

The State University of New York
2013 Undergraduate International
Student Prospectus

DISCOVER More.



SUNY

Table of Contents

CAMPUS TYPES 3

University Centers and
Doctoral Degree Granting Institutions

University Colleges

Technology Colleges

Community Colleges

CAMPUS PAGES

University Centers and
Doctoral Degree Granting Institutions

Albany 4

Binghamton 4

Environmental Science
and Forestry (ESF) 5

University Colleges

Brockport 5

Buffalo (College) 5

Cortland 6

Fredonia 6

Geneseo 6

New Paltz 7

Old Westbury 7

Oneonta 7

Oswego 8

Plattsburgh 8

Potsdam 8

Purchase 9

Technology Colleges

Alfred State 9

Canton 9

Cobleskill 10

Delhi 10

Farmingdale State 10

Morrisville State 11

SUNYIT 11

Community Colleges

Broome 11

Clinton 12

Erie 12

Fulton-Montgomery 12

Herkimer County 13

Jamestown 13

Mohawk Valley 13

Monroe 14

Nassau 14

North Country 14

Rockland 15

Sullivan County 15

Westchester 15

SUNY Korea 16

Academic Program Information 16

Bachelor's Degree Programs
(Four-year) 17-22

Associate Degree Programs
(Two-year) 23-25

Certificate Programs
(One-year) 26

Frequently Asked Questions 27

Admissions Requirements/
Studying English at SUNY 28-29

Ready to Apply? 30

SUNY Authorized Recruitment
Representatives 31

Tuition, Fees and Other Costs 32

International Student Services 33

List of Campus Web Sites 34

What Others Say About SUNY 35-36

Map with Participating Campus
Locations INSIDE BACK COVER

SUNY Quick Facts

Total SUNY Enrollment
468,000

Undergraduate Enrollment
427,000

International Students
23,000

Total Alumni (estimated)
2,739,000

SUNY Faculty
33,400

**Countries Represented
on SUNY campuses**
160

**Top Five Countries of
Origin for International
SUNY Students**

South Korea

China

Singapore

Canada

India



Discover More.

Find out more about SUNY campuses at
www.suny.edu/student

Discover Opportunity. Discover Success. Discover SUNY.



The State University of New York . . .

- is the largest comprehensive university system in the world.
- offers a wide variety of programs.
- has extensive opportunities for YOUR study program.
- offers *assured admission* at one of SUNY's campuses.

Experience **NY**
Experience **SUNY**

- › SUNY's extensive depth and breadth of programs allows you to customize your studies.
- › Fulbright scholars, Pulitzer Prize winners, and Nobel Prize recipients are among the many SUNY academics who will teach and mentor you in the classroom.
- › You can find a perfect fit, whether you prefer urban living or the adventures and lifestyle of a smaller rural setting.
- › SUNY attracts students from more than 160 countries around the world so that you will meet and interact with other international students as well as American students.
- › You will have on-campus accommodation options ranging from suite-style to traditional shared rooms.
- › SUNY tuition fees are very affordable compared to other U.S. universities and colleges, and comparable to fees in the UK, Australia, and Canada.
- › SUNY has an extensive network of recruitment partners worldwide to assist with your questions.
- › Find out more at www.suny.edu.



Discover New York. Discover SUNY.



Across New York State, you will find great places to live and learn. SUNY colleges and universities are spread across New York State, among beautiful mountains, world-class beaches, quaint rural villages and America's most vibrant and well-known cities.

Each region of New York State offers unparalleled attractions, ranging from 16 state parks, 35 historic sites and 76 beaches to 8,355 campsites, 18 nature centers and 1,350 miles of trails. Students from all 50 states and 160 nations are drawn to SUNY's universities, colleges, and two-year schools.

New York State is SUNY's campus. You'll find the best of everything, from art museums, buffalo wings, culture and natural wonders to sports teams, state and national parks and theatre. What will you love about New York? Check out <http://www.iloveny.com/> to learn more.



Why did you choose to study in the United States?

"I wanted to be exposed to a different environment and to be exposed to different cultures. I also wanted to see different seasons."

*Kiryl Montano
Trinidad and Tobago*

Find out more about SUNY campuses at www.suny.edu/student

University Centers and Doctoral Degree Granting Institutions



Albany
Binghamton
Environmental
Science and Forestry

Types of degree programs:

- › Bachelor
- › Master
- › Doctoral
- › A few other undergraduate and graduate level options

Students per campus:

1,000-19,000

About the University Centers:

- › Teaching, research and advanced graduate/professional studies are top priorities
- › Admission with Grade Point Average (GPA) above 3.0
- › Undergraduate honors programs
- › Research institutions with a broad range of academic programs
- › Renowned faculty (nationally and internationally)
- › Typically located in or near a larger city

A good option for students who:

- › Have a strong academic record
- › Are looking for a variety of graduate level options
- › Prioritize theoretical learning over practical learning
- › Prefer to study at a larger institution

Offering every level of study and research.

University Colleges



Brockport
Buffalo State
Cortland
Fredonia
Geneseo
New Paltz
Old Westbury
Oneonta
Oswego
Plattsburgh
Potsdam
Purchase

Nationally recognized undergraduate degree programs.

Types of degree programs:

- › Bachelor
- › (Some) Master
- › (Some) Research
- › A few other undergraduate level options

Students per campus:

3,700-9,000

About the University Colleges:

- › Student success is a top priority for the university colleges
- › Undergraduate honors programs
- › Mostly located in small cities and towns
- › Wide variety of programs within liberal arts, sciences and professional disciplines

A good option for students who:

- › Are looking for a variety of undergraduate options
- › Prioritize theoretical learning over practical learning
- › Enjoy learning in a smaller community with other full-time students
- › Prefer to study at a smaller to mid-size institution

Technology Colleges



Alfred State
Canton
Cobleskill
Delhi
Farmingdale State
Morrisville State
SUNYIT

Types of degree programs:

- › Associate and Bachelor
- › (Some) Master

Students per campus:

1,600-6,000

About the Technology Colleges:

- › Hands-on learning and practical experience is a top priority
- › Strong focus on preparing students for employment
- › State-of-the-art facilities and cutting-edge technology
- › Offer studies at undergraduate level, and a few options at graduate level
- › Technical studies, engineering, computer science, business, hospitality management

A good option for students who:

- › Are looking for a variety of undergraduate options
- › Have a strong interest in the technical disciplines
- › Prioritize practical learning over theoretical learning
- › Enjoy learning in a smaller community with other full-time students
- › Prefer to study at a smaller institution

A range of disciplines. Extraordinary possibilities.

Community Colleges



Broome
Clinton
Erie
Fulton-Montgomery
Herkimer County
Jamestown
Mohawk Valley
Monroe
Nassau
North Country
Rockland
Sullivan County
Westchester

A quality start on a successful future.

Types of degree programs:

- › Associate
- › Diploma
- › Certificate (undergraduate programs lasting up to two years)

Students in total:

246,000 Community College students in the SUNY system

About the Community Colleges:

- › Tuition fees are significantly lower than other SUNY options
- › Small class sizes and a broad range of academic subjects
- › Excellent options for transferring to any type of institution
- › Credits are accepted by SUNY schools and private institutions
- › Technical studies, engineering, computer science, business, hospitality management

A good option for students who:

- › Would like to receive additional academic support
- › Are looking for a 1- or 2-year undergraduate program
- › Are conscious of tuition costs
- › Prioritizes both practical and theoretical learning
- › Prefer to study at a smaller institution

University at Albany



1400 Washington Avenue
Albany, NY 12222
518.442.5435
ugadmissions@albany.edu

POPULAR MAJORS

Biology, Business/Accounting, Computer Science, Communication, Criminal Justice, Economics, English, History, Journalism, Political Science, Psychology

UNIQUE PROGRAMS

Actuarial Science, Atmospheric Science, East Asian Studies, Financial Market Regulation, Honors College, Nanoscale Science and Engineering, NYS Writers Institute, Public Health, The RNA Institute

Undergraduates 12,779
Student Faculty Ratio 18 to 1



An Excellent Education. A Great Value. Named one of the "100 best values" by *Kiplinger's Personal Finance*, the University at Albany offers students the resources of an internationally recognized public research university. Students benefit from the strength and rich diversity of UAlbany's nine schools and colleges.

Building a Strong Foundation. Outstanding faculty, an innovative curriculum, and exceptional facilities provide students with a strong foundation for academic and career success. More than two-thirds of graduates go on for advanced degrees and acceptances to law and medical schools are above the national average.

Students choose from 50 majors in the arts and sciences, business and accounting, public policy, criminal justice, information science, pre-law and pre-health. Extensive internship opportunities offer real-world experience in New York's Capital Region.

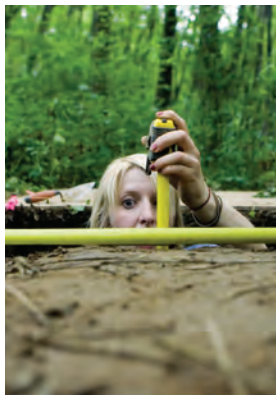
UAlbany is one of only six colleges and universities in New York with AACSB dual accreditation in business administration and accounting.

The University's College of Nanoscale Science and Engineering is the first college in the world devoted exclusively to the study of nanotechnology and microtechnology. The \$14 billion complex attracts corporate partners from around the world.

One Great City. One Great University. The UAlbany campus is bustling with extracurricular opportunities including over 200 clubs, honor societies, and other campus organizations. UAlbany is a short drive from spectacular natural and recreational centers in New York, Massachusetts and Vermont. And with 20 colleges in the Capital Region, it's easy to see why Albany is "a great college town."

Learn more at www.albany.edu

Binghamton University



P.O. Box 6001
Binghamton, NY 13902-6001
607.777.2171
international@binghamton.edu

POPULAR MAJORS

Biology, Business, Computer Science, Engineering, Psychology

WHAT'S NEW?

Recreation Center, Fitness Center, Engineering and Science Buildings, New Student Housing with Dining Hall and meeting space, President Scholars

Undergraduates 11,861



Fiske Guide recognizes Binghamton as "the premier public university in the northeast;" *Kiplinger's Personal Finance* has ranked it as the "#1 best value in the nation;" *U.S. News & World Report* cites Binghamton as one of the "nation's top 50 public universities;" and *Greenes' Guide* named Binghamton a "public Ivy."

Located in upstate New York State, Binghamton is ranked as the 8th safest mid-size city in the U.S. (*Farmers Insurance Group*). Binghamton is just three hours from New York City and Philadelphia; and five hours from Washington DC, Boston, and Niagara Falls.

Binghamton is a mid-sized university made up of six schools, the largest of which is Harpur College of Arts and Sciences. Binghamton offers more than 130 academic offerings and resources for optimal research opportunities. Students collaborate with distinguished faculty, learn from a diverse student body and choose from more than 500 study abroad programs. Ninety-one percent of freshmen return for their sophomore year, well above the national average of 67 percent. Binghamton is a great school for active students who want to be part of an outstanding academic program, be engaged in and outside the classroom, and get involved with their campus and local community.

Binghamton has over 2200 international students from over 100 countries. In addition, there are over 250 clubs and organizations and 21 NCAA Division I varsity teams.

Graduates are successful, whether attending top graduate schools or entering the workforce. In fact, Binghamton alumni earn some of the top-starting salaries in the nation (*Forbes*).

Learn more at www.admissions.binghamton.edu

College of Environmental Science and Forestry



1 Forestry Drive
Syracuse, NY 13210
315.470.6600
esfinfo@esf.edu

POPULAR MAJORS

Environmental Engineering,
Environmental Science,
Natural Resources, Landscape
Architecture, Wildlife Science

UNIQUE PROGRAMS

Aquatic Science, Bioprocess
Engineering, Construction
Management, Renewable
Energy, Environmental Policy

Undergraduates 1,600
Student Faculty Ratio 12 to 1

The College of Environmental Science & Forestry (ESF) is the premier college in the nation focused on the science, design, engineering and management of natural resources and the environment. ESF offers 22 undergraduate and 30 graduate degree programs, and is consistently ranked among the nation's top universities based on value, class size and student engagement. ESF faculty come from impressive backgrounds and conduct research that is at the forefront of solving many of the world's environmental problems, including renewable energy sources.

Students study at the Syracuse campus and on 25,000 acres of property throughout New York State. ESF also offers numerous opportunities to study abroad. Career-related internships provide invaluable work experience and can often pave the way to permanent positions after graduation. ESF's special relationship with neighboring Syracuse University (SU) provides ESF students with many of the same privileges as SU students.

Learn more at
www.esf.edu



The College at Brockport



350 New Campus Drive
Brockport, NY 14420
585.395.2751
applyint@brockport.edu

POPULAR MAJORS

Business Administration,
Physical Education, Health
Science, Nursing, Criminal
Justice, Psychology,
English, History

WHAT'S NEW?

Special Events and
Recreation Center

Undergraduates 7,166
Student Faculty Ratio 17 to 1

At The College at Brockport, we've spent more than 175 years helping our students unlock their intellectual, physical and creative gifts by fostering innovative thinking and leadership. It's our College promise.

Our rigorous programs in such areas as the sciences, mathematics, kinesiology, business and dance are complemented by a rich array of professional programs and innovative graduate degrees. Our faculty are mentors and educators who work side-by-side with students as they conduct research and participate in experiential learning such as study abroad, internships and fellowships.

The campus is located in the historic Village of Brockport, 16 miles west of Rochester, NY. Students enjoy a small college-town atmosphere and easy access to Rochester's culture, shopping, professional sports and parks.

Schedule a personal visit to our campus at www.brockport.edu/admissions/visit/index.html.

Learn more at
www.brockport.edu

Buffalo State College



1300 Elmwood Avenue
Buffalo, NY 14222
716.878.4017
admissions@
buffalostate.edu

POPULAR MAJORS

Business, Communication, Criminal
Justice, Education, Psychology

UNIQUE PROGRAMS

Communication Design, Fashion/
Textile, Fibers, Forensic Chemistry,
Metals/Jewelry, TV & Film Arts,
Urban/Regional Planning,
Wood/Furniture

Undergraduates 10,002
Student Faculty Ratio 16 to 1

Each year, nearly 12,000 students choose Buffalo State for its broad array of high-quality and distinctive academic programs, diverse and creative environment, hands-on learning opportunities, affordable SUNY tuition, and location in the heart of Buffalo's cultural corridor.

Buffalo State offers more than 160 undergraduate programs, with courses taught by nationally renowned scholars who bring the latest research into the classroom.

Students participate in faculty-mentored research, prestigious internships, and international study opportunities. High-achieving students are invited to join our All College Honors Program.

Buffalo State hosts a championship-caliber NCAA Division III athletic program and our state-of-the-art fitness center and ice arena are open for general student use.

The campus adjoins Delaware Park, the museum district, and the chic Elmwood Village neighborhood. Plan your visit today.

Learn more at www.buffalostate.edu

SUNY Cortland



P.O. Box 2000
Cortland, NY 13045
607.753.4711
admissions@cortland.edu

POPULAR MAJORS

Athletic Training, Business Economics, Communications, Community Health, Engineering (3+2 Program), English as a Second Language (Teaching), Exercise Science, Geographic Information Systems, International Studies, Recreation, Sport Management

UNIQUE PROGRAMS

Archaeology, BFA Fine Arts, International Studies, New Media Design, Professional Writing, Recreation

Undergraduates 6,310
Graduates 1,048
Student Faculty Ratio 19 to 1

Our residential campus, located in a small Central New York city, is surrounded by rolling hills, beautiful lakes and ski areas. The location offers easy access to many major cities in the northeast United States that offer international students the opportunity to expand their cultural experience.

The 64 majors and 38 minors allow students the ability to apply knowledge and explore career choices. Students discover a tradition of academic excellence, hands-on learning and personal guidance in small classroom settings. Internships, volunteerism, and research collaborations are just some examples of additional opportunities students have to build professional skills.

Outside of the classroom, students can participate in over 100 clubs and organizations covering a variety of interests. Our 25 NCAA Division III athletic teams rank among the best in the nation and first in NY State. The first-rate campus stadium complex and other athletic facilities support these student activities and are used by the NY Jets (National American Football League) when we host their summer training camp.

Learn more at www.cortland.edu

SUNY Fredonia



178 Central Avenue
Fredonia, NY 14063
716.673.3251
800.252.1212
admissions@fredonia.edu

WHAT'S NEW?

Majors in Journalism and Sport Management, The SUNY Fredonia Technology Incubator, A College of Visual and Performing Arts (in 2013), A \$60 million new Science Center (in 2014)

UNIQUE PROGRAMS

Concentrations in Environmental Science and Music Industry, Visual Arts & New Media, Early Childhood/ Childhood Education (Dual Certification), Communication Disorders

Undergraduates 5,398
Student Faculty Ratio 16 to 1

SUNY Fredonia's commitment to the liberal arts, ideal class sizes, exceptional faculty-student interaction and overall affordability have all led to its consistent rankings by publications like *U.S. News & World Report* and *Kiplinger's Personal Finance* magazine as being among the best public universities—and best values—in the nation. Plus, with roughly 40,000 alumni located across the globe, a Fredonia degree affords a host of connections and opportunities to launch virtually any career.

Fredonia offers students over 110 degree programs, talented faculty from around the world, tremendous value, and an unwavering focus on providing a complete collegiate experience.

We are committed to attracting a diverse and accomplished student body, and offer Division III athletics, dozens of internships and study abroad programs, and more than 130 student groups.

Fredonia is less than one hour from the Buffalo-Niagara region and three hours from Cleveland, Pittsburgh, Toronto and Rochester.

Learn more at www.fredonia.edu

SUNY Geneseo



1 College Circle
Geneseo, NY 14454
585.245.5404
866.245.5211
iss@geneseo.edu

POPULAR MAJORS

Biology, Business, International Relations, Psychology

WHAT'S NEW?

3+3 Doctor of Physical Therapy with Upstate Medical University, 3+2 Cooperative Engineering with Columbia University, Early Admission to Upstate Medical University, MS Accounting

Undergraduates 4,900
Student Faculty Ratio 19 to 1

Geneseo is a highly selective, residential liberal arts college located in one of the most beautiful towns in upstate New York.

The college attracts some of the most talented students from New York and overseas and is widely regarded as a public counterpart to the small, selective, private liberal arts college.

Students consider Geneseo along with such competitors as Colgate, Hamilton, Vassar, Rochester and Cornell, because they understand that we offer everything you would expect at a first-rate liberal arts college—at a fraction of the price.

The results, to date, have been impressive. Our students win major national fellowships, compete successfully for admission to the best graduate and professional schools in the nation, and obtain prestigious internships at companies such as Price Waterhouse Coopers, KPMG, and Goldman Sachs.

Visit us on the web. See for yourself what makes our community so special.

Learn more at www.geneseo.edu

SUNY New Paltz



100 Hawk Drive
New Paltz, NY 12561-2499
845.257.3200
admissions@newpaltz.edu

POPULAR MAJORS

Business, Education,
Communications/Journalism,
Fine & Performing Arts,
English, Biology

UNIQUE PROGRAMS

BS-Environmental
Geochemical Science,
BS-Computer/Electrical
Engineering, 7-Year Medical
Program

Undergraduates 6,814
Student Faculty Ratio 16 to 1

SUNY New Paltz is located in a dynamic college town just 90 minutes from New York City. It is a selective, comprehensive university with bachelor's and master's degrees in subjects of primary interest to international students, and with a 257-acre campus, located in the stunning Hudson River Valley, it offers an outstanding quality of life and also world-class connections. SUNY New Paltz is #14 best value nationwide for non-citizens according to *Kiplinger's Personal Finance*.

Founded in 1828, New Paltz's heritage is rooted in an intense spirit of imaginative inquiry. We provide an open, diverse, and artistic place of higher learning and are committed to preparing our students to excel in the rapidly changing world. The college offers an Intensive English Language program which prepares students for success in academic programs.

Housing is guaranteed for undergraduate students, and we offer a number of cultural activities and field trips for international students to enrich the American experience. Recent field trips included New York City, Boston and Washington D.C.

Learn more at
www.newpaltz.edu

Old Westbury



Campus Center, Box 307
Old Westbury, NY 11568
516.876.3073
enroll@oldwestbury.edu

POPULAR MAJORS

Psychology, Accounting,
Biology, Education, Business,
Media & Communications

UNIQUE PROGRAMS

First Year Ethics/Engagement
Program with Community
Service, 7-year Medical
Program, Neuroscience
Research, 15 graduate
programs

Undergraduates 4,400
Student Faculty Ratio 17 to 1

Thought-provoking academics and an engaging campus community are all characteristics of an Old Westbury education. Since its founding, Old Westbury has sought to provide students with the skills needed to succeed in their chosen field while also instilling in them an understanding of the changing global community in which they will live and work.

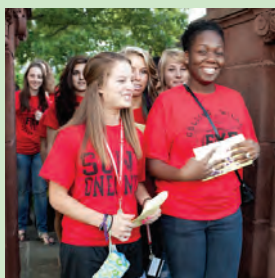
Through small classes and a tradition of interpersonal education, every student has the opportunity to learn from professors who lead both in research and practical experience.

Located just 22 miles from New York City, Old Westbury lies on a 604-acre campus where students can experience a lovely park-like setting.

Our students participate in over 50 student organizations and many compete in one or more of our 12 Division III athletic teams. And, they learn as part of one of the most diverse student populations in the nation, experiencing opinions and insight both from around the corner and around the world.

Learn more at
www.oldwestbury.edu

College at Oneonta



Office of International
Education
111 Schumacher Hall
Oneonta, NY 13820
607.436.3369
admissions@oneonta.edu

POPULAR MAJORS

Education, Fashion, Business,
Biology, Music Industry,
Communication Studies,
Psychology, Dietetics

WHAT'S NEW?

New International Development
Studies major, Division of Business
and Economics is now AACSB
accredited, all FYE residence halls
have been renovated

Undergraduates 5,822
Student Faculty Ratio 17 to 1

SUNY Oneonta offers students a variety of liberal arts & sciences majors, pre-professional and teacher preparation programs. Oneonta is known for outstanding faculty, students committed to both academic achievement and community service, and exceptional facilities.

Highly regarded for taking a genuine interest in students' success, Oneonta's faculty includes 109 recipients of SUNY's Chancellor's Awards for Excellence and Distinguished Professors. The College emphasizes hands-on experience through diverse learning opportunities such as internships, student faculty research and service learning.

Oneonta's many co-curricular activities contribute to students' growth as individuals. In addition to 100+ clubs and organizations, the College offers leadership programs, grant programs that support students' research and travel, 21 intercollegiate athletic teams, entertaining and educational campus events, and extensive volunteer opportunities.

Learn more at www.oneonta.edu



SUNY Oswego



International Student
and Scholar Services
102 Sheldon Hall
Oswego, NY 13126
315.312.5775
intled@oswego.edu

POPULAR MAJORS

Accounting, Business Administration, Biological Sciences, Broadcasting, Chemistry, Communication Studies, Computer Science, Economics, Education, Finance, Global and International Studies, Graphic Design, Human Computer Interaction, Human Resource Management, International Language and Trade, Journalism, Marketing, MBA, Psychology, Risk Management and Insurance, Zoology

WHAT'S NEW?

Over \$800 million in recent construction, includes \$118 million science and engineering complex opening in 2013

Undergraduates 7,150
Student Faculty Ratio 18 to 1

Oswego's 696-acre lakeside campus is located in the city of Oswego, 35 miles northwest of Syracuse.

Known for its incredible natural beauty and spectacular sunsets, the campus is now experiencing a facilities renaissance with nearly \$800 million being invested in campus development.

Oswego offers an exceptionally diverse curriculum with 110 academic programs offered through four distinct schools: Business, Education, Liberal Arts & Sciences and Communication, Media & the Arts.

Our nationally recognized programs for first-year students, options for service learning, internships, study abroad, extensive athletic opportunities, and over 150 clubs and organizations make Oswego an outstanding college choice.

Oswego's reputation stretches far and wide. The college is top-ranked by *U.S. News & World Report* and the Princeton Review. Recently Oswego was named among the top 150 "best value" colleges and universities by *USA Today* and the Princeton Review.

Learn more at www.oswego.edu/iss

SUNY Plattsburgh



101 Broad Street
Plattsburgh, NY 12901
518.564.2040
888.673.0012
admissions@
plattsburgh.edu

POPULAR MAJORS

Art, Biology, Business, Criminal Justice, Education, Journalism, Nursing, Psychology

WHAT'S NEW?

\$12 million facility for business and computer science, 30,000 sq. ft of new science labs, \$40 million dorm renovation project

Undergraduates 5,822
Student Faculty Ratio 17 to 1

SUNY Plattsburgh is a small, public institution in northern New York. We provide undergraduate students a well-rounded education in a collaborative environment that prepares them for the real world. The College's commitment to academic excellence is evident in its diverse academic programs, distinguished faculty, cutting-edge research, and plentiful internships. Imagine what you will accomplish!

SUNY Plattsburgh offers bachelor's degrees in over 60 academic majors. Most international students are enrolled in one (or more) of the 11 programs offered in the internationally accredited School of Business and Economics. Programs in biology, biochemistry, and chemistry are very popular.

SUNY Plattsburgh ranked #1 in the U.S. and #2 in the world for overall satisfaction on the 2011 International Student Barometer, the world's largest international student satisfaction survey. The college enrolls nearly 350 international students from over 60 countries, making it one of the most globally diverse colleges in the SUNY system. Our supportive staff will welcome you to our home-away-from-home environment.

Learn more at www.plattsburgh.edu/admissions

SUNY Potsdam



44 Pierrepont Avenue
Potsdam, NY 13676
315.267.2180
admissions@potsdam.edu

POPULAR MAJORS

Business Administration, Computer & Information Sciences, Economics, Fine Arts, Music School, Sciences (Biology, Biochemistry, Chemistry, Physics, Geology), Teacher Education

WHAT'S NEW?

Environmental Studies, BS degrees in Biology and Chemistry, BS Geology, 3 Year Programs, ESL Pathway Program with conditional admission

Undergraduates 3,988
Student Faculty Ratio 15 to 1

SUNY Potsdam is a place where students can explore new ideas and experiences. If you're looking for an exceptional education and a challenging academic experience, you'll find it at SUNY Potsdam.

Our professors are dedicated to teaching. You'll never have a course taught by a graduate student. SUNY Potsdam is also committed to ensuring that our students succeed in our rigorous academic environment. The Freshman Year Experience, Freshman Success Seminar, and Freshman Interest Groups are all strongly recommended for new students to assist with the transition from high school to college, maximizing your potential for success.

SUNY Potsdam annually awards over \$500,000 in scholarships to academically talented new students to reward them for their success in high school.

Outstanding students become prominent alumni. More than 95% of our graduates gain employment in their field of choice or enter graduate school to pursue an advanced degree.

Learn more at www.potsdam.edu

Purchase College



735 Anderson Hill Road
Purchase, NY 10577
914.251.6300
admissions@purchase.edu

HALLMARK PROGRAMS

Music, Arts Management,
Theatre Design, New Media,
Biology/Pre-Med

WHAT'S NEW?

Playwriting & Screenwriting
(BA), Theatre & Performance
(BA), \$500,000 five-year
STEM scholarship grant,
Digital Media Zone, Writers
Center

Undergraduates 4,175
Student Faculty Ratio 16 to 1

Students from all over the world discovered that Purchase College is one of the most distinctive public colleges—not only in the SUNY system but beyond. We offer programs in the liberal arts, visual arts, performing arts, film and media studies.

Our core belief, “Think Wide Open”, expresses our commitment to offering a personalized learning environment that allows students to tailor their academic experience to match their passions and goals. We foster intellectual curiosity and innovation amid respect for individuality and diversity.

Our closeness to New York City provides exceptional educational and social options. On campus, students can attend world-class performances at the Performing Arts Center, notable exhibitions at the Neuberger Museum of Art, NCAA Division III sports, lectures, films, clubs and organizations.

Each year, we enroll students from over 25 countries who pursue programs including Dance, Music, Art, Biology, Chemistry and Math/Computer Science.

Learn more at
www.purchase.edu or
www.admissions.blogs.purchase.edu

Alfred State



10 Upper College Drive
Alfred, NY 14802
607.587.4215
800.4ALFRED
admissions@alfredstate.edu

UNIQUE PROGRAMS

Building Construction (AOS),
Financial Planning, Forensic
Science Technology,
Information Security &
Assurance

WHAT'S NEW?

Architecture, new facilities
include a Student Leadership
Center (opening fall 2013),
Physical & Health Sciences
Building, Center for Organic
and Sustainable Agriculture,
Veterinary Technology Center

Undergraduates 3,700
Student Faculty Ratio 20 to 1

Ranked in the Top 25 Regional Colleges in the North by *U.S. News and World Report* (2012), Alfred State graduates are prepared to hit the ground running. Ninety-nine percent of graduates transfer to higher education institutions or gain employment. Choose from over 70 majors in agriculture, allied health, applied technology, architecture and engineering technology, business, and liberal arts and sciences at the baccalaureate, associate, and certificate levels.

You'll study in small classes in state-of-the-art labs and facilities. You'll work on real-world projects and learn how to think, not what to think, through a focus on project-based learning. Outside the classroom, choose from a variety of lifestyle options available in our 13 residence halls. Join one of over 90 clubs and organizations or compete on one of our 18 intercollegiate sports teams.

Outstanding academic programs, personalized attention, industry-standard equipment, and a well-rounded campus life experience with a focus on student leadership and civic engagement give Alfred State students the advantage they need for success!

Learn more at
www.alfredstate.edu

SUNY Canton



34 Cornell Drive
French Hall
Canton, NY 13617
315.386.7123
800.388.7123
admissions@canton.edu

POPULAR MAJORS

Business Administration,
Engineering, Finance, Information
Technology, Accounting

WHAT'S NEW?

Applied Psychology, Homeland
Security, Sports Management,
Health & Fitness Promotion,
Roos House Athletic Center,
Grasse River Suites-apartment-
style residence hall

Undergraduates 3,900
Student Faculty Ratio 21 to 1

A modern and scenic 555-acre campus on a wooded hillside overlooking the Grasse River provides SUNY Canton students the perfect environment for pursuing a top-notch education, rich in technology and applied learning. Miles of beautiful trails circle the campus, with wonderful scenic landscapes. The College is close to the Adirondack Mountains, the St. Lawrence River, and major cities, including Ottawa and Montreal.

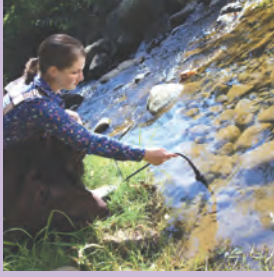
SUNY Canton is Northern New York's four- and two-year College for technology, health, management and public service. SUNY Canton offers over 20 majors leading to bachelor's degrees, 21 programs leading to associate degrees, and several one-year certificate programs. The College works with SUNYIT to offer students three master degree programs.

Most of the College's highly-qualified faculty members are current practitioners in their professions with outstanding academic credentials and sound technical experience.

Many of SUNY Canton's majors are available in class, online, or both. Students can learn in a flexible and convenient self-paced environment while taking courses that will lead directly to a career.

Learn more at www.canton.edu

SUNY Cobleskill



106 Suffolk Circle
Knapp Hall
Cobleskill, NY 12043
518.255.5525
800.295.8988
admissions@cobleskill.edu

WHAT'S NEW?

Applied Psychology (BS)
Environmental and Energy
Technologies (BT)

NOTABLE ALUMNI

Craig Currier '93, Superintendent,
Glen Oaks Golf Club, Old Westbury,
NY; Perry Odak '65, President,
Devonshire Investors/Fidelity
Investments; Michael Ty '73,
President, American Culinary
Federation; Jessica Ziehm '93,
Director of Communications, New
York State Ag & Markets; Ilianna
Armata of Athens, Greece, recipient
of the 2012 Chancellor's Award for
Student Excellence

Undergraduates 2,600
Student Faculty Ratio 21 to 1

The State University of New York at Cobleskill is a residential college with programs in a wide range of technology fields. The College offers 53 bachelor's and associate degree programs in agriculture and natural resources, liberal arts and sciences, and business. SUNY Cobleskill places an emphasis on integrating classroom instruction with strong internships and field experiences. The College has nationally recognized programs and faculty who engage in scholarship, often in collaboration with students. In this way, real life and real learning are central to a Cobleskill education. For all programs, individual attention to student success is the highest priority of SUNY Cobleskill's expert faculty and staff.

SUNY Cobleskill is committed to providing small classes, excellent facilities, and a hands-on learning environment. Whether students plan to further their education or begin their professional careers, they graduate with the foundation to pursue their goals—and to succeed. The College is ranked among the Best Regional Colleges in the North by *U.S. News and World Report* and listed among *The Princeton Review's* 286 Greenest Colleges.

Learn more at www.cobleskill.edu

SUNY Delhi



2 Main Street
Delhi, NY 13753
607.746.4550
800.96DELHI
enroll@delhi.edu

Celebrating 100 years of academic excellence, SUNY Delhi is a student-centered campus providing experiential learning in a small town setting. The college attracts more than 3,500 students from across the United States and the world!

Hands-on training is the cornerstone of Delhi's academic programs. The college offers over 60 majors leading to associate and bachelor's degrees. Unique programs in the fields of golf, recreation, hospitality, criminal justice, turf management, and construction are just a sample of the exciting majors available.

Delhi's programs feature on-the-job training both on campus and via internships, with over 95 percent of Delhi students finding jobs or continuing their education within one year of graduation.

In addition, SUNY Delhi keeps students active by offering over 40 clubs, Greek life, and intramural sports. Our NJCAA Division III athletic teams have been champions at the conference, regional and national levels.

Learn more at
www.delhi.edu

POPULAR MAJORS

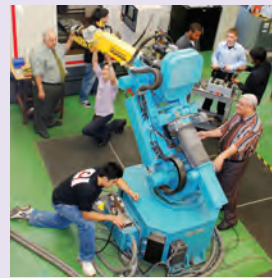
Veterinary Technology,
Architectural Technology,
Culinary Arts, Hotel & Resort
Management, Construction,
Business and Technology
Management

UNIQUE PROGRAMS

Adventure Recreation,
Business and Professional
Golf Management

Undergraduates 3,500
Student Faculty Ratio 20 to 1

Farmingdale State College



12350 Broadhollow Road
Laffin Hall, 2nd Floor
Farmingdale, NY 11735
631.420.2200
admissions@
farmingdale.edu

At Farmingdale, you will enjoy small personalized classes and hands on internships that prepare you for a successful career. Through the use of real-world technologies including our Solar Energy Center and Institute for Research & Technology Transfer, students have the opportunity to conduct research in the field of alternative energy. Whether it's working alongside award-winning faculty in a research laboratory or applying skills learned in your internship, Farmingdale is a place where knowledge is a path to achievement and discovery.

Our 380-acre technology enhanced campus is accessible to New York City in 45 minutes via mass transit. It has been named one of the best colleges in the North in *U.S. News and World Report* 2011 rankings. It is among the top 150 public colleges in the nation in the earning power of graduates, and has been ranked second-safest campus in the U.S. in a nationwide statistical analysis.

Farmingdale State College has a diverse student body, including 150 international students from 15 countries.

POPULAR MAJORS

Architectural, Electrical and
Mechanical Engineering
Technology, Bioscience,
Business Management,
Computer Programming and
Information Systems, Visual
Communication-Graphic Design

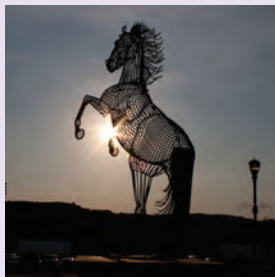
WHAT'S NEW?

Telecommunications and
Software Technology, 18 new
minors, new outdoor track,
renovated classrooms and
residence halls, \$25M campus
center, sustainable garden

Undergraduates 7,600
Student Faculty Ratio 20 to 1

Learn more at
www.farmingdale.edu

Morrisville State College



Eaton Street
P.O. Box 901
Morrisville, NY 13408
315.684.6046
admissions@morrisville.edu

POPULAR MAJORS

Agricultural Business, Information Technology, Auto & Diesel Technology, Criminal Justice, Business, Nursing, Renewable Energy

WHAT'S NEW?

Stadium, design studio, two apartment-style dorms, wellness center, equine rehabilitation center

Undergraduates 3,230
Student Faculty Ratio 14 to 1

Morrisville State College is changing the face of the four-year degree institution with unprecedented advances in higher education.

An action-oriented, interactive learning lab, Morrisville is a national leader in technology—integrating it into all aspects of campus life. From being the first to implement a completely wireless campus to our newest transformation of a historic barn into a 25,000 square-foot architecture design center, Morrisville State College is moving toward providing a better future for its students.

With more than 80 bachelor's and associate degrees and literally hundreds of student-run campus activities a year, it's hard not to find something that interests students as well as the faculty.

Boasting 15 intercollegiate athletic teams and dozens of intramural athletics, Morrisville provides students with a balanced, total college experience.

Learn more at
www.morrisville.edu

SUNYIT



100 Seymour Road
Utica, NY 13502
(011) 315-792-7219
international@sunyit.edu

POPULAR MAJORS

Engineering, Biology, Math, Business, Nursing, Computer Sciences, Engineering Technology

WHAT'S NEW?

\$13M student center, \$20M field house, \$23M residence hall, \$27M advanced technology center

Undergraduates 2,200
Student Faculty Ratio 19 to 1

SUNYIT is New York State's only public institute of technology. SUNYIT's specialty is excellence in technology: engineering, computer science, and cyber-security; excellence in professional studies: business and nursing; and more.

Located near Utica, NY, population 60,000, where visitors can arrive by air, train, bus, or car. SUNYIT, with \$225 million in building projects, has a brand new, modern campus, that has welcomed students from over 20 countries worldwide.

SUNYIT students enjoy personal faculty attention and campus life in top-rated housing complexes that offer the privacy and convenience of apartments, in a townhouse style. Oriskany Hall houses first year students, providing high-tech amenities in a living-learning environment.

SUNYIT has high CPT (95%) and OPT (98%) placement rates for its international students who enjoy close cooperation with industry. Over 22,000 alumni pursue successful careers in a variety of fields.

Learn more at
www.sunyit.edu/
international_admissions

Broome Community College



Box 1017
Binghamton, NY 13902
607.778.5001
admissions@sunybroome.edu

POPULAR MAJORS

Liberal Arts, Communications and Media Arts, Criminal Justice, International Business, Business Administration, Computer Science, Engineering Science, Management, Computer Security & Forensics, Music Sound Engineering, Homeland Security

WHAT'S NEW?

Green building for engineering and science, windmill, solar panels

Undergraduates 6,900
Student Faculty Ratio 18 to 1

International students choose BCC for many reasons, but choices in academics, transferability, supportive faculty, successful approachable staff, and affordability are the top reasons on their list!

We have welcomed students of all ages from around the world. You will receive guidance and assistance throughout your entire stay at the college.

If you're undecided on an academic major, we have services to assist students in finding the right fit!

Student activities include student assembly, International student organization, service organizations and theatre groups, as well as an excellent athletic program, with 13 men's and women's varsity teams and extensive athletic facilities including a full-service ice center.

Our programs of study are designed to help you meet your goals for the future from career to transfer. We have professors who are experts in their fields, state-of-the-art facilities, and opportunities to make life-long friendships. We invite you to explore BCC!

Learn more at **www.sunybroome.edu**

Clinton Community College



136 Clinton Point Drive
Plattsburgh, NY 12901
518.562.4170
800.552.1160
admissions@clinton.edu

WHAT'S NEW?

Renewable Energy Technologies,
Sports Management 2+2 with
SUNY Canton

UNIQUE PROGRAM

Leadership Education and
Development (LEAD) explores
leadership through workshops
aimed at skill development. LEAD
is open to all students.

Undergraduates 2,400
Student Faculty Ratio 18 to 1

Clinton Community College is located on a scenic bluff overlooking beautiful Lake Champlain. Students enjoy spectacular views of the lake, Vermont to the east and panoramic views of the Adirondack mountains to the west.

Our campus boasts both historical significance and state-of-the-art computers and technology. Our award-winning Student Affairs program offers students the opportunity to live on campus with two residence halls and a dining complex, and to develop leadership skills through student government, athletics, clubs and the Phi Theta Kappa honor society. We also offer beginner level ESL courses for international students.

The College is located one hour from Montreal, Canada, 45 minutes from Burlington, Vermont and two and one-half hours from Albany, New York. In winter, Clinton students also enjoy the outdoors, with Lake Placid and Whiteface Mountain less than one hour from campus.

Clinton Community College offers both career and transfer degrees designed to help students achieve their goals.

Learn more at www.clinton.edu

Erie Community College



121 Ellicott Street
Buffalo, NY 14203
716.851.1ECC
info@ecc.edu

POPULAR MAJORS

Nursing, Business
Administration, Early
Childhood, Paralegal,
Advanced Manufacturing,
Hospitality/Culinary Arts

WHAT'S NEW?

Police Science, Environmental
Science, Distance Education,
Service Learning

Undergraduates 13,940
Student Faculty Ratio 18 to 1

Erie Community College (ECC) offers nearly 100 degree and certificate programs designed to advance focused students forward. ECC is consistently ranked as one of the nation's top associate degree and certificate producers. The three-campus college also operates its own Vehicle Technology Training Center, the only comprehensive post-secondary automotive-related training facility in Western New York.

At \$163 per credit, ECC continues to be affordable and a popular choice for the area's high school seniors. The college hosts a thriving NJCAA athletic program, boasts a vibrant student community and is proud of its veteran-friendly environment for returning servicemen. Transfer agreements with four-year schools make it easy for graduates to transition forward, and the college's workplace-focused curriculum is cultivated to train students for immediate employment.

ECC has an estimated \$668 million annual impact on the Western New York economy and fosters cooperative partnerships with over 200 local businesses.

Learn more at www.ecc.edu

Fulton-Montgomery Community College



2805 State Highway 67
Johnstown, NY 12095
518.736.FMCC
intl@fmcc.suny.edu

POPULAR MAJORS

Business, Computer Science,
Criminal Justice, Engineering
Science, Fine Arts, Liberal
Arts & Sciences

UNIQUE PROGRAMS

Center for Engineering and
Technology, Intensive English
Language Program

Undergraduates 2,800
Student Faculty Ratio 22 to 1

FM is located in upstate New York, in Johnstown, between Albany and Utica. FM provides a quality education in an environment that nurtures success. A hub for science, technology, and the arts, FM offers 43 degree and certificate programs designed to help students achieve their career and transfer goals.

FM's campus includes a College Union building, the Evans Library, Communications and Media Arts building, a Physical Education building, which houses a state-of-the-art fitness center, and a classroom building.

Just a short walk from campus is Campus View Student Housing, a 288-bed residential complex featuring suite accommodations. Residential students participate in a full-service meal plan.

As a part of the NJCAA, we offer Division III sports in men's and women's basketball, soccer, baseball, softball and volleyball. Students can choose from over 30 on-campus clubs and organizations. Over 120 international students attend FM, representing over 20 countries.

Learn more at
www.fmcc.edu

Herkimer County Community College



100 Reservoir Road,
Herkimer, NY 13350
315.866.0300, ext. 8278
admissions@herkimer.edu

POPULAR MAJORS

Business Administration,
International Business,
Travel and Tourism: Events
Management

UNIQUE PROGRAMS

Crime & Intelligence Analysis,
Cybersecurity, Forensic
Investigations, Digital
Filmmaking, Music Industry,
Physical Therapist Assistant

Undergraduates 3,700
Student Faculty Ratio 21 to 1

Herkimer County Community College is a residential community college located on a scenic hilltop in central New York. The campus and surrounding area provide a safe, friendly, small-town environment.

Herkimer enrolls over 100 international students from over 20 different countries and offers 40 associate degree and certificate programs with 18 programs available completely online through the College's Internet Academy. We maintain transfer agreements with SUNY and many private colleges, allowing for a smooth transition.

More than 600 students live in campus apartment-style housing. With nearly 40 student clubs and organizations, there's an abundance of opportunities for students to get involved on campus, develop leadership skills, and participate in academic, civic, cultural and social activities. With 33 national athletic championships and 28 National Academic Team of the Year awards, HCCC is known nationally for its outstanding athletic programs.

Learn more at
www.herkimer.edu

Jamestown Community College



Jamestown Campus:
525 Falconer Street
Jamestown, NY 14701
716.338.1001, 800.388.8557
admissions@mail.sunyjcc.edu

Cattaraugus County Campus:
260 North Union Street
Olean, NY 14760
716.376.7501, 800.388.8557
oleanadmissions@
mail.sunyjcc.edu

POPULAR MAJORS

Business, Humanities,
Math/Science, Biotechnology

WHAT'S NEW?

Environmental Science,
Summer English Language
Immersion Program

Undergraduates 3,926
Student Faculty Ratio 18 to 1

Jamestown Community College is a comprehensive, open access, community-centered educational institution offering liberal arts transfer degree programs, career programs, developmental education, and business and industry training.

Campuses are located in Jamestown and Olean with extension centers situated in Dunkirk, NY and Warren, PA. Residential housing is available on the Jamestown Campus. JCC awards associate in arts and associate in science degrees that are transferable to four-year institutions, associate in applied science degrees, and one-year certificates. Seven of JCC's academic programs can be completed online.

Characterized by a climate of informal interaction between faculty and students, JCC provides a learning environment which encourages growth and change while maintaining high academic standards.

Athletes on both campuses participate in Region III of the National Junior College Athletic Association (NJCAA).

Learn more at
www.sunyjcc.edu

Mohawk Valley Community College



1101 Sherman Drive
Utica, NY 13501
001-315-792-5350
International.admissions@
mvcc.edu

POPULAR MAJORS

Health careers, Liberal Arts and Sciences, Business, Computer, Engineering/Nanotechnology, English as a Second Language (ESL) Certificate, Graphic Design/Arts

WHAT'S NEW?

Health career options, Computer Science: Cyber Security, 21 national sports championship

Undergraduates 7,650
Student Faculty Ratio 21 to 1

Mohawk Valley Community College (MVCC) is New York State's first community college. We are on the move with a vibrant culture, academic programs for career and transfer, caring student services, and state-of-the-art facilities. Our Utica campus offers residence halls for 500 students, with a range of programming and activities designed to help our diverse international student population acclimate to the campus community.

You can choose from a wide variety of career and transfer options, graphic arts, business, digital animation, engineering, health care, hospitality, sports and recreation, education, criminal justice, technologies and trades, human services, and English as a Second Language (ESL) certificate. Many programs, including SUNY's only ESL Certificate program, are enhanced by dual admission and articulation agreements with numerous four-year colleges. The "Hawks" have an overall winning record of over 70 percent to go along with our 21 national team championships. Whether it's career training or transfer preparation, MVCC can be the springboard for your success.

Learn more at [www.mvcc.edu/
international-student-services](http://www.mvcc.edu/international-student-services)

Monroe Community College



1000 East Henrietta Road
Rochester, NY 14623
585.292.2200
admissions@monroecc.edu

POPULAR MAJORS

Business, Education, Criminal Justice, Engineering, Hospitality

WHAT'S NEW?

Student shuttle between Brighton and Damon campuses, renovation of existing space into new classrooms, Clinical Lab Technician (AAS)

Undergraduates 17,699
Student Faculty Ratio 19 to 1

Monroe Community College is one of the most recognized community colleges in the nation, known for the innovation and quality of its academic programs and the commitment of its professors.

Whether your goal is to earn a bachelor's degree or start a career after graduating, MCC is the right place to start.

Last year, MCC graduates transferred to over 140 colleges and universities across the country. Complete the first two years of your bachelor's degree at MCC and transfer your credits to colleges and universities across the country. Articulation agreements with 70 colleges make transferring seamless. Our career programs are technical and vocational programs designed to provide the specialized skills to start a rewarding career immediately after graduation.

At MCC you can also explore your interests through clubs, top-ranked athletic teams, honors programs, travel and more. New all-suite residence halls house 772 students on campus.

Learn more at www.monroecc.edu

Nassau Community College



1 Education Drive
Garden City, NY 11530
516.572.7053
isaoff@ncc.edu

POPULAR MAJORS

Liberal Arts, Business Administration, Physical Education Studies, Health Studies, Fashion Buying & Merchandising, Apparel Design, Interior Design, Marketing, Engineering, Nursing, Communication Arts, Hotel Technology, Nutrition, Food Service Administration, Restaurant Management

WHAT'S NEW?

Emergency Management (AS), Health Studies (AS), Physical Education Studies (AS)

Undergraduates 23,226
Student Faculty Ratio 16 to 1

Nassau Community College has a nationwide reputation for excellence and is one of the largest community colleges in The State University of New York (SUNY). Our campus has new, modern structures and historical buildings.

Our student body is large and diverse, but our classes are small, averaging 18-25 students and are taught by a distinguished faculty. NCC has over 70 majors and programs of study. Our international students are active on campus, and are from over 90 countries.

Activities include regionally and nationally ranked men's and women's athletic teams and many clubs and organizations. Nassau is located on Long Island, 27 miles from New York City, and minutes from beaches and state parks.

NCC offers an intensive English as a Second Language program (LINCC). It is designed for students who want to attend college, but who need to improve their English skills first. For more information, please see <http://www.ncc.edu/campuservices/lincc.shtml>.

Learn more at
www.ncc.edu/admissions/

North Country Community College



23 Santanoni Avenue
P.O. Box 89
Saranac Lake, NY 12983
518.891.2915, ext. 686
admissions@nccc.edu

POPULAR MAJORS

Nursing, Radiologic Technology, Criminal Justice, Wilderness Recreation, Sports & Event Management, transfer programs

WHAT'S NEW?

Ranked best community college in New York and 22nd in the U.S. by *Washington Monthly* magazine

Undergraduates 2,200
Student Faculty Ratio 17 to 1

North Country's campus in Saranac Lake is located in the Adirondack Park and just seven miles from America's Olympic Capital, Lake Placid. In 1980, NCCC was the Official College of the Winter Olympics and the College continues to maintain a strong relationship with the U.S. Olympic Training Center and Olympic athletes.

North Country provides the highest level of personalized attention and service to our students through instruction, faculty mentoring and advisement, athletics, and student life programming. Many transfer options are available to graduates and NCCC offers joint admission with SUNY Plattsburgh and SUNY Potsdam.

To serve our students, North Country has two additional locations—in Malone and Ticonderoga. NCCC provides a progressive curricula and degrees in Environmental Science, LPN/RN, Massage Therapy, Business, Computer Graphics, and Human Services.

Visit with us and learn more about one of New York's most unique colleges.

Learn more at
www.nccc.edu

You must apply directly to this campus

Rockland Community College



145 College Road
Suffern, NY 10901
845.574.4224
800.722.7666
info@sunyrockland.edu

POPULAR MAJORS

Business, Engineering, Criminal Justice, Education, Hospitality, Nursing, Paralegal, Performing Arts, Speech, Liberal Arts, Math & Science

WHAT'S NEW?

Environmental Science, Corporate and Homeland Security, Green Building Maintenance and Management

Undergraduates 8,020
Student Faculty Ratio 20 to 1

You must apply directly to this campus

Rockland Community College is "first choice" for students seeking value and a quality education. Enrollment of 8,000 includes 200 international students.

Located on a safe, attractive 175-acre campus in the scenic Hudson Valley just 25 miles northwest of New York City, RCC is convenient to the excitement and culture of New York City.

RCC offers 51 degree and certificate programs in the humanities, social sciences, arts, technologies, business, health professions, math and sciences. Most students transfer to four-year colleges. Each year, more than 100 institutions accept RCC transfer students. Highly motivated students in RCC's acclaimed honors program transfer within SUNY or to such colleges as Harvard, Yale, Cornell, Brown, Georgetown and Columbia.

The Rockland Hawks compete in the Mid-Hudson Athletic Conference, and RCC is a member of Region XV of the National Junior College Athletic Association.

Learn more at www.sunyrockland.edu



Sullivan County Community College



112 College Road
Loch Sheldrake, NY 12759
845.434.5750 ext. 4287
800.577.5243 ext. 4287
admissions@
sunysullivan.edu

POPULAR MAJORS

Liberal Arts, Criminal Justice, Business, Nursing, Graphic Design, Sports Management

WHAT'S NEW?

Pastry Arts, Green Building Management, Wind Turbine Technology, Emergency Management, Medical Assistant, Fire Protection Technology, Simulation and Gaming

Undergraduates 1,700
Student Faculty Ratio 17 to 1

SUNY Sullivan is located on 405 beautiful acres, only two hours away from New York City!

Degree programs include early childhood education, culinary/pastry arts, graphic arts/design, emergency management, green building management, communications/media arts, medical assistant and more.

Sullivan's nationally recognized honors program offers academics for strong students in the major of their choice. Scholarships and financial aid are available.

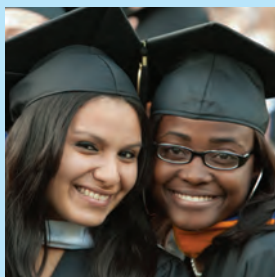
Check out SCCC's MAC lab, writing lab, computer and math labs, and TV studio. Residence halls and townhouses provide accommodations for over 400 students.

Athletics are housed in the 35,000 square foot Paul Gerry Field House and includes basketball courts, tennis courts, volleyball courts, a racquetball court, and a weight training facility.

Sullivan men's basketball team has held numerous NJCAA Division III championships. Division II men's baseball, women's athletics, co-ed cheerleading, and campus events draw crowds!

Learn more at www.sunysullivan.edu

Westchester Community College



75 Grasslands Road
Valhalla, NY 10595
914.606.6735
admissions@sunywcc.edu

WHAT'S NEW?

Fashion Merchandising (AAS); Computer Science (AS); Global Business (AS); TESOL Certificate
Online: Liberal Arts and Sciences/Social Science (AA); Liberal Arts and Sciences/Humanities (AA); Computer Security and Forensics Certificate

Undergraduates 13,000
Student Faculty Ratio 17 to 1

Westchester Community College offers over 60 degree and certificate programs at the main campus or at extension campuses throughout Westchester and Putnam Counties. At the beautiful 218-acre main campus in Valhalla, New York, just 45 minutes north of New York City, is the Gateway Center, housing the English Language Institute, business, modern language, and international student programs; the Volunteer Center; state-of-the-art labs and classrooms; an auditorium; and a café.

The English language Institute serves over 4,000 students with eight levels of ESL instruction; Intensive English; University Preparation; TOEFL Preparation; and a TESOL certificate program.

The college offers an Honors Program. The Academic Support Center provides tutorial assistance. The Career and Transfer Center helps students move into jobs or further study. More than \$1 million in scholarships helps ensure a smooth transition to four-year colleges and universities. Counselors and staff provide a caring atmosphere for students.

Learn more at www.sunywcc.edu

You must apply directly to this campus

SUNY Korea



119 Songdo Munhwa-ro,
Yeonsu-gu
Incheon, Korea 406-840
p: +82-32-626-1114
f: +82-32-626-1249

POPULAR MAJORS

M.S. Programs in Technological Systems Management and in Computer Science; Ph.D. Programs in Technology, Policy, and Innovation (TPI), and in Computer Science; Certificate in Quantitative Finance

WHAT'S NEW?

IT Consilience Creative Project Scholarship (Computer Science Department), with full tuition and housing. Each student in the It Premium Project gets an additional stipend as a Research Assistant; Undergraduate program (B.S. in Technological Systems Management) will begin in Spring 2013.

SUNY Korea joins the SUNY system as the first international campus located at the Songdo Global University Campus in Incheon, Korea. It offers new campus facilities, affordable education, and an American-style education taught by American professors from Stony Brook University.

The combination of academic excellence, scholarly research, and a growing network of industry connections attracts the best students from Korea as well as other Asian countries and beyond.

SUNY Korea provides excellent programs and a competitive environment. The curriculum of graduate degree programs at SUNY Korea is that of Stony Brook University. SUNY Korea features programs in the Department of Technology and Society (M.S. in Technological Systems Management and Ph.D. in Technology, Policy, and Innovation) and in the Department of Computer Science (both M.S. and Ph.D. in Computer Science). Students may also obtain their Certificate in Quantitative Finance. Programs offered by SUNY Korea have selective admissions, limited to highly qualified students and according to the standards and requirements of Stony Brook University. Upon completion of graduate courses, a degree is granted from Stony Brook University.

Learn more at www.sunykorea.ac.kr

Academic Program Information

Who is an Undergraduate Student?

An undergraduate student in the United States is a student seeking one of two degrees—an Associate degree or a Bachelor's degree. We offer both at SUNY.

Associate Degree:

- › Usually takes two years to complete.
- › Offered at SUNY community colleges or technology colleges.
- › May be transferred to a 4-year degree.

Bachelor's Degree:

- › Usually takes four years to complete.
- › Offered at degree granting institutions known as university centers, university colleges and technology colleges.
- › Is highly flexible and students choose their own academic program.

In the first two years of an undergraduate degree program, students take general education requirements in areas such as History, Arts, Basic Communication, Foreign Language, Humanities, Math, Natural Sciences, World Civilizations, Social Sciences, and Western Civilization. In years 3 and 4, students choose an academic major, which is an area of specialization.

How to Choose an Academic Major?

SUNY offers thousands of undergraduate programs to choose from so you can feel comfortable choosing a major in an area in which you are already familiar, or you can try a completely new subject area.

To search for a SUNY undergraduate program, go to www.suny.edu/academic/programs OR use the listings in the next section of this prospectus.

SUNY also offers a wide variety of graduate degrees. Please visit the SUNY website for a graduate program search tool to assist you in finding the campus that is right for you: <https://www.suny.edu/programsearch/>.

Check the Application Requirements for each SUNY campus

Application requirements can vary from one SUNY campus to another. It is very important to check the specific requirements on the website of each SUNY campus you are interested in.

What are some general application requirements?

- › **SUNY application form and fee.**
- › **Educational credentials.** This is typically your secondary/high school diploma and transcripts, as well as any final national exams required in your country. These must be certified copies.
- › **Standardized test scores.** Scores may be required to assess your academic ability and English proficiency level.
- › **Recommendation letters.** The head or principal of your school, your school counselor, your personal tutor, teachers, sponsors from extracurricular activities, coaches, or supervisors from professional experiences may write recommendation letters. Your recommenders must be able to write about your work and be able to assess your potential to do well in pursuing a higher education degree. Be sure to choose someone who knows you well.
- › **Essay/Personal Statement.** This is your chance to write about your interests and strengths. It is often considered one of the most important aspects of your application and gives you a chance to tell the admissions officials why you want to apply to that particular SUNY campus.

Years 1-2 General Education ➔ Years 3-4 Specialized Major

Bachelor's Degree Programs

The programs in the coded listings that follow are major programs of study at the designated campuses. You may apply to one curriculum per college choice. At Purchase College, you may apply to one program in Liberal Arts & Sciences, one program in each of the Fine & Performing Arts, and two programs in music, but you must pay an application fee for each choice.

KEY: PROGRAMS BEGIN IN SEPTEMBER/JANUARY UNLESS OTHERWISE NOTED

- *** Program also begins in June
- A** Audition required
- E/W** Evening/Weekend
- F** Freshmen only
- J** Sept entrance only - for information on starting in Jan, contact Admissions Office
- P** Portfolio required
- S** Sept entrance only
- T** Transfers should contact school for requirements
- U** Jr./Sr. transfers only (generally 48-72 credit hours required)

Agriculture and Natural Resources

- 1914 Agricultural Business Development
Morrisville
- 0895 Agricultural Business Management
Cobleskill (BS/BT)
- 0898 Agricultural Equipment Technology
Cobleskill
- 0882 Agriculture Education
Oswego
- 0896 Animal Science
Cobleskill (BS/BT)
- 1605 Dairy Management
Morrisville
- 2242 Environmental and Energy Technologies
Cobleskill
- 1321 Equine Science
Morrisville (U)
- 1857 Fisheries & Aquaculture
Cobleskill
- 0837 Forest Ecosystem Science
ESF
- 0230 Forest Resource Management: General Forestry
ESF
- 1941 Horticultural Business Management
Morrisville
- 1851 Horticulture Technology Management
Farmingdale
- 1946 Landscape Contracting
Cobleskill
- 1644 Natural Resources Management
ESF
- 0897 Plant Science
Cobleskill
- 1610 Renewable Resources Technology
Morrisville (U)
- 2024 Turfgrass Management: Golf Turf Management
Cobleskill
- 2025 Turfgrass Management: Sports Turf Management
Cobleskill
- 0169 Water Resources
Brockport
Oneonta
Oswego
- 1858 Wildlife Management
Cobleskill

Architecture & Environmental Design

- 1852 Architectural Design & Building
Delhi (S)
- 2037 Architectural Engineering Technology
Farmingdale (J)
- 1452 Architectural Technology
Alfred State (J)
- 0135 Architecture
Alfred State (J)
- 0240 Landscape Architecture
ESF

Area Studies

- 0345 Africana Studies
Binghamton
- 1579 Africana & Latino Studies
Oneonta
- 0304 American Studies
Geneseo
Old Westbury
Oswego
- 1674 Asian & Asian American Studies
Binghamton
- 0305 Asian Studies
New Paltz
- 0112 Chinese Studies
Albany*
- 0317 Classical Studies
Binghamton
- 0359 Classical Studies: Greek & Latin
Binghamton
- 1683 East Asian Studies
Albany
- 1024 Japanese Studies
Albany*
- 0300 Judaic Studies
Binghamton
- 2261 Korean Studies
Binghamton
- 0237 Latin American-Caribbean Studies
Binghamton
- 0841 Latin American Studies
Albany*
- 0160 Puerto Rican Studies
Albany*

Biological Studies

- 1951 Adolescence Biology Inclusive Education
Brockport
- 0127 Adolescence Education: Biology
Buffalo State*
Cortland
Fredonia*
Geneseo
New Paltz (T)
Old Westbury
Oneonta
Oswego
Plattsburgh (See also 1880)
Potsdam
- 0127 Adolescence Education: Biology (Jointly registered with Columbia-Greene, Dutchess, Ulster)
New Paltz (T)

0074 Adolescence Education: Biology (Co-op with Syracuse)
ESF

1760 Aquatic & Fisheries Science
ESF

0387 Biochemistry
Binghamton
Brockport
Cortland
Fredonia
Geneseo
New Paltz
Old Westbury
Oswego
Plattsburgh
Potsdam
Purchase

0313 Biological Sciences: Biology
Albany*
Binghamton
Brockport
Buffalo State*
Cortland
ESF
Fredonia*
Geneseo
New Paltz
Old Westbury
Oneonta
Oswego
Plattsburgh
Potsdam (BA/BS)
Purchase
SUNYIT (F)

1880 Biology/Adolescence Education (BA/MST Combined Degree Prog.)
Plattsburgh

1738 Biomedical Science
Cortland

1676 Bioscience
Farmingdale (T)

0794 Biotechnology
Cobleskill
ESF

1739 Conservation Biology
Cortland
ESF

0232 Environmental Biology
ESF

1025 Environmental & Forest Biology 3+2 ESF
New Paltz (F)

1759 Forest Health
ESF

1049 Human Biology
Albany*

1592 Middle Childhood Education: Biology
Buffalo State
Fredonia
Old Westbury

0838 Molecular Genetics
Fredonia

1758 Natural History & Interpretation
ESF

1757 Wildlife Science
ESF

0358 Zoology
Oswego

Business & Management

0281 Accounting
Albany*
Binghamton
Brockport
Fredonia*
Geneseo
New Paltz
Old Westbury
Oswego (MBA option)
Plattsburgh
SUNYIT

1860 Arts Management
Purchase

1656 Automotive Management (BBA)
Morrisville

1093 Aviation Administration
Farmingdale

2207 Business & Technology Management
Delhi

2022 Business & Technology Management at Schenectady CC
Delhi (U)

0280 Business Administration
Albany*

Alfred State
Binghamton
Brockport
Buffalo State
Cobleskill
Fredonia*
Geneseo
Morrisville
Old Westbury
Oswego
Plattsburgh
Plattsburgh at Queensbury (U)
Potsdam
SUNYIT

0280 Business Administration (Jointly registered with Canton)
Potsdam

0751 Business Economics
Cortland
Oneonta
Potsdam

2038 Business Management
Farmingdale

1509 Business & Professional Golf Management
Delhi

1761 Construction Management
ESF

1622 Culinary Arts Management
Cobleskill

0098 Economics-Business Administration 4+1
Clarkson
Cortland

0156 Education: Business & Marketing
Buffalo State*

1864 Emergency Management
Canton

1839 Entrepreneurship
Plattsburgh

1936 Entrepreneurship & Small Business Management
Morrisville (U)

0248 Fashion Merchandising 3+1 FIT
Buffalo State*
Oneonta

0282 Finance
Brockport
Canton
Fredonia*
New Paltz
Old Westbury
Oswego
Plattsburgh

1938 Financial Planning
Alfred State

2229 Financial Services
Cobleskill

1424 Food Service & Restaurant Administration
Oneonta

1646 General Business
New Paltz

1927 Global Supply Chain Management
Plattsburgh

1508 Golf Course Management
Delhi

11851 Horticultural Technology Management
Farmingdale

1261 Hospitality Administration
Buffalo State*

1823 Hospitality Management: Club Management
Delhi

1527 Hospitality Management: Culinary Arts
Delhi

1168 Hospitality Management: Hotel & Resort Management
Delhi

1772 Hospitality Management: Hotel & Restaurant Management (Jointly registered with Schenectady)
Delhi

1170 Hospitality Management: Restaurant & Food Service Management
Delhi

1169 Hospitality Management: Travel & Tourism Management
Delhi

0073 Hotel, Restaurant & Tourism Management
Plattsburgh

1124 Human Resource Management
Oswego

0283 Industrial & Labor Relations
Old Westbury (BA/BS)

0887 Industrial Management
Fredonia*

2042 Information Technology Management
Morrisville

2243 Information Systems Auditing
Delhi

0724 International Business
New Paltz
Plattsburgh

0892 International Business & Economics
Brockport

1645 Management
Canton
New Paltz
Plattsburgh

0708 Management Accounting
Oswego

Bachelor's Degree Programs

Check out a few listings. For example, there is a wide variety of business (business administration, management, marketing, finance, etc.) and engineering disciplines. There may be similarities as well as differences from one curriculum heading to another. Contact any campus directly to get the specifics.

KEY: PROGRAMS BEGIN IN SEPTEMBER/JANUARY UNLESS OTHERWISE NOTED

- *** Program also begins in June
- A** Audition required
- E/W** Evening/Weekend
- F** Freshmen only
- J** Sept entrance only - for information on starting in Jan, contact Admissions Office
- P** Portfolio required
- S** Sept entrance only
- T** Transfers should contact school for requirements
- U** Jr./Sr. transfers only (generally 48-72 credit hours required)

- 0858 **Management Information Systems**
Old Westbury
Plattsburgh
- 0284 **Management: Management Science**
Fredonia*
- 1705 **Management 4+1**
Alfred University
Geneseo
Potsdam
- 0008 **Management 3+2**
Buffalo University
Geneseo
- 0069 **Management 4+1** Clarkson
Cortland
Fredonia*
Geneseo
Oneonta
Plattsburgh
Potsdam
- 2062 **Management 4+1**
Niagara University
Fredonia*
- 1703 **Management 3+2** Pace
Geneseo
- 1706 **Management 4+1** RIT
Fredonia
Geneseo
Oneonta
Potsdam
- 1689 **Management 4+1**
St. Bonaventure
Fredonia*
- 1704 **Management 3+2**
Syracuse University
Geneseo
- 1707 **Management 4+1**
Union College
Geneseo
Potsdam
- 0285 **Marketing**
Brockport
Fredonia*
New Paltz
Old Westbury
Oswego
Plattsburgh
- 0022 **Music: Business**
Potsdam (A)
- 1879 **Operations Management & Information Systems**
Oswego
- 1824 **Professional Accounting**
Oneonta
- 2138 **Risk Management Insurance**
Oswego
- 0182 **Sport Management**
Alfred State (J)
Brockport
Canton
Cortland
Farmingdale
Fredonia*

- 1318 **Technology Management**
Alfred State (J)(U)
Morrisville (U)
- 1624 **Technology Management: Information Technology**
Delhi
- 1627 **Technology Management: Resort & Recreation Service**
Morrisville
- 1672 **Veterinary Services Management**
Canton (U)
- 1742 **Veterinary Technology Management (BBA)**
Delhi (U) (Online degree only)

Communications

- 2306 **Audio-Radio Production**
Plattsburgh
- 2307 **Broadcast Journalism**
Plattsburgh
- 0758 **Broadcasting: Radio & TV**
Oswego
- 1912 **Communication & Information Design**
SUNYIT
- 2210 **Communication & Information Design/Information Design & Technology (BS/MS)**
SUNYIT
- 2329 **Communication & Social Interaction**
Oswego
- 0376 **Communication Arts & Rhetoric**
Albany
- 2055 **Communication in Technology**
Cobleskill
- 1822 **Communication Studies**
Buffalo State
New Paltz
Plattsburgh
- 1716 **Communication Studies: Broadcast & Mass Communication**
Oswego
- 0279 **Communications**
Brockport
Buffalo State
Cortland
Fredonia*
Geneseo
Plattsburgh
- 1534 **Communications: Audio/Radio Production**
Fredonia*
- 1535 **Communications: Communication Studies**
Fredonia*
Oneonta
- 1536 **Communications: Media Management**
Fredonia*
- 1537 **Communications: Public Relations**
Fredonia*
- 1538 **Communications: Video Production**
Fredonia*
- 2018 **Digital Media & Animation**
Alfred State (J)
- 2302 **Digital Media Production**
New Paltz
Plattsburgh
- 2301 **Digital Media Programming & Management**
New Paltz
- 2253 **Graphic Design Technology**
Cobleskill

- 0760 **Journalism**
Albany
Brockport
Buffalo State*
Fredonia*
New Paltz
Oswego
Plattsburgh
Purchase
- 2017 **Journalism & Communication for Online Media**
Morrisville
- 1812 **Journalism: Magazine**
Plattsburgh
- 2236 **Journalism: Multimedia**
Plattsburgh
- 1813 **Journalism: Newspaper**
Plattsburgh
- 1333 **Mass Communications**
Oneonta
- 1072 **Media & Communications**
Old Westbury
- 1960 **Media Production**
Buffalo State
- 1762 **New Communication Media**
Cortland
- 1021 **Professional & Technical Communications**
Farmingdale
- 0078 **Public Communication**
Buffalo State*
- 0763 **Public Relations**
Oswego
Plattsburgh
- 0354 **Speech Communications**
Potsdam
- 2019 **Television and Film Arts**
Buffalo State (S)
- 2308 **TV-Video Production**
Plattsburgh
- 1091 **Visual Communications: Art & Graphic Design**
Farmingdale (P)

Computer & Information Science

- 2097 **Applied Computing**
SUNYIT
- 0170 **Computer & Information Science**
SUNYIT (BS/MS, Accelerated)
- 1357 **Computer Engineering Technology**
Alfred State (J)
Farmingdale
SUNYIT
- 0095 **Computer Information Systems**
Brockport
Buffalo State*
Fredonia
SUNYIT
- 1510 **Computer Programming & Information Systems**
Farmingdale
- 0286 **Computer Science**
Albany*
Binghamton
Brockport
Fredonia*
New Paltz
Old Westbury
Oneonta
Oswego
Plattsburgh
Potsdam (BA/BS)
SUNYIT
- 0134 **Computer Science & Applied Mathematics**
Albany*

- 1186 **Geographic Information Systems (GIS)**
Cortland
- 0015 **Information Science**
Albany*
Oswego
- 2085 **Information Security & Assurance**
Alfred State
- 2045 **Information Technology**
Canton (B.Tech.)
Cobleskill (B.Tech.)
Plattsburgh (BS)
- 1502 **Information Technology: Applications Software Development**
Alfred State
Morrisville (T)
- 1503 **Information Technology: Electronic Marketing & Publishing**
Morrisville (T)
- 1504 **Information Technology: End-User Support**
Morrisville (T)
- 1505 **Information Technology: Network Administration**
Alfred State
Morrisville (T)
- 1506 **Information Technology: Web Development**
Alfred State
Morrisville (T)
- 0858 **Management Information Systems**
Old Westbury
Plattsburgh
- 2221 **Network & Computer Security**
SUNYIT
- 2082 **Software Technology**
Farmingdale

Education

- For elementary school teaching, see Childhood Education Grades 1-6 or Early Childhood Education Birth-Grade 2, or the combination, Early Childhood/Childhood Education. For teaching middle school grades, see Middle Childhood Education. For teaching high school subjects, see Adolescence Education listed under the major subject or content area. For example, Adolescence Education: Mathematics is listed under the heading, Mathematics.
- 0882 **Agriculture Education**
Oswego
 - 0142 **Art Education**
Buffalo State*
New Paltz (P)(T)
 - 1110 **Art Education with St. Lawrence University**
Potsdam
 - 1710 **Career & Technical Education**
Buffalo State*
 - 1557 **Childhood Education (Grades 1-6) (See 1559)**
Brockport
Buffalo State*
Cortland
Fredonia*
Geneseo
Old Westbury
Oneonta
Oswego
Plattsburgh
Plattsburgh at Queensbury (S)(U)

- 1557 **Childhood Education (Grades 1-6) (Jointly registered transfers only with Columbia-Greene, Dutchess, Ulster)**
New Paltz (T)(U)
- 1576 **Childhood Education: Bilingual Extension (Grades 1-6)**
Brockport
Old Westbury
- 1980 **Childhood Inclusive Education**
Brockport
Fredonia*
- 2147 **Childhood/Special Education (BS/MSED Combined Degree Prog.)**
Plattsburgh
- 2244 **Coaching**
Cortland
- 0767 **Early Childhood Education (Birth-2) (See 1559)**
Buffalo State
Cortland
Fredonia
Geneseo
- 0767 **Early Childhood Education (Birth-2) (Jointly registered transfers only with Columbia-Greene, Dutchess, Orange, Ulster)**
New Paltz (T)(U)
- 1559 **Early Childhood/Childhood Education (Birth-2 & Grades 1-6)**
Buffalo State
Cortland
Fredonia*
New Paltz
Oneonta
Potsdam
- 0156 **Education: Business & Marketing**
Buffalo State*
Oswego
- 1226 **Exercise Science**
Cortland
- 1411 **Family & Consumer Sciences Education**
Buffalo State
Oneonta
Oswego
- 0881 **Health Careers Education**
Oswego
- 0146 **Health Education**
Brockport
Cortland
- 1826 **Inclusive Special Education (Grades 1-6)**
Cortland
- 1558 **Middle Childhood Education**
Buffalo State*
Fredonia*
- 0152 **Music Education**
Buffalo State
Fredonia* (A)
Potsdam (A)
- 0368 **Physical Education**
Brockport
- 0147 **Physical Education: Teacher Education**
Brockport
Cortland
- 1560 **Special Education & Childhood Education (Grades 1-6)**
Buffalo State*
Geneseo
Old Westbury
Plattsburgh (See 2147)

0113 Special Education with Bilingual Extension Old Westbury	0204 Engineering 3+2 Cornell Fredonia*	2248 Construction Management: Design & Building Delhi	0308 Art: Fine & Visual Arts (See 0177, 0361 & 0373) Albany*	0195 Music: Composition Fredonia (A) Purchase (A)
1578 Speech & Language Disabilities Cortland Plattsburgh	0238 Engineering 3+2 Louisiana Tech Fredonia*	1603 Construction Management Engineering Technology Alfred State Farmingdale	Binghamton Buffalo State* (P) Cortland Fredonia* (P) Oneonta Oswego (BA) Plattsburgh Potsdam (BFA)(P)	0732 Music Industry Oneonta
2245 Sport Studies Cortland	1287 Engineering 3+2 New Paltz Albany (S)	0216 Electrical Engineering Technology Alfred State (J) Buffalo State* Farmingdale SUNYIT	0309 Art History Binghamton Buffalo State*	0366 Music: Performance Binghamton Fredonia* (A) Potsdam (A)
1829 Teaching English as a Second Language Cortland	0158 Engineering 3+2 Ohio State Fredonia*	1897 Electrical Engineering Technology: Electronics Buffalo State	0373 Art History Binghamton Buffalo State*	1832 Music Performance: Instrumental Purchase (A)
0228 Teaching English to Speakers of Other Languages Oswego	1702 Engineering 3+2 Penn State Geneseo	1898 Electrical Engineering Technology: Smart Grid Buffalo State	0383 Art History Binghamton Buffalo State*	1833 Music Performance: Jazz Studies Purchase (A)
0153 Technical Education Oswego	1830 Engineering 3+2 Penn State Behrend Fredonia	2234 Electrical Technology Canton	0384 Art History Binghamton Buffalo State* (BFA/BS) Potsdam Purchase	1834 Music Performance: Vocal Purchase (A)
1101 Technology Education Buffalo State* Oswego	0219 Engineering 3+2 Polytech Institute of NY Oneonta	0236 Electromechanical Engineering Technology Alfred State (J)	1083 Art of the Book Purchase (BFA)	1835 Music Production Purchase (A)
2195 Theatre Education (Pre-K-12) Potsdam	0161 Engineering 3+2 RPI Albany (F)(S) Fredonia* Oneonta	0257 Industrial Technology Buffalo State* Farmingdale (Automotive/Facilities)	0177 Art Studio (See 0308, 0361 & 0373) Brockport (BA/BS) (BFA P) Cortland (BFA P) Oneonta Plattsburgh (BA) (BFA P) Potsdam	2100 Music: Studio Composition Purchase (A)
0151 Trade Education Oswego	0174 Engineering 3+2 Stony Brook Cortland Plattsburgh	1935 Industrial Technology Management Canton	0178 Art Studio (See 0308, 0361 & 0373) Brockport (BA/BS) (BFA P) Cortland (BFA P) Oneonta Plattsburgh (BA) (BFA P) Potsdam	0178 Music Therapy Fredonia* (A)
Engineering	0239 Engineering 3+2 Syracuse Fredonia* Geneseo Oneonta Plattsburgh	0261 Manufacturing Engineering Technology Farmingdale	0196 Art Studio (See 0308, 0361 & 0373) Brockport (BA/BS) (BFA P) Cortland (BFA P) Oneonta Plattsburgh (BA) (BFA P) Potsdam	0196 Musical Studies Potsdam (A)
1532 Bioengineering Binghamton	0705 Engineering 3+2 Tri-State Fredonia*	0235 Mechanical Engineering Technology Alfred State (J) Buffalo State Farmingdale SUNYIT	0242 Arts and Letters Buffalo State*	1524 Musical Theatre (BA) Cortland (A) Geneseo (A)
1874 Bioprocess Engineering ESF	0719 Engineering 3+2 University of Rochester Geneseo	2250 Mechanical Technology Canton	1140 Ceramics Buffalo State* (BFA/BS) New Paltz (BFA) (P)(T)	1422 Musical Theatre (BFA) Fredonia (A)
1866 Civil Engineering SUNYIT (F)	0223 Engineering 3+3 RIT Fredonia* Geneseo	1046 Surveying Engineering Technology Alfred State	0362 Cinema Binghamton	1462 New Media Purchase
0843 Computer Engineering Binghamton New Paltz	0231 Environmental Resources Engineering ESF	1318 Technology Management Alfred State (J)(U) Morrisville (U) Oswego	1928 Cinema & Screen Studies Oswego	1740 New Media Design Cortland
2238 Electrical & Computer Engineering SUNYIT	1367 Industrial & Systems Engineering Binghamton	2251 Telecommunications Technology Farmingdale (F)	0386 Cinema Studies Purchase	0382 Painting Buffalo State* (BFA) New Paltz (BFA) (P)(T)
0266 Electrical Engineering Binghamton New Paltz	0268 Mechanical Engineering Binghamton		2072 Communication Design Buffalo State* (BFA)	1836 Painting & Drawing Purchase (BFA)
0229 Engineering Binghamton	2196 Nanoscale Engineering Albany		1601 Computer Art Oneonta	0383 Photography Buffalo State* (BFA) New Paltz (BFA) (P)(T) Purchase (BFA)
0233 Engineering 3+2 NYS Ceramics at AU Cortland Fredonia* Geneseo Oneonta	2148 Nanoscale Science Albany		0339 Dance Brockport (A) Potsdam	0382 Painting Buffalo State* (BFA) New Paltz (BFA) (P)(T) Purchase (BFA)
0321 Engineering 3+2 Binghamton Albany (F)(S) Buffalo State* Cortland Fredonia* Geneseo Oneonta Oswego Plattsburgh Potsdam	1767 Paper Engineering ESF		1421 Dance (BFA) Brockport (A) Fredonia (A) Purchase (A)(S)	2300 Playwriting and Screenwriting Purchase (S)
0218 Engineering 3+2 University at Buffalo Buffalo State* Cortland Fredonia* Geneseo Oneonta	1768 Paper Science ESF		0302 Fashion Design 3+1 FIT Buffalo State* Oneonta	0384 Printmaking: Lithography/Intaglio Buffalo State* (BFA) New Paltz (BFA) (P)(T) Purchase (BFA)
0157 Engineering 3+2 Case Western Reserve Cortland Fredonia* Geneseo Oswego	2077 Software Engineering Oswego		2073 Fibers Buffalo State* (BFA/BS)	0385 Sculpture Buffalo State* (BFA) New Paltz (BFA) (P)(T) Purchase (BFA)
0217 Engineering 3+2 Clarkson Albany (F)(S) Buffalo State* Cortland Fredonia* Geneseo Oneonta Oswego Plattsburgh Potsdam	Engineering Technology		0263 Film Purchase (BFA) (P)(S)	2300 Playwriting and Screenwriting Purchase (S)
0159 Engineering 3+2 Columbia Fredonia* Geneseo	1092 Aeronautical Science: Professional Pilot Farmingdale		0361 Fine Arts (See 0308, 0177 & 0373) Oswego (BFA Studio) (P)	0384 Printmaking: Lithography/Intaglio Buffalo State* (BFA) New Paltz (BFA) (P)(T) Purchase (BFA)
	1865 Alternative & Renewable Energy Systems Canton		2026 Graphic & Multimedia Design Canton	0385 Sculpture Buffalo State* (BFA) New Paltz (BFA) (P)(T) Purchase (BFA)
	2037 Architectural Engineering Technology Farmingdale (J)		1425 Graphic Design (BFA) New Paltz (P)(T) Oswego (P) Purchase (P)	2300 Playwriting and Screenwriting Purchase (S)
	1452 Architectural Technology Alfred State (J)		0241 Interdisciplinary Arts Brockport (BA/BS)	0384 Printmaking: Lithography/Intaglio Buffalo State* (BFA) New Paltz (BFA) (P)(T) Purchase (BFA)
	1611 Automotive Technology (BTech) Morrisville		1379 Interior Design Buffalo State* (BFA)	0385 Sculpture Buffalo State* (BFA) New Paltz (BFA) (P)(T) Purchase (BFA)
	1102 Civil Engineering Technology SUNYIT		1141 Metal New Paltz (BFA) (P)(T)	0385 Sculpture Buffalo State* (BFA) New Paltz (BFA) (P)(T) Purchase (BFA)
	2235 Civil & Environmental Technology Canton		2074 Metals/Jewelry Buffalo State* (BFA/BS)	0385 Sculpture Buffalo State* (BFA) New Paltz (BFA) (P)(T) Purchase (BFA)
	1357 Computer Engineering Technology Alfred State (J) Farmingdale SUNYIT		0335 Music Albany* Binghamton Buffalo State* (A) Fredonia* (A) Geneseo (A) New Paltz (A)(T) Oneonta Oswego Plattsburgh (A) Potsdam (A) Purchase (A)	0385 Sculpture Buffalo State* (BFA) New Paltz (BFA) (P)(T) Purchase (BFA)
		Environmental Studies		0385 Sculpture Buffalo State* (BFA) New Paltz (BFA) (P)(T) Purchase (BFA)
		1739 Conservation Biology Cortland ESF		0385 Sculpture Buffalo State* (BFA) New Paltz (BFA) (P)(T) Purchase (BFA)
		0744 Ecology Plattsburgh		0385 Sculpture Buffalo State* (BFA) New Paltz (BFA) (P)(T) Purchase (BFA)
		2242 Environmental and Energy Technologies Cobleskill		0385 Sculpture Buffalo State* (BFA) New Paltz (BFA) (P)(T) Purchase (BFA)
		1025 Environmental & Forest Biology 3+2 ESF New Paltz (F)		0385 Sculpture Buffalo State* (BFA) New Paltz (BFA) (P)(T) Purchase (BFA)
		1746 Environmental Geochemical Science New Paltz		0385 Sculpture Buffalo State* (BFA) New Paltz (BFA) (P)(T) Purchase (BFA)
		0319 Environmental Management 3+2 Duke Cortland		0385 Sculpture Buffalo State* (BFA) New Paltz (BFA) (P)(T) Purchase (BFA)
		0363 Environmental Science Brockport ESF Oneonta Plattsburgh		0385 Sculpture Buffalo State* (BFA) New Paltz (BFA) (P)(T) Purchase (BFA)
		0720 Environmental Studies Binghamton ESF Plattsburgh Potsdam Purchase		0385 Sculpture Buffalo State* (BFA) New Paltz (BFA) (P)(T) Purchase (BFA)
				0385 Sculpture Buffalo State* (BFA) New Paltz (BFA) (P)(T) Purchase (BFA)
		Fine & Applied Arts		0385 Sculpture Buffalo State* (BFA) New Paltz (BFA) (P)(T) Purchase (BFA)
		0262 Acting Fredonia* (BFA) (A) Purchase (BFA) (A)(S)		0385 Sculpture Buffalo State* (BFA) New Paltz (BFA) (P)(T) Purchase (BFA)

Bachelor's Degree Programs

Check out a few listings. For example, visual arts, studio arts, fine arts and art and design can be very similar in course offerings and student outcomes. Contact any campus directly to get the specifics.

KEY: PROGRAMS BEGIN IN SEPTEMBER/JANUARY UNLESS OTHERWISE NOTED

- *** Program also begins in June
- A** Audition required
- E/W** Evening/Weekend
- F** Freshmen only
- J** Sept entrance only - for information on starting in Jan, contact Admissions Office
- P** Portfolio required
- S** Sept entrance only
- T** Transfers should contact school for requirements
- U** Jr./Sr. transfers only (generally 48-72 credit hours required)

- 1727 **Visual Arts: Electronic Media**
Old Westbury
- 1904 **Visual Arts & New Media**
Fredonia* (BA) (P)
- 1899 **Visual Arts & New Media: Animation & Illustration**
Fredonia* (BFA) (P)
- 1901 **Visual Arts & New Media: Ceramics**
Fredonia* (BFA) (P)
- 1550 **Visual Arts & New Media: Drawing & Painting**
Fredonia* (BFA) (P)
- 1900 **Visual Arts & New Media: Graphic Design**
Fredonia* (BFA) (P)
- 1352 **Visual Arts & New Media: Media Arts**
Fredonia (BFA) (P)
- 1902 **Visual Arts & New Media: Photography**
Fredonia* (BFA) (P)
- 1903 **Visual Arts & New Media: Sculpture**
Fredonia* (BFA) (P)
- 1091 **Visual Communications: Art & Graphic Design**
Farmingdale (P)
- 2075 **Wood/Furniture**
Buffalo State* (BFA/BS)

Foreign Languages

- 0122 **Adolescence Education: French**
Buffalo State*
Cortland
Fredonia*
Geneseo
New Paltz (T)
Oneonta
Oswego
Plattsburgh (See also 1888)
Potsdam
- 0122 **Adolescence Education: French (Jointly registered with Dutchess)**
New Paltz
- 1871 **Adolescence Education: French/Spanish (7-12)**
Cortland
- 0123 **Adolescence Education: German**
Oswego
- 0124 **Adolescence Education: Spanish**
Buffalo State*
Cortland
Fredonia*
Geneseo
New Paltz (T)
Old Westbury
Oneonta
Oswego
Plattsburgh (See also 1887)
Potsdam

- 0124 **Adolescence Education: Spanish (Jointly registered with Dutchess, Ulster)**
New Paltz (T)
- 1955 **Adolescence French Inclusive Education**
Brockport
- 1959 **Adolescence Spanish Inclusive Education**
Brockport
- 0781 **Arabic**
Binghamton
- 0324 **French**
Binghamton
Brockport
Buffalo State*
Cortland
Fredonia*
Geneseo
New Paltz
Oneonta
Oswego
Plattsburgh
Potsdam

- 1888 **French/Adolescence Education (BA/MST Combined Degree Prog.)**
Plattsburgh

- 0328 **German**
Binghamton
Oswego

- 0829 **Hebrew**
Binghamton

- 0330 **Italian**
Binghamton

- 0782 **Language & Culture**
Purchase

- 0103 **Middle Childhood Education: French**
Buffalo State*
Fredonia*

- 0109 **Middle Childhood Education: Spanish**
Buffalo State*
Fredonia*

- 0353 **Spanish**
Albany*
Binghamton
Brockport
Buffalo State*

- Cortland
Fredonia*
Geneseo
New Paltz
Oneonta
Oswego
Plattsburgh
Potsdam

- 1887 **Spanish/Adolescence Education (BA/MST Combined Degree Program)**
Plattsburgh

- 0824 **Spanish Language, Hispanic Literature & Culture**
Old Westbury

Health Professions

Credit hour requirements vary. Please contact campus directly.

- 0764 **Athletic Training**
Brockport
Cortland
- 1266 **Cardiovascular Perfusion 2+2 with Upstate Medical (Separate application to Upstate is required)**
ESF

- 1354 **Communication Disorders & Science**
Fredonia*
New Paltz (T)
Plattsburgh

- 0704 **Community Health**
Cortland
Potsdam

- 0299 **Cytotechnology**
Plattsburgh

- 1489 **Dental Hygiene**
Canton (T)(U)
Farmingdale (U)

- 1226 **Exercise Science**
Brockport

- 2064 **Fitness & Wellness Leadership**
Plattsburgh

- 1525 **Funeral Services Administration**
Canton

- 2254 **Health and Fitness Promotion**
Canton

- 0881 **Health Careers Education**
Oswego

- 0723 **Health & Society**
Old Westbury

- 2043 **Health Care Management**
Canton

- 1126 **Health Information Management**
SUNYIT

- 0367 **Health Science**
Brockport

- 1066 **Health-Wellness**
Buffalo State*

- 1930 **Human Performance & Health Promotion**
Morrisville

- 1555 **Kinesiology**
Brockport

- 1556 **Kinesiology: Fitness Development**
Cortland

- 1483 **Medical Imaging Sciences (BS) 2+2 with Upstate Medical (Separate application to Upstate is required)**
ESF
Oneonta
Oswego (F)

- 0290 **Medical Technology**
Brockport
Farmingdale
Fredonia*
Plattsburgh

- 0883 **Medical Technology 2+2 with Upstate Medical (Separate application to Upstate is required)**
Cortland
ESF
Oneonta

- 0291 **Nursing**
Alfred State (T)(U)
Binghamton
Brockport
Canton (T)(U)
(RN required)
Farmingdale (J)(T)
Plattsburgh
SUNYIT (U)

- 1143 **Nursing (Accelerated non-nursing BA/BS required)**
Binghamton (S)(U)

- 2021 **Nursing (Online only)**
Delhi (U)

- 0192 **Nursing (RN required) (Offered full-time and part-time)**
Binghamton (U)
Brockport (U)
Plattsburgh (U)

- 1608 **Nursing/Family Nurse Practitioner (Accelerated BS/MS)**
SUNYIT (U)

- 2093 **Nursing/Nursing Education (BS/MS)**
SUNYIT (U) (RN required)

- 1769 **Occupational Therapy 4+3 Sage Graduate School**
Oneonta

- Physical Therapy:**
PT is a licensure program requiring a master's or higher degree. Typically, a student earns an undergraduate degree in a program such as biology, health science or exercise science before undertaking graduate work. Six-year doctorates are also available. Contact a campus of choice for guidance on pursuing a career in PT.

- 1756 **Physical Therapy 3+3 Upstate Medical**
Brockport (F)
ESF (F)
Geneseo (F)
Oneonta (F)
Oswego (F)

- 1278 **Physical Therapy 4+3 Upstate Medical**
Cortland
Oneonta
Oswego

- 1278 **Physical Therapy 4+3 Upstate Medical or Sage Graduate School**
Oneonta

- 1520 **Pre-Dental 3+4 (with Buffalo University)**
Fredonia
Geneseo

- 1112 **Pre-Med 3+4 NY College Osteopathic Medicine**
Geneseo
New Paltz (F)(S)
Old Westbury (F)(S)

- 0083 **Pre-Optometry 3+4 Optometry**
Albany
Binghamton
Fredonia
Geneseo
New Paltz (F)(S)
Oneonta
Oswego
Plattsburgh
Potsdam

- 0627 **Radiation Therapy (BS) 2+2 with Upstate Medical (Separate application to Upstate is required)**
ESF
Oneonta

- 0084 **Respiratory Therapy 2+2 with Upstate Medical (Separate application to Upstate is required)**
Cortland
ESF
Oneonta (F)

- 1578 **Speech & Language Disabilities**
Cortland
Plattsburgh

- 0259 **Speech & Hearing Science**
Cortland

- 1144 **Speech-Language Pathology**
Buffalo State*

- 2278 **Veterinary Technology**
Canton

- 1402 **Wellness Management**
Oswego

- Human Ecology**

- 1763 **Early Childhood Studies: Birth to Age 5**
Cobleskill

- 0289 **Dietetics**
Buffalo State*
Oneonta

- 1411 **Family & Consumer Sciences Education**
Buffalo State
Oneonta
Oswego

- 2319 **Fashion & Textiles**
Oneonta

- 0101 **Fashion & Textile Technology**
Buffalo State*

- 1889 **Human Development & Family Relations**
Plattsburgh

- 0297 **Human Ecology**
Oneonta

- 1890 **Nutrition**
Plattsburgh

- Humanities & Interdisciplinary Studies**

- 0120 **Adolescence Education: English**
Buffalo State*
Cortland
Fredonia*
Geneseo
New Paltz (T)
Oneonta
Oswego
Plattsburgh (See also 1882)
Potsdam

- 0120 **Adolescence Education: English (Jointly registered with Columbia-Greene, Dutchess, Ulster)**
New Paltz (T)

- 1954 **Adolescence English Inclusive Education**
Brockport

- 0309 **Art History (See 0309, p. 31)**
Potsdam
Purchase

- 1860 **Arts Management**
Purchase

- 0386 **Cinema Studies**
Purchase

- 1032 **Cognitive Science**
Oswego

- 0344 **Comparative Literature**
Binghamton
Geneseo

- 0797 **Creative Writing (BA)**
Oswego
Purchase (P)

- 2292 **Creative Writing (BFA)**
Potsdam

- 0825 **Dramatic Arts & English**
Geneseo (A)

0323 **English**
Albany*
Binghamton
Brockport
Buffalo State*
Cortland
Fredonia*
Geneseo
New Paltz
Old Westbury
Oneonta
Oswego
Plattsburgh
Potsdam

1882 **English/Adolescence Education (BA/MST Combined Degree Prog.)**
Plattsburgh

2276 **English: Creative Writing**
Potsdam

2089 **English: Language Arts**
Plattsburgh

2090 **English: Literature**
Plattsburgh
Potsdam

2291 **English: Literature/Writing**
Potsdam

2277 **English: Writing**
Potsdam

2091 **English: Writing Arts**
Plattsburgh

1097 **Gerontology Studies**
Oneonta

0377 **Interdisciplinary Studies**
Albany*
Buffalo State
Fredonia*
SUNYIT (U)

0341 **Liberal Arts**
Purchase

0214 **Liberal Studies**
Purchase (U) (Adult Degree Completion Program)

1679 **Liberal Studies: Arts**
Purchase (U) (Adult Degree Completion Program)

1724 **Liberal Studies: Communications/Media Studies**
Purchase (U) (Adult Degree Completion Program)

1725 **Liberal Studies: Legal Studies**
Purchase (U) (Adult Degree Completion Program)

0332 **Linguistics**
Albany*
Binghamton
Oswego

0333 **Literature**
Purchase

0136 **Medieval & Early Modern Studies**
Binghamton

0102 **Middle Childhood Education: English**
Buffalo State*
Fredonia*

0340 **Philosophy**
Albany*
Binghamton
Brockport
Buffalo State*
Fredonia*
Geneseo
New Paltz
Oneonta
Oswego
Plattsburgh
Potsdam
Purchase

0398 **Philosophy & Psychology**
Oswego

1065 **Philosophy & Religion**
Old Westbury

1585 **Professional Writing**
Cortland

1484 **Social Philosophy**
Cortland

1829 **Teaching English as a Second Language**
Cortland

1752 **Technology Studies**
Farmingdale

1950 **Women's & Gender Studies**
Plattsburgh
Potsdam

0741 **Women's Studies**
Albany*
Brockport
New Paltz
Oswego
Purchase

2020 **Writing**
Buffalo State*

Mathematics

0798 **Actuarial Mathematics**
Albany*

0126 **Adolescence Education: Mathematics**
Buffalo State*
Cortland
Fredonia*
Geneseo
New Paltz (T)
Old Westbury
Oneonta
Oswego
Plattsburgh (See also 1885)
Potsdam

0126 **Adolescence Education: Mathematics (Jointly registered with Columbia-Greene, Dutchess, Ulster)**
New Paltz (T)

0132 **Adolescence Education: Physics & Mathematics**
Cortland

1956 **Adolescence Mathematics Inclusive Education**
Brockport

0087 **Applied Mathematics**
Buffalo State
Farmingdale
Fredonia*
Oswego
SUNYIT

0334 **Mathematics**
Albany*
Binghamton
Brockport
Buffalo State
Cortland
Fredonia*
Geneseo
New Paltz
Old Westbury
Oneonta
Oswego
Plattsburgh
Potsdam

2275 **Mathematics (BA/MA Combined Degree Prog.)**
Potsdam

1885 **Mathematics/Adolescence Education (BA/MST Combined Degree Prog.)**
Plattsburgh

1726 **Mathematics/Computer Science**
Purchase

0107 **Middle Childhood Education: Mathematics**
Buffalo State*
Fredonia*
Old Westbury

1582 **Middle Childhood Specialist: Mathematics (Grades 5-9)**
Fredonia

0162 **Mathematical Economics**
Oswego

0355 **Statistics**
Oneonta

Physical Sciences

1952 **Adolescence Chemistry Inclusive Education**
Brockport

1953 **Adolescence Earth Science Inclusive Education**
Brockport

0128 **Adolescence Education: Chemistry**
Buffalo State*
Cortland
Fredonia*
Geneseo
New Paltz (T)
Old Westbury
Oneonta
Oswego
Plattsburgh (See also 1881)
Potsdam

0128 **Adolescence Education: Chemistry (Jointly registered with Columbia-Greene, Dutchess, Ulster)**
New Paltz (T)

0346 **Adolescence Education: Chemistry (Co-op with Syracuse)**
ESF

0131 **Adolescence Education: Earth Science**
Buffalo State*
Cortland
Fredonia*
Geneseo
New Paltz (T)
Oneonta
Oswego
Plattsburgh (See also 1883)
Potsdam

0131 **Adolescence Education: Earth Science (Jointly registered with Columbia-Greene, Dutchess, Ulster)**
New Paltz (T)

0129 **Adolescence Education: Physics**
Buffalo State*
Cortland
Fredonia*
Geneseo
New Paltz
Oneonta
Oswego
Plattsburgh (See also 1886)
Potsdam

1957 **Adolescence Physics Inclusive Education**
Brockport

2315 **Astronomy**
New Paltz

0311 **Atmospheric Science: Meteorology**
Albany*
Oneonta

0848 **Biophysics**
Geneseo

0316 **Chemistry**
Albany*
Binghamton
Brockport
Buffalo State*
Cortland
ESF
Fredonia*
Geneseo
New Paltz
Old Westbury
Oneonta
Oswego
Plattsburgh
Potsdam (BA/BS)
Purchase

1881 **Chemistry/Adolescence Education (BA/MST Combined Degree Prog.)**
Plattsburgh

0270 **Chemistry: ESF**
ESF

0320 **Earth Science**
Brockport
Buffalo State*
Fredonia*
Oneonta

1183 **Forensic Chemistry**
Buffalo State*

2023 **Forensic Science Technology**
Alfred State (J)

1746 **Environmental Geochemical Science**
New Paltz

0165 **Geochemistry**
Fredonia*
Geneseo
Oswego

0327 **Geology**
Binghamton
Brockport
Buffalo State*
Cortland
Fredonia*
New Paltz (T)
Oneonta
Oswego
Plattsburgh
Potsdam (BA/BS)

1883 **Geology/Adolescence Education (BA/MST Combined Degree Prog.)**
Plattsburgh

0378 **Geophysics**
Fredonia*
Geneseo

0369 **Mathematical Physics**
Fredonia*

0372 **Meteorology (See Atmospheric Science)**
Brockport
Oneonta
Oswego

1593 **Middle Childhood Education: Chemistry**
Buffalo State
Fredonia
Old Westbury

1837 **Middle Childhood Education: Earth Sciences**
Buffalo State

1838 **Middle Childhood Education: Physics**
Buffalo State

0342 **Physics**
Albany*
Binghamton
Brockport
Buffalo State*
Cortland
Fredonia*
Geneseo
New Paltz
Oneonta
Oswego
Plattsburgh
Potsdam

1886 **Physics/Adolescence Education (BA/MST Combined Degree Prog.)**
Plattsburgh

0379 **Physics: Applied**
Geneseo

0350 **Science: Interdisciplinary**
Potsdam

Pre-law & Pre-medicine

Neither Pre-law nor Pre-medicine is a major program of study. If you would like to attend law school or medical school, a host of options are available to you as an undergraduate. Law schools routinely accept students with degrees in the humanities and social sciences. Medical schools routinely accept students with degrees in the natural sciences. This is not to say you must major in one of these areas. You should consult with your academic advisor to determine your best course of study.

Psychology

1965 **Applied Psychology**
Canton
Cobleskill
Farmingdale (T)
Morrisville

1147 **Human Development**
Oswego

0234 **Human Development**
Binghamton (BA/BS)

0805 **Integrative Neuroscience**
Binghamton

0347 **Psychology**
Albany*
Binghamton
Brockport
Buffalo State*
Cortland
Fredonia*
Geneseo
New Paltz
Old Westbury
Oneonta
Oswego
Plattsburgh
Plattsburgh at Queensbury (U)
Potsdam
Purchase
SUNYIT

Public Affairs & Services

1359 **Criminal Investigation**
Canton

0287 **Criminal Justice**
Albany*
Brockport
Buffalo State*
Fredonia*
Morrisville
Oneonta
Plattsburgh
Plattsburgh at Queensbury (U)
Potsdam

2295 **Criminal Justice at Schenectady County CC**
Delhi (U)

2201 **Criminal Justice: Law Enforcement Technology**
Farmingdale

0810 **Criminology**
Cortland
Old Westbury

1808 **Expeditionary Studies**
Plattsburgh

2335 **Homeland Security**
Canton

0249 **Human Services**
Cortland (2+2)

2153 **Human Services Management**
Alfred State

1911 **Law Enforcement Leadership**
Canton

Bachelor's Degree Programs

Curricula represented here include degree programs (majors) only. In addition, most campuses offer concentrations, minors or other groupings of courses that could provide an excellent match for your interests. Every campus has talented and supportive staff and faculty to assist you as you search for a match between your interests and strengths and an academic degree program.

KEY: PROGRAMS BEGIN IN SEPTEMBER/JANUARY UNLESS OTHERWISE NOTED

- * Program also begins in June
- A Audition required
- E/W Evening/Weekend
- F Freshmen only
- J Sept entrance only - for information on starting in Jan, contact Admissions Office
- P Portfolio required
- S Sept entrance only
- T Transfers should contact school for requirements
- U Jr./Sr. transfers only (generally 48-72 credit hours required)

- 0818 Legal Studies**
Canton
- 0845 Outdoor Recreation**
Cortland
- 0310 Public Administration 4+1 Binghamton**
Cortland
- 0272 Public Justice**
Oswego
- 0139 Public Policy**
Albany*
- 0396 Recreation**
Brockport
Cortland
- 1915 Recreation Management**
Cortland
- 1319 Security Systems Administration**
Farmingdale
- 0298 Social Welfare: Social Work**
Albany*(T)
Brockport
Buffalo State*
Fredonia*
Plattsburgh
- 1916 Therapeutic Recreation**
Cortland

Social Sciences

- 0125 Adolescence Education: Social Studies**
Buffalo State*
Cortland
Fredonia*
Geneseo
New Paltz (T)
Old Westbury
Oneonta
Oswego
Plattsburgh (See also 1884)
Potsdam
- 0125 Adolescence Education: Social Studies (Jointly registered with Columbia-Greene, Dutchess, Ulster)**
New Paltz (T)
- 1958 Adolescence Social Studies Inclusive Education**
Brockport
- 0345 Afro-American & African Studies (Black Studies)**
Albany*
Binghamton
Brockport
Cortland
Geneseo
New Paltz

- 0301 Anthropology**
Albany*
Binghamton
Brockport
Buffalo State*
Cortland
Geneseo
New Paltz
Oneonta
Oswego
Plattsburgh
Potsdam
Purchase
- 1966 Applied Economics**
Farmingdale
- 1828 Applied Sociology**
Buffalo State
- 0793 Archaeology**
Cortland
Potsdam
- 1098 Child & Family Studies**
Oneonta
- 2293 Community & Behavioral Health**
SUNYIT
- 0322 Economics**
Albany*
Binghamton
Buffalo State*
Cortland
Fredonia*
Geneseo
New Paltz
Oneonta
Oswego
Plattsburgh
Potsdam
Purchase
- 1186 Geographic Information Systems (GIS)**
Cortland
- 0325 Geography**
Albany*
Binghamton
Buffalo State*
Cortland
Geneseo
New Paltz
Oneonta
Oswego
Plattsburgh
Potsdam
Purchase
SUNYIT
- 0133 Urban & Regional Analysis & Planning**
Buffalo State*
- 0329 History**
Albany*
Binghamton
Brockport
Buffalo State*
Cortland
Fredonia*
Geneseo
New Paltz
Old Westbury
Oneonta
Oswego
Plattsburgh
Potsdam
Purchase
- 1884 History/Adolescence Education (BA/MST Combined Degree Prog.)**
Plattsburgh
- 2320 International Development Studies**
Oneonta
- 0807 International Relations**
Geneseo
New Paltz
- 0844 International Studies**
Brockport
Cortland
Oneonta
Oswego
- 1621 Language & International Trade**
Oswego

- 0162 Mathematical Economics**
Oswego
- 0244 Media, Society & Art**
Purchase
- 0108 Middle Childhood Education: Social Studies**
Buffalo State*
Fredonia*
- 1182 Philosophy: Politics & Law**
Binghamton
- 0343 Political Science**
Albany*
Binghamton
Brockport
Buffalo State*
Cortland
Fredonia*
Geneseo
New Paltz
Oneonta
Oswego
Plattsburgh
Potsdam
Purchase
- 0393 Politics, Economics and Law**
Old Westbury
- 2014 Science, Technology & Society**
Morrisville
- 0352 Sociology**
Albany*
Binghamton
Brockport
Buffalo State*
Cortland
Fredonia*
Geneseo
New Paltz
Old Westbury
Oneonta
Oswego
Plattsburgh
Potsdam
Purchase
SUNYIT

Other Programs

- 0199 Early Admission Program (For students who complete Grade 11 prior to registration)**
Albany*
Binghamton
Brockport
Buffalo State
Canton
Cortland
ESF
Fredonia*
Geneseo
New Paltz
Oneonta
Oswego
Plattsburgh
Potsdam
Purchase (S)

ESF Guaranteed Transfer Program

High school students may apply through the ESF Guaranteed Transfer Admission (GTA) program for entry in their junior year. Those admitted under GTA are encouraged to attend one of the SUNY campuses that participates in the Pre-ESF advisement program. (Contact the campus to which you are applying directly for details on the admission process.) These colleges are:

- Alfred State (S)
- Broome
- Canton (S)
- Clinton
- Cobleskill
- Delhi
- Erie (Buffalo)
- Erie (Orchard Park)
- Erie (Williamsville)
- Fulton-Montgomery
- Herkimer
- Jamestown
- Monroe
- Morrisville (S)
- Nassau
- North Country
- Rockland
- Sullivan
- Westchester

- 0175 Time-Shortened Baccalaureate (Three-year degree program for students who graduate from high school prior to registration)**
Brockport (F)
Fredonia*
- 0111 Undergraduate Evening Program**
Oswego
Purchase (Adult Program)

SUNY Upstate Medical University Gold/Early Admission Program

If students are interested in an Early Admission/Guaranteed Transfer Program, they must apply to and be accepted by both SUNY Upstate Medical University and one of the affiliated colleges (see list below) during their senior year of high school.

Applicants should exhibit strong achievement in math and science and a commitment to the health professions. (Contact the campus to which you are applying directly for details.) The second two years of study will be completed at SUNY Upstate Medical University.

- Alfred State
- Broome
- Canton
- Clinton
- Cobleskill
- Cortland
- Delhi
- ESF
- Geneseo
- Herkimer
- Jamestown
- Monroe
- Morrisville
- North Country
- Oneonta
- Oswego
- Sullivan

Associate Degree Programs

Check out a few listings. For example, there is a wide variety of business (business administration, management, marketing, finance, etc.) and engineering disciplines. There may be similarities as well as differences from one curriculum heading to another. Contact any campus directly to get the specifics.

KEY: PROGRAMS BEGIN IN SEPTEMBER/JANUARY UNLESS OTHERWISE NOTED

- * Program also begins in June
- A Audition required
- E/W Evening/Weekend
- F Freshmen only
- J Sept entrance only - for information on starting in Jan, contact Admissions Office
- P Portfolio required
- S Sept entrance only
- T Transfers should contact school for requirements
- U Jr./Sr. transfers only (generally 48-72 credit hours required)

Business & Commerce Technologies

- 0630 **Accounting (AAS)**
Alfred State (J)
Broome
Canton
Clinton
Cobleskill
Delhi
Fulton-Montgomery*
Herkimer
Jamestown
Jamestown (Olean)
Mohawk Valley
Morrisville
- 1129 **Accounting (AS)**
Herkimer
Morrisville
- 1551 **Administrative Assistant**
Mohawk Valley
Sullivan
- 0576 **Building Management & Maintenance**
Erie (Buffalo)
Mohawk Valley
- 1180 **Business: Financial Services**
Broome
- 0632 **Business Administration (AAS)**
Canton
Clinton
Cobleskill
Delhi
Erie (Buffalo)
Erie (Orchard Park)
Erie (Williamsville)
Fulton-Montgomery*
Herkimer
Jamestown (Online degree also available)
Jamestown (Olean) (Online degree also available)
Morrisville
North Country
Sullivan
- 0671 **Business Administration (AS)**
Alfred State
Broome
Canton
Clinton
Cobleskill
Delhi
Erie (Buffalo)
Erie (Orchard Park)
Erie (Williamsville)
Fulton-Montgomery*
Herkimer
Jamestown
Jamestown (Olean)
Mohawk Valley
Morrisville
North Country
Sullivan
- 0407 **Business Administration: International Business**
Broome

- 1921 **Business Information Management**
Broome
- 1306 **Business Management (AAS)**
Alfred State
Mohawk Valley
- 1495 **Business Marketing Management & Sales (AAS)**
Broome
- 2266 **Business Technology & Applications**
Fulton-Montgomery
- 1939 **Communication Arts: New Media**
Herkimer
- 1173 **Communications**
Finger Lakes
Jamestown
Jamestown (Olean)
- 0501 **Communications & Media Arts**
Broome (S)
Erie (Orchard Park)
Sullivan
- 2258 **Computer Graphics & Design**
North Country
- 0647 **Court & Realtime Reporting**
Alfred State (Internet program also available)
- 0578 **Culinary Arts**
Alfred State (S) (AOS)
Cobleskill (AOS)
Delhi
Erie (Buffalo) (S)
Erie (Williamsville)
Mohawk Valley (AOS)
Sullivan (AOS)
- 0423 **Culinary Arts: Baking Production Management**
Alfred State (S) (AOS)
- 1362 **Entrepreneurship**
Alfred State
Genesee
- 2325 **Entrepreneurship Management**
North Country
- 0652 **Fashion Merchandising Management**
Herkimer
- 0641 **Financial Services**
Alfred State
Broome
- 1817 **Financial Services Management**
Mohawk Valley
- 0570 **Food Service Administration**
Morrisville
- 0573 **Food Service Administration: Dietetic Technician-Nutrition Care**
Erie (Williamsville) (S)
Morrisville
- 0572 **Food Service Administration: Restaurant Management**
Cobleskill
Mohawk Valley
Morrisville
- 1361 **Gaming & Casino Management**
Morrisville
- 0677 **Graphic Arts & Printing: Visual Communications Technology**
Erie (Orchard Park) (S)
Fulton-Montgomery
- 1461 **Graphic Communications: Sales & Marketing**
Fulton-Montgomery*
- 0436 **Graphic Design: Computer Graphics**
Sullivan

- 0693 **Health Services Management**
Herkimer
- 1730 **Hospitality Management**
Sullivan
- 0644 **Hospitality & Tourism**
Sullivan
- 0582 **Hotel & Resort Management**
Delhi
- 0533 **Hotel & Restaurant Management**
Broome
Erie (Williamsville)
- 1253 **Hotel Technology: Meeting Services Management**
Mohawk Valley
- 1325 **Human Resource Management**
Herkimer
- 1363 **International Business**
Herkimer
- 2092 **Journalism Studies**
Morrisville
- 0633 **Marketing**
Alfred State
Delhi
Herkimer
Sullivan (AAS)
- 2322 **Media Communication**
Fulton-Montgomery
- 0558 **Media Marketing & Management**
Mohawk Valley
- 2200 **Medical Office Administration**
Morrisville
- 1906 **Office Administration**
Broome
Morrisville
- 1905 **Office Administration: Management**
Morrisville
- 0637 **Office Management**
Erie (Buffalo)
Erie (Orchard Park)
Erie (Williamsville)
- 0667 **Office Technologies**
Jamestown
Jamestown (Olean)
North Country
- 0457 **Office Technology: Information Processing**
Morrisville
- 0691 **Paralegal**
Broome
Erie (Buffalo)
Herkimer
- 1975 **Pastry Arts**
Sullivan (AOS)
- 1036 **Photographic Technology**
Herkimer
- 0660 **Photography**
Mohawk Valley
- 0471 **Professional Chef**
Sullivan (AAS)
- 11494 **Professional Pilot**
Jamestown
- 0685 **Radio & Television Broadcasting**
Herkimer
- 1003 **Restaurant & Food Service Management**
Delhi
- 1157 **Small Business Management**
Herkimer
- 2256 **Sports and Events Management**
North Country (Saranac Lake Campus only)
- 1396 **Sports Management**
Alfred State
- 1795 **Tourism & Hospitality Management**
Sullivan

- 0680 **Travel & Tourism**
Delhi
Morrisville
 - 1831 **Travel & Tourism: Hospitality & Events Management**
Herkimer
 - 2257 **Wilderness Recreation Leadership**
North Country (Saranac Lake Campus only)
- Computer Technologies**
- 1602 **Computer Engineering Technology**
Alfred State (J)
 - 1626 **Computer Graphics/Graphic Design (AAS)**
Sullivan
 - 0581 **Computer Information Systems (AAS)**
Alfred State
Broome
Canton
Clinton
Cobleskill
Delhi
Erie (Buffalo) (Jan)
Fulton-Montgomery*
Jamestown (Online degree also available)
Jamestown (Olean) (Online degree also available)
Morrisville
Sullivan
 - 1171 **Computer Information Systems (AS)**
Morrisville
 - 0629 **Computer Information Systems: Microcomputers Technician**
Mohawk Valley
 - 1365 **Computer Network Technician**
Herkimer
 - 0495 **Computer Repair Technology**
Erie (Orchard Park) (S)
 - 0532 **Computer Science**
Alfred State
Broome
Erie (Williamsville)
Fulton-Montgomery*
Jamestown (Online degree also available)
Jamestown (Olean) (Online degree also available)
Mohawk Valley
Morrisville
 - 1925 **Computer Security & Forensics**
Broome
 - 0405 **Computer Systems Technology**
Morrisville
 - 1775 **Computer Support Specialist**
Herkimer
 - 0559 **Computer Technology**
Broome
Clinton
Fulton-Montgomery (S)(T)
 - 0591 **Data Processing, Programming & Systems**
Mohawk Valley
 - 1492 **Information Technology**
Erie (Buffalo)
Erie (Orchard Park)
Erie (Williamsville)
Jamestown (Online degree also available)
Jamestown (Olean) (Online degree also available)
 - 1695 **Web Development & Information Design**
Mohawk Valley
 - 1526 **Website & E-Business Development**
Herkimer

- Fine & Applied Arts**
- 1443 **Art Studies**
Herkimer (AA)
 - 1696 **Digital Animation (AAS)**
Mohawk Valley
 - 1212 **Digital Media & Animation**
Alfred State (J)
 - 0664 **Fine Arts**
Fulton-Montgomery*
Herkimer
Mohawk Valley
 - 2255 **Fine Arts - Studio**
North Country
 - 1218 **Graphic Arts Technology**
Mohawk Valley
 - 1217 **Graphic Communications: Graphic Design**
Mohawk Valley
 - 1219 **Graphic Communications: Illustration**
Mohawk Valley
 - 1390 **Graphic Design Technology**
Cobleskill
 - 1732 **Media Arts**
Jamestown
Delhi
 - 1388 **Multimedia**
Fulton-Montgomery
 - 0682 **Music**
Broome
Jamestown
 - 2032 **Music Industry**
Herkimer
 - 1036 **Photographic Technology**
Herkimer
 - 0660 **Photography**
Mohawk Valley
 - 1445 **Studio Arts**
Jamestown
 - 0695 **Theatre Arts**
Fulton-Montgomery

- Health Services & Paramedical Technology**
- 1070 **Chemical Dependency Counseling**
Broome
North Country
 - 2188 **Clinical Laboratory Technician**
Broome*
Erie (Williamsville) (S)
 - 0545 **Dental Hygiene**
Broome (S)
Canton (Classes held at Mohawk Valley's Rome campus)
Erie (Williamsville) (S)
Farmingdale (S)(T)
 - 0547 **Dental Laboratory Technology**
Erie (Orchard Park) (S)
 - 1970 **Emergency Medical Services/Paramedic**
Mohawk Valley (T)
(Professional Certification required prior to enrollment)
 - 1293 **Emergency Medical Technology: Paramedic (See 1894)**
Broome (S)
Erie (Orchard Park)
Herkimer
 - 1969 **Health Information Technology**
Alfred State (Internet program available)
 - 1117 **Health Information Technology: Medical Records**
Broome (S)
Erie (Williamsville) (S)
Jamestown (1+1)
Jamestown (Olean) (1+1)
 - 1451 **Health Related Studies**
Morrisville

Associate Degree Programs

Visit www.suny.edu/student to find links to each SUNY campus Web site, the online undergraduate application, and information about the financial aid application process. An academic program search tool can also be found at www.suny.edu/student.

KEY: PROGRAMS BEGIN IN SEPTEMBER/JANUARY UNLESS OTHERWISE NOTED

* Program also begins in June
A Audition required
E/W Evening/Weekend
F Freshmen only
J Sept entrance only - for information on starting in Jan, contact Admissions Office
P Portfolio required
S Sept entrance only
T Transfers should contact school for requirements
U Jr./Sr. transfers only (generally 48-72 credit hours required)

1968 Health Studies: Radiologic Technology
 Mohawk Valley (T)
 (Professional Certification required prior to enrollment)

2083 Histotechnician
 Cobleskill

1342 Massage Therapy
 Morrisville
 North Country (S)
 (Saranac Lake Campus only)

1176 Medical Administrative Assistant (AAS)
 Fulton-Montgomery

0574 Medical Assistant
 Broome (S)
 Sullivan

1967 Medical Assisting
 Mohawk Valley

0600 Medical Laboratory Technology
 Farmingdale

0602 Medical Office Assistant
 Erie (Williamsville) (S)

1664 Medical Office Technology (AAS)
 Jamestown
 Jamestown (Olean)

0883 Medical Technology 2+2 w/Upstate Medical (See Gold Program p. 40)
 Broome (S)
 Canton

0541 Mental Health Assistant: Alcohol Counseling
 Erie (Buffalo) (S)

0622 Nursing
 Alfred State (J)
 Broome (S)
 Canton
 Clinton (S)
 Delhi (S)
 Erie (Buffalo) (Jan)
 Erie (Williamsville)
 Fulton-Montgomery (S)(T)
 Jamestown (S)(T)
 Jamestown (Olean) (S)(T)
 Mohawk Valley (S)
 Morrisville
 North Country (S)
 Sullivan (S)

1014 Nutrition & Dietetics
 Mohawk Valley

0665 Occupational Therapy Assistant
 Erie (Williamsville) (S)
 Jamestown (S)(T)

0549 Ophthalmic Dispensing
 Erie (Williamsville) (S)

1894 Paramedic
 Cobleskill

1485 Physical Education Studies
 Delhi
 Erie (Buffalo)
 Erie (Orchard Park)
 Erie (Williamsville)
 Finger Lakes
 Jamestown
 Sullivan

0489 Physical Therapist Assistant
 Broome (S)
 Canton
 Herkimer (S)

0628 Radiologic: X-Ray Technology
 Broome (S)
 Fulton-Montgomery (S)
 North Country (S)
 (Saranac Lake Campus only)

0669 Radiotherapy Technology: Radiologic Technology
 Erie (Buffalo) (S)

0440 Respiratory Care
 Erie (Williamsville) (S)
 Mohawk Valley

0432 Respiratory Care 2+2 with Upstate Medical (See Gold Program p. 40)
 Alfred State
 Broome (S)
 Canton

1450 Sports, Nutrition & Fitness Management
 Morrisville

Interdisciplinary Studies

1173 Communications
 Jamestown
 Jamestown (Olean)

0688 Individual Studies
 Alfred State
 Broome
 Canton
 Clinton
 Delhi
 Fulton-Montgomery (S)
 Jamestown (Online degree also available)
 Jamestown (Olean) (Online degree also available)
 Mohawk Valley
 Morrisville
 North Country

Liberal Arts & Sciences

1173 Communications
 Cobleskill

2191 Digital Filmmaking
 Herkimer

2194 Educational Sign Language Interpretation
 Mohawk Valley

2061 Environmental Science
 Erie (Williamsville)
 Jamestown
 North Country

2241 Environmental Technology Geoscience
 Erie (Williamsville)

2192 Gender Studies
 Herkimer

1130 Health, Physical Education & Recreational Transfer
 Fulton-Montgomery

1821 Health Science Studies
 Cobleskill

0635 Liberal Arts & Sciences
 Broome (AA/AS)
 Farmingdale
 Sullivan (AA/AS)

1804 Liberal Arts & Sciences: Adolescence Education (Teacher Education Transfer)
 Alfred State
 Delhi
 Fulton-Montgomery
 Jamestown
 Jamestown (Olean)
 Mohawk Valley
 Morrisville

1773 Liberal Arts & Sciences: Childhood Education (Teacher Education Initiative)
 Herkimer

1802 Liberal Arts & Sciences: Childhood Education (Teacher Education Transfer)
 Delhi
 Erie (Buffalo)
 Fulton-Montgomery
 Jamestown
 Jamestown (Olean)
 Mohawk Valley
 Morrisville

1855 Liberal Arts & Sciences: Criminal Justice Studies
 Delhi

1803 Liberal Arts & Sciences: Early Childhood Education (Teacher Education Transfer)
 Delhi
 Fulton-Montgomery
 Jamestown (Olean)
 Morrisville

2009 Liberal Arts & Sciences: Environmental Studies
 Delhi

0250 Liberal Arts & Sciences: General Studies
 Broome
 Canton
 Erie (Buffalo)
 Erie (Orchard Park)
 Erie (Williamsville)
 Fulton-Montgomery*
 Herkimer
 Mohawk Valley

1395 Liberal Arts & Sciences: General Studies (AA)
 Delhi

1394 Liberal Arts & Sciences: General Studies (AS)
 Delhi

0201 Liberal Arts & Sciences: Humanities
 Alfred State
 Cobleskill
 Herkimer
 Jamestown
 Jamestown (Olean)
 Sullivan

1616 Liberal Arts & Sciences: Humanities/Early Childhood (B-2) (AA) (Jointly registered with New Paltz)
 Sullivan

1120 Liberal Arts & Sciences: Humanities & Social Science
 Adirondack
 Clinton
 Delhi
 Mohawk Valley
 Morrisville
 North Country

1166 Liberal Arts & Sciences: International Studies
 Mohawk Valley

0221 Liberal Arts & Sciences: Mathematics
 Cobleskill

0645 Liberal Arts & Sciences: Mathematics & Science
 Alfred State
 Clinton
 Delhi
 Jamestown
 Jamestown (Olean)
 Mohawk Valley
 Morrisville
 North Country

1771 Liberal Arts & Sciences: Psychology
 Mohawk Valley

1698 Liberal Arts & Sciences: Public Policy
 Mohawk Valley

0220 Liberal Arts & Sciences: Science
 Cobleskill
 Dutchess
 Fulton-Montgomery
 Herkimer
 Schenectady*
 Ulster

0212 Liberal Arts & Sciences: Social Science
 Alfred State
 Cobleskill
 Herkimer
 Jamestown
 Jamestown (Olean)

1699 Liberal Arts & Sciences: Theater
 Mohawk Valley

2032 Music Industry
 Herkimer

1087 Physical Education
 Herkimer

1396 Sports Management
 Alfred State

Mechanical & Engineering Technologies

0512 Agricultural Engineering Technology
 Morrisville

0506 Agricultural Engineering Technology: Agricultural Power Machinery
 Cobleskill

0527 Agricultural Mechanics: Agricultural Engineering Technology
 Morrisville

0444 Air Conditioning Engineering Technology
 Canton

0464 Air Conditioning & Heating Technology
 Alfred State (S)

0491 Air Conditioning Technology: Refrigeration
 Mohawk Valley

0428 Aircraft Maintenance: Mechanical Technology
 Mohawk Valley (T)

0473 Apprentice Training: Industrial Trades
 Canton

0443 Architectural Engineering Technology
 Alfred State (J)

1755 Architectural Studies & Design
 Morrisville

0538 Architectural Technology
 Delhi

0453 Autobody Repair
 Alfred State (S)
 Erie (Orchard Park) (S)

2054 Autobody Technology
 Morrisville

0411 Automotive Mechanics (AOS)
 Delhi (freshmen fall start only)

0451 Automotive Service Technician
 Alfred State

1393 Automotive Technology (AAS)
 Delhi (S)

0525 Automotive Technology
 Canton
 Erie (Orchard Park) (S)
 Farmingdale
 Fulton-Montgomery (S)(T)
 Morrisville

0420 Building Construction: Building Trades
 Alfred State (S)

1337 CAD/CAM Technology
 Alfred State (J)

1392 Carpentry (AAS)
 Delhi (S)

0503 Carpentry & Building Trades (AOS)
 Delhi (Freshmen fall start only)

0517 Civil Engineering Technology
 Broome
 Canton
 Erie (Williamsville)
 Mohawk Valley

2270 Computer-Aided Design Technology
 Morrisville

1713 Computer-Aided Drafting (AOS)
 Mohawk Valley

1043 Computer-Aided Drafting & Design (CADD)
 Delhi (S)

2202 Computer-Aided Drafting & Design Technology
 Erie (Orchard Park)

1602 Computer Engineering Technology
 Alfred State (J)

1788 Construction Management Engineering Technology
 Erie (Williamsville)

0577 Construction Engineering Technology
 Alfred State (J)

0540 Construction Technology
 Delhi
 Erie (Williamsville)
 Fulton-Montgomery (S)(T)

1162 Construction Technology Management
 Canton

0672 Diesel Technology
 Cobleskill
 Morrisville

1604 Diesel Technology (AOS)
 Morrisville

1655 Digital Computer Technology (AAS)
 Jamestown

1212 Digital Media & Animation
 Alfred State (J)

0450 Drafting: CAD
 Alfred State (S)

0419 Drafting: CAD Model Building & Process Piping Drawing
 Alfred State (S)

0418 Drafting: CAD Technical Illustration
 Alfred State (S)

0504 Drafting: Mechanical
 Erie (Orchard Park) (S)

1926 Electrical Construction & Instrumentation (Jointly registered with Tri-City Joint Apprenticeship and Training)
 Delhi

1642 Electrical Construction & Instrumentation (AAS)
 Delhi (Freshmen fall start only)

1151 Electrical Construction & Instrumentation (AOS)
 Delhi (S)

0498 Electrical Construction & Maintenance Electrician (AAS)
 Alfred State (S)

1152 Electrical Construction & Plumbing (AOS)
 Delhi (S)

1153 Electrical Construction & Refrigeration (AOS)
 Delhi (S)

0699 Electrical Engineering Technology Alfred State (J) Broome Canton Erie (Williamsville) Mohawk Valley	2303 Renewable Energy Technologies Clinton	1414 Environmental Analysis: Chemical Technology Mohawk Valley	1328 Child & Family Services Cobleskill	1723 Records: Information Management Broome
0460 Electrical Service Technician Mohawk Valley	2098 Renewable Energy Technology Morrisville	1843 Environmental & Natural Resources Conservation ESF (S) Morrisville	1925 Computer Security & Forensics Broome	1712 Recreation & Leisure Services Mohawk Valley
1566 Electrical Service Technician: Fiber Optics (AOS) Mohawk Valley	0463 Residential Construction Morrisville	2061 Environmental Science Broome Erie (Williamsville) North Country	2326 Criminal Justice (AA) Clinton	1565 Recreation & Sports Management Delhi
0555 Electrical Technology Adirondack (S)(T) Broome Fulton-Montgomery (S)(T)	1962 School Facilities Management Mohawk Valley (Online only)	1016 Environmental Studies Cobleskill Sullivan (AS)	1100 Criminal Justice (AAS) Fulton-Montgomery Herkimer Mohawk Valley Morrisville North Country	0609 Recreation Leadership Erie (Orchard Park) (S)
2102 Electrical Technology: Electronics Clinton	1700 Semiconductor Manufacturing Technology (AAS) Mohawk Valley	2193 Environmental Technology Alfred State (J) Clinton	2279 Criminal Justice (AS) Erie (Buffalo) Erie (Orchard Park) Erie (Williamsville) Fulton-Montgomery Herkimer Jamestown (Olean) Mohawk Valley	0466 Recreation Leadership: Sports Management Sullivan
0557 Electromechanical Engineering Technology Alfred State (J) Broome	1039 Surveying Engineering Technology Alfred State (J)	0516 Fisheries & Wildlife Technology Cobleskill	1544 Criminal Justice: Corrections Broome (AS) Sullivan (AAS)	0462 Sports & Recreation Management Herkimer
0530 Engineering Science (University Parallel) Alfred State (J) Broome Canton Erie (Williamsville) Finger Lakes (S)(T) Fulton-Montgomery (S)(T) Jamestown Mohawk Valley	0543 Surveying Technology Mohawk Valley	0471 Food Service: Professional Chef Sullivan	2265 Criminal Justice: Crime & Intelligence Analysis Herkimer	Other Programs SUNY Upstate Medical University Gold Program If students are interested in an Early Admission/Guaranteed Transfer Program, they must apply to and be accepted by both SUNY Upstate Medical University and one of the affiliated colleges (see list below) during their senior year of high school. Applicants should exhibit strong achievement in math and science and a commitment to the health professions. (Contact the campus to which you are applying directly for details.) The second two years of study will be completed at SUNY Upstate Medical University. Alfred State Broome Canton Clinton Cobleskill Cortland Delhi ESF Geneseo Herkimer Jamestown Mohawk Valley Monroe Morrisville North Country Oneonta Oswego Sullivan
2208 General Technology Canton	1022 Telecommunications Technology Erie (Orchard Park)	0620 Forest Technology ESF (S)	1734 Criminal Justice: Cybersecurity Herkimer	
2314 Geospatial Technology Mohawk Valley	1179 Telecommunications Technology: Verizon Broome Canton Erie (Orchard Park) Mohawk Valley	0620 Forest Technology with ESF (all 1+1) (Check with campuses below to confirm first-year program of study) Alfred State (J) Canton Clinton Delhi (S) ESF (S) Jamestown Jamestown (Olean) Mohawk Valley Morrisville	1454 Criminal Justice: Economic Crime Herkimer	
2282 Green Building Maintenance & Management Sullivan	1643 Welding Technology (AAS) Delhi (Freshmen fall start only) Jamestown	1063 Golf Course Operations Delhi	1329 Criminal Justice: Forensic Investigations Herkimer	
1486 Heating, Ventilating & Air Conditioning Delhi (Freshmen fall start only)	0666 Welding Technology (AOS) Alfred State (S) Delhi (Freshmen fall start only) Mohawk Valley	0610 Horticulture Delhi Farmingdale Morrisville	1035 Criminal Justice: Law Enforcement Erie (Williamsville) Farmingdale	
1908 Heavy Equipment Operations Alfred State (S)	0402 Welding Technology: Pipefitting (AOS) Delhi (S)	1600 Landscape Architectural Studies Morrisville	0640 Criminal Justice: Police Broome (AAS) Canton (AAS) Clinton (AAS) Jamestown (AAS) Jamestown (Olean) (AAS)	
0452 Heavy Equipment, Truck & Diesel Technician Alfred State	2101 Wind Energy & Turbine Technology Clinton	0638 Landscape Design & Management Delhi	1327 Early Childhood (AAS) Broome Canton (AS) Cobleskill Erie (Buffalo) Fulton-Montgomery Herkimer Morrisville	
0583 Industrial Technology Broome Clinton Erie (Williamsville)	Natural Science Technologies	0611 Landscape Development Cobleskill Farmingdale	1741 Emergency Management Erie (Buffalo) Sullivan	
2310 Integrated Energy Systems Delhi (S)	0511 Agricultural Business Alfred State Cobleskill Morrisville	0617 Natural Resources Conservation Morrisville	0639 Fire Protection Technology Broome Erie (Orchard Park) (S) (evenings only) Mohawk Valley (for Utica Fire Academy graduates only)	
1825 Land Surveying Technology ESF	0514 Agricultural Science Cobleskill Morrisville	0611 Ornamental Horticulture: Landscape Development Cobleskill Farmingdale	2060 Homeland Security Broome	
0551 Machine Tool Technology Alfred State (S)	2297 Agriculture: Animal Industry Cobleskill	0646 Ornamental Horticulture: Nursery Management Cobleskill	0604 Human Services (AAS) Clinton Fulton-Montgomery (S) Herkimer Jamestown Jamestown (Olean) Mohawk Valley Morrisville North Country	
0596 Manufacturing Technology Mohawk Valley	0510 Agriculture Technology Alfred State	2206 Sustainable Crop Production Cobleskill	1175 Human Services (AS) Alfred State Broome Fulton-Montgomery (AA) Jamestown Jamestown (Olean) Sullivan	
0401 Masonry Alfred State (S)	0561 Animal Science: Beef & Livestock Studies Cobleskill	0613 Turf Management Cobleskill Delhi	0541 Mental Health Assistant: Alcohol Counseling Erie (Buffalo) (S)	
1336 Mechanical Design Engineering Technology Alfred State (J)	0562 Animal Science: Dairy Morrisville	0521 Veterinary Science Technology Alfred State (J) Canton Delhi (S)	1564 Park & Outdoor Recreation Delhi	
0493 Mechanical Engineering Technology Alfred State (J) Broome Canton Erie (Williamsville) Farmingdale Mohawk Valley Morrisville	0507 Animal Science: Dairy Production & Management Cobleskill	0618 Wood Products Technology Morrisville	2080 Police Science Erie (Williamsville)	
0595 Mechanical Technology Jamestown	0698 Animal Science: Equine Racing Management Morrisville	Public Service Related Technologies	2013 Public Safety Technology: Fire Science Jamestown	
1619 Motorsports Technology (AOS) Alfred State (S)	0687 Animal Science: Equine Science & Management Morrisville	1563 Adventure Recreation Delhi		
1158 Plumbing & Electrical Instrumentation (AOS) Delhi (S)	0518 Animal Science: Equine Studies Cobleskill	1921 Business Information Management Broome		
1159 Plumbing & Refrigeration (AOS) Delhi (S)	1020 Aquaculture & Aquatic Science Morrisville	1070 Chemical Dependency Counseling Broome North Country		
1160 Refrigeration & Instrumentation Delhi (S)	1554 Biological Science Alfred State (J)	1711 Chemical Dependency Practitioner (AAS) Mohawk Valley		
	0614 Biological Technology Cobleskill			
	1211 Biotechnology Jamestown Jamestown (Olean)			
	0535 Chemical Technology Mohawk Valley			
	0423 Culinary Arts: Baking Production & Management Alfred State (S) (AOS)			

You cannot apply to Nassau, Rockland or Westchester using the SUNY application. Please see your agent for further instructions.

Certificate Programs

You can check to determine if your online application has been received at the SUNY Application Services Center at www.suny.edu/applySUNY.

KEY: PROGRAMS BEGIN IN SEPTEMBER/JANUARY UNLESS OTHERWISE NOTED

- * Program also begins in June
- A Audition required
- E/W Evening/Weekend
- F Freshmen only
- J Sept entrance only - for information on starting in Jan, contact Admissions Office
- P Portfolio required
- S Sept entrance only
- T Transfers should contact school for requirements
- U Jr./Sr. transfers only (generally 48-72 credit hours required)

0932 Accounting Farmingdale (U)	1671 Coding & Reimbursement Specialist Alfred State (Internet program available)	1243 Electronic Technician Mohawk Valley	0035 Industrial & Commercial Electricity Mohawk Valley	0966 Paralegal Assistant Dutchess
0903 Accounting Studies Sullivan	2260 Community Residence Aide North Country	0954 Electronics Fulton-Montgomery (S)	0988 Industrial Technology Broome	1818 Payroll Clinton
2111 Administrative Assistant Mohawk Valley	2323 Computed Tomography (Non-Clinical) Broome (U)	2186 Emergency Medical Services Provider Erie (Orchard Park)	1108 Information Processing Jamestown	0905 Phlebotomist Broome
2079 Advanced Police Science Erie (Williamsville) (Restricted to Police Officers who have completed the Police Basic Training Certificate and Academy.)	1681 Computer-Aided Design & Computer Numerical Control Jamestown	2249 Energy Utility Technology Erie (Williamsville)	2144 Information Systems Sullivan	0962 Photography Mohawk Valley
0912 Agricultural Mechanics Morrisville	1167 Computer-Aided Drafting Mohawk Valley	1693 English as a Second Language Mohawk Valley	1931 Information Systems Security Erie (Williamsville)	1827 Police Basic Training Erie (Williamsville)
1387 Air Conditioning Maintenance & Repair Canton	1787 Computer Applications for the Office Erie (Williamsville)	1192 Entrepreneurship Alfred State	1498 Information Technology Jamestown	0938 Practical Nursing Canton
1919 Airframe & Powerplant Technology Mohawk Valley (Program begins August, December & April)	1334 Computer Graphics & Design North Country	2240 Entrepreneurship (Online Degree) Jamestown	1232 Insurance Mohawk Valley	1368 Psychology of the Workplace Jamestown
1819 Alcohol/Substance Abuse Counseling Clinton	0953 Computer Information Systems Farmingdale	1228 Finance Mohawk Valley	2247 Law Enforcement Supervisor Jamestown (Part-time)	2012 Public Safety Technology: Fire Science Jamestown
1971 Allied Health Care Mohawk Valley	2143 Computer: Office Applications Sullivan	0907 Financial Services Clinton	1658 Law Enforcement Technology Jamestown	1407 Purchasing Broome
1415 Baking & Pastry Arts Erie (Buffalo)	2187 Computer Security and Investigation/Digital Forensics Erie (Williamsville)	0918 Fire Protection Technology Broome	2145 Legal Office Assistant Sullivan	1248 Refrigeration Mohawk Valley
2150 BioManufacturing Erie (Williamsville)	2327 Computer Support Clinton	0010 Food Service Sullivan	1310 Linear Electronics & Communications Farmingdale	2304 Renewable Energy Technologies Clinton
1859 Biotechnology Jamestown (1+1) Jamestown (Olean) (1+1)	1596 Computer Systems Specialist Fulton-Montgomery	0926 General Automotive Services Fulton-Montgomery	2027 Machine Tool Technology Jamestown	1963 School Facilities Management Mohawk Valley (Online only)
0977 Building Trades/Residential Light Commercial Erie (Buffalo) (S)	1497 Computer Systems Technology Farmingdale	0985 General Education Fulton-Montgomery	1247 Machinist Technology Mohawk Valley	2028 Sciences for the Health Professions Farmingdale (U) (Bachelor's degree required for admission)
0916 Business Broome	1660 Corrections Officer Technology Jamestown	0986 General Studies Jamestown	1308 Management Farmingdale (U)	0933 Small Business Management Herkimer
2267 Business Applications Specialist Fulton-Montgomery	2152 Court Reporting & Captioning Alfred State	1470 Geographic Information Systems (GIS) Erie (Williamsville)	1227 Managerial Accounting Mohawk Valley	0040 Spanish Old Westbury*
1090 Business Studies Sullivan	1933 Crime Scene Technology Erie (Buffalo)	1345 Gerontology North Country	1311 Manufacturing Methods Farmingdale	0038 Special Studies Jamestown
0923 Cabinetmaking Delhi (Freshmen fall only start)	0947 Criminal Justice Broome	1356 Graphic Communications Mohawk Valley	1404 Manufacturing Resources Management Broome	1234 Supervisory Management Mohawk Valley
1250 Carpentry & Masonry Mohawk Valley	1753 Criminal Justice Studies Canton (J)	2190 Green Building Technology Erie (Buffalo)	1307 Marketing Farmingdale (U)	1972 Surgical Technician Mohawk Valley
1200 Casino Careers: Professional Development Morrisville	2048 Cybersecurity Mohawk Valley	11774 Health Science Career Studies Canton	1229 Media, Marketing & Management Mohawk Valley	1242 Surveying Mohawk Valley
1867 Casino Gaming Machine Repair Technician Erie (Orchard Park)	1353 Dental Assisting Erie (Williamsville) (S)	2259 Health Sciences North Country	0980 Medical Office Practice Erie (Williamsville)	1330 Teaching Assistant Erie (Buffalo)
1251 Chef Training Mohawk Valley	1920 Desktop Publishing Broome	1299 Health Studies Clinton	1665 Medical Office Technology Jamestown	1548 Tourism Sullivan
1469 CNC Machinist Mohawk Valley	0969 Dietary Manager Broome	0961 Heating & Air Conditioning Mohawk Valley	0062 Medical Transcriptionist Broome	1770 Transportation Management (Online only) Mohawk Valley
2081 CNC Precision Machining Erie (Williamsville)	1781 Digital Audio Production Jamestown	1949 Heating & Plumbing Service Canton	1632 Motorsports Performance & Repair Canton	1846 Web Design Jamestown
1164 Coaching Mohawk Valley	1309 Digital Electronics & Microprocessors Farmingdale	2239 Heating, Ventilating, Air Conditioning & Refrigeration Erie (Williamsville)	1389 Multimedia Fulton-Montgomery	1670 Web Network Technology Erie (Williamsville)
	1782 Digital Graphic Design & Publishing Jamestown	2324 Histological Technician Broome (U)	1785 Multimedia Production Jamestown	1418 Web Page Design Erie (Orchard Park)
	21782 Digital Graphic Design & Publishing Jamestown	1932 Homeland Security Erie (Buffalo)	1507 Network Administration Jamestown	1406 Website Development & Management Broome
	1399 Direct Care Practice Sullivan (Part-time only)	0949 Human Services Broome	1427 Network Administrator Ulster	0712 Welding Mohawk Valley
	0968 Early Childhood Broome	Erie (Orchard Park)	0939 Office Assistant Erie (Buffalo)	1922 Welding Technology Jamestown
	Fulton-Montgomery	0987 Individual Studies Canton	0981 Office Technology Broome	2273 Wind Turbine Service Technician Clinton
	Jamestown	Fulton-Montgomery	Jamestown	0996 Word Processing Morrisville
	Jamestown (Olean)	Jamestown	Jamestown (Olean)	
	1870 Early Childhood Care & Development Clinton	Jamestown (Olean)	North Country	
	0955 Electrical Construction Maintenance Canton	1588 Individual Studies: Allied Health Mohawk Valley	2029 Overhead Electric Line Worker Hudson Valley (S)	
	2016 Electricity/Electronics Jamestown	1589 Individual Studies: Business & Industry Mohawk Valley	0914 Ornamental Horticulture Farmingdale	

You cannot apply to Nassau, Rockland or Westchester using the SUNY application. Please see your agent for further instructions.

Frequently Asked Questions

About SUNY

Q: How many international students are currently studying at SUNY campuses?

A: In 2011 there were nearly 23,000 international students (out of approximately 468,000 students total). The specific international enrollment numbers can be found on each campus' website.

Q: Where do most international students come from?

A: Korea, China, Singapore, Canada, India and 160 other countries around the world, which ensures a big diversity in the SUNY system.

Q: What are the semester dates?

A: Semester dates vary between campuses, but most orientation programs start in mid- or late August with classes beginning soon after. Typical dates are:

- Fall semester: August/September-December
- Mid-year break: Late December-mid-late January
- Spring semester: Mid-late January-May
- Summer break: May/June-late August

Q: Can international students attend community college at SUNY?

A: Yes. You can transfer to a four-year SUNY campus or to a variety of other public and private colleges and universities after successfully completing two years of studies at the community college.

Services for International Students

Q: English is not my native language. Is language support available at SUNY?

A: Yes. Please see the *Studying English at SUNY* page in this prospectus for more information.

Q: Does SUNY have an orientation program for international students?

A: Yes. All SUNY campuses have orientation programs for new students, with special sessions or complete programs for international students.

Q: What types of housing options are available for international students?

A: International students have access to all residence options, including single rooms, shared rooms and suite-style housing, and they live among American students and other international students.

Q: How do I apply for a student visa?

A: After you are admitted to a SUNY campus, you will receive an admission packet with instructions and the documentation needed to apply for a student visa at a U.S. Embassy or Consulate in your home country. For detailed instructions on the visa application process in your country, visit the web site of the U.S. Embassy or Consulate. All websites are listed as www.usembassy.gov.

Applying to SUNY

Q: How do I apply?

A: Apply online at www.suny.edu/gosuny. Send your supporting documents to the campuses where you have applied. If you are working with a SUNY agent, please note this on the online application form when you select which campus you are applying to.

Q: Is there a fee to apply to SUNY?

A: Yes, there is a non-refundable application fee for each campus choice. The application fee must be paid before the application can be processed.

Q: When is the deadline to apply?

A: If you are a first-year student (freshman) it is recommended that you apply by December 1 to improve your chances of being accepted to your major of choice and find housing on campus. Some campuses have specific application deadlines for certain programs of study. Transfer applications are reviewed throughout the year. Be sure to contact your local SUNY representative or campus directly to get deadline information for supplemental application, auditions, art portfolios, etc.

Q: Is there a different application deadline for international students?

A: No, the same application deadline applies to both local and international students.

Q: What are *Early Decision* and *Early Action* admission programs?

A: Some campuses offer *Early Decision* (deadline: November 1) or *Early Action* (deadline: November 15) programs to first-year students. *Early Decision* is binding, and appropriate if you are absolutely certain about your first choice campus. You may apply to only one campus through this program. If admitted, you will be expected to withdraw applications at other colleges. *Early Action* is non-binding and is appropriate if you would like to apply early. You may apply to several campuses through this program. You have until May 1 to make a final decision on your choice of campus and program.

Q: Are there minimum GPA (grade point average) or entry exams required for admission?

A: Each SUNY campus evaluates students individually for admission. Campuses are looking for students who want to challenge themselves, have worked hard and done well in high school (and university, if you are a transfer applicant). For more information, you can contact your local authorized SUNY agent in your home country or visit www.suny.edu/campusadmissionsinfo.

Q: What are the most important criteria in the admission decision?

A: For a first-year (freshman) applicant, your high school academic record is most important. For transfer applicants, your performance in university-level work will carry the most weight in the application review process.

Q: Do I have to get my transcripts translated and evaluated?

A: Yes, transcripts must be translated into English. For translation and evaluation of transcripts, ask your institution if they can provide the transcript in English or contact an evaluation service provider such as World Education Services (www.wes.org), the International Education Research Foundation, Inc. (www.ierf.org) or Education Evaluators International, Inc. (www.educei.com). For additional credential evaluation specialists, consult the National Association of Credential Evaluation Services (www.naces.org).

Q: What happens if I do not get accepted?

A: If you apply to at least 3 SUNY campus and do not get accepted to any of the campuses you applied to, our *Assured Admission* policy guarantees you a place at one of the campuses in the SUNY system. So if you apply to become a SUNY student, we guarantee to make that happen.

Cost and Financial Matters

Q: What are the estimated annual expenses for studying at SUNY?

A: Our tuition for students from outside of New York State is among the lowest in the nation, and our campuses are regularly recognized for their academic programs and affordable price. See the *Tuition, Fees and Other Costs* page in this prospectus for an estimated budget.

Q: Is financial aid available to international students?

A: U.S. federal and state aid programs are not available to international students. Some campuses offer scholarships for international students. Please contact your local authorized agent in your home country or the campuses directly for more information.

Admission Requirements/Studying English at SUNY



Admission Requirements

First-year (freshman) applicants are required to have completed the highest level of secondary education in their country of residence.

Transfer applicants will be evaluated for admission based on the number of credits completed and the grades received in their university coursework. Credits and required scores will vary among SUNY colleges.

All applicants need official original transcripts or official certified copies of academic records. If your transcripts are not written in English, certified translations must be attached to the original transcript with a key to the marking system or grading scale included (if it is not indicated on the transcript).

For translation and evaluation of transcripts, contact an evaluation service provider such as World Education Services (www.wes.org), the International Education Research Foundation, Inc. (www.ierf.org) or Education Evaluators International, Inc. (www.educei.com)

For additional credential evaluation specialists; consult the National Association of Credential Evaluation Services (www.naces.org).

Studying English at SUNY

At SUNY you will find a wide range of offerings to help you master the English language, paving the way for you to make the most of your educational and vocational opportunities. These programs range in length and objective. Check each campus website for details regarding minimum score requirements.

English as a Second Language Support

Many campuses offer English as a Second Language (ESL) support either before the semester begins (during the U.S. summer) or as part of your curriculum. Please visit the following SUNY website to see a list of SUNY campuses that provide English language support to international students: https://www.suny.edu/student/international_esl.cfm.

Intensive English Language Programs

SUNY also has a number of full-time Intensive English programs intended for students who seek admission to an American university. These programs are year-round, full-time programs. They have many levels to accommodate students at varying stages of their English language learning. These Intensive English programs can issue documentation for F-1 visas upon admission to the program. In addition, many of these have conditional admissions arrangements available for students who are looking to go on for academic work; however, admission to the university or college is NOT required.

University at Albany

The Intensive English Language Program—www.albany.edu/ielp/AboutIELP.html

The Intensive English Language Program (IELP) at University at Albany is a multi-level, personalized program designed to improve the skills of those for whom English is a second language. It is intended for serious students who plan to seek admission to an American college or university, or who wish to improve their English for business, personal or professional reasons. The program is offered year-round. In addition to fall and spring semesters, the IELP offers an eight-week summer session. There are 20 class hours per week. Courses are taught at the high-beginning, intermediate and advanced levels, and classes are kept small so students can receive individualized attention according to their needs. IELP students engage in a variety of organized activities and cultural events to help ensure that they will experience the fullest possible use of the English language and increase their knowledge of American culture. During the semester IELP offers activities and excursions designed to help students learn English and experience American culture.

The University at Albany is situated in Albany, the capital of New York State. Historic Albany is a mid-sized city in upstate New York State in the Hudson River Valley, between the Adirondack and Catskill Mountains.

Admission Requirements/Studying English at SUNY



Fulton-Montgomery Community College *The Intensive English Language Program—* www.fmcc.edu/admissions/international-students/esl-programs/

Fulton-Montgomery Community College offers a full-time non-credit Intensive English as a Second Language (ESL) Program for students who need to improve their language ability before beginning full-time study in a college degree program. The ESL Program is also intended for those who want to study English for career or social purposes. Students are instructed in listening, reading, writing and speaking as well as American culture studies. Courses are available at multiple language proficiency levels. Each course has 75 hours of intensive language classroom instruction; five credit-equivalent hours. A free placement exam is required before enrollment. Courses are presented either in monthly modules or semester blocks (summer only) and enrollment is on a rolling admission basis.

Fulton-Montgomery Community College is a campus of the State University of New York located in rural Upstate New York at the foothills of the Adirondack Mountains.

SUNY New Paltz *Haggerty English Language Institute—* www.newpaltz.edu/esl/

The Haggerty English Language Program (HELP) provides language, academic, and cultural support for each of its students. Services include English language instruction, language testing, academic preparation and advisement, cultural activities, field trips, and a conversation partner program so students can practice “real English” with American students at our university. HELP offers four levels of instruction. The courses

emphasize practical usage of English and academic preparation. At each of our four levels (from elementary to academic preparation classes), four classes are offered: reading and writing, listening and speaking, grammar, and special topics (including TOEFL prep, pronunciation, and American culture, etc.). Upon arrival, each student takes an English Proficiency Test and a Placement Test. After testing, they are placed in classes at different levels based on strengths or weaknesses. English language proficiency does not need to be supplied prior to arrival.

SUNY New Paltz is located in the beautiful and historic Hudson River Valley, in a peaceful campus setting only 90 minutes from the heart of New York City.

Stony Brook University *Intensive English Center—* <http://www.stonybrook.edu/iecweb/>

The Intensive English Center (IEC) offers a program of courses and activities designed to meet the special needs and interests of people from other countries who want to study at universities in the U.S. or improve their English to meet personal and professional goals. The IEC faculty are experienced instructors with advanced degrees. The class sizes are small, which makes it possible for each student to receive personal attention from the instructors. After comprehensive testing during the first week of the program, students are placed into levels from beginning to advanced. It is mandatory for all students in core classes to attend classes for a minimum of 18 hours per week. IEC core classes meet Monday through Friday for a minimum of three hours each day. They include speaking and listening, writing and structure, and reading and vocabulary.

Stony Brook University is a public re-

search university located in Stony Brook on the North Shore of Long Island, about 50 miles (80 km) east of Manhattan.

Westchester Community College *English Language* *Institute—*http://www.sunywcc.edu/continuing_ed/esl/esl.htm

Westchester Community College services over 5,000 English as a Second Language students, more than any other educational institution in the county. Ten levels of ESL instruction are offered, each providing balanced instruction and active practice in all English language skills: listening, speaking (including pronunciation), standard grammar, reading, and writing. New students take an examination to determine the level at which they begin study. Most ESL students use a language laboratory for additional practice. English-only environment for all activities promotes maximum learning. These courses serve the needs of the general learner and learners preparing for college/university study. Instructors are professionals in TESOL (Teaching English to Speakers of Other Languages). The English Language Institute offers classes in a number of locations in Westchester County, including Mount Kisco, Mount Vernon, Peekskill, New Rochelle, Ossining, Yonkers, and Port Chester. Not all classes are offered in every location, so be sure to check the semester schedule.

Westchester is the largest educational institution in Westchester County and is located less than an hour’s drive from New York City.

Ready to Apply?




www.suny.edu/applysuny

SUNY's online application. It's secure, fast, easy and available whenever you want to apply. You can start the application process, save your work and come back to complete your application at a later date. Our system checks your work as you go. If you apply online, you can add campus choices at any time without having to re-enter your original data. Once you submit your application, return to applySUNY to complete your supplemental applications, send your academic record and check your status.

Tips

- › Preview the online application and SUNY supplemental application questions now by downloading the worksheets at www.suny.edu/student/forms.cfm.
- › Find requirements for supplemental applications at www.suny.edu/suppapps.
- › Complete your academic record online at www.suny.edu/SOAR.

10 Easy Steps to your Future

- 1 **Contact** official SUNY authorized recruitment representative (see next page) 
- 2 **Browse** to www.suny.edu/student
- 3 **Click** the Apply Now button
- 4 **Create** an account
- 5 **Answer** questions
- 6 **Choose** campuses and curriculum
- 7 **Pay** your application processing fee
- 8 **Print** your forms
- 9 **Submit** your Supplemental Applications
- 10 **Submit** supporting documentation by mailing a set of original or certified documents to each campus.

SUNY Authorized Recruitment Representatives

Below is a list of official SUNY authorized recruitment representatives that students can access within their home country for help and guidance. The list is alphabetical order by country and organization name, and is subject to change. Please refer to the SUNY Global website: <http://www.suny.edu/global/agents> for the most updated list.

China

Aoji Education Group

- > www.globeedu.com
- > info@globeedu.com

Can-Achieve Consultants

- > www.canachieve.com.cn
- > beijing@canachieve.com.cn

China Education International

- > admission.usca@eduwo.com
- > www.eduwo.com

EduGlobal

- > infobeijing@eduglobal.com
- > www.eduglobalchina.com

EIC

- > eic@eic.org.cn
- > www.eic.org.cn

Jiangsu International Education Consulting Co.

- > www.jesie.org
- > usastudy@jesie.org

Keyword International

- > www.keywordedu.com
- > info@keywordedu.com

U.S. Department of Chivast International

- > www.educationusa.com.cn
- > namerica@chivast.org

Wiseway

- > www.wiseway.com.cn
- > international@wiseway.com.cn

Denmark

EDU

- > www.edu-danmark.dk
- > vejledning@edu-danmark.dk
- Also covers: Faroe Islands*

Germany

IEC

- > www.ieconline.de
- > info@ieconline.de
- Also covers: Austria*

India

AEMS

- > www.aemsindia.com
- > info@aemsindia.com

Canam Consultants Ltd.

- > info@canamgroup.com
- > www.canamgroup.com
- Also covers: Kuwait*

Disha Consultants

- > <http://dishaconsultants.in>
- > info@dishaconsultants.in

Global Reach

- > www.globalreach.in
- > global.reach@vsnl.com
- Also covers: Nepal, Bhutan*

Gyan Foundation

- > www.gyanfoundation.com
- > reach@gyanfoundation.com

Kangaroo Studies

- > www.kangaroostudies.com
- > info@kangaroostudies.com

Oceanic

- > www.oceanicconsultants.com
- > inquiries@oceanicconsultants.com

PAC Asia

- > www.pacasia.org
- > info@pacasia.org
- Also covers: Nepal, Sri Lanka*

Raj Consultants

- > www.rajedu.com
- > info@rajedu.com
- Also covers: Nepal, Sri Lanka*

SIEC

- > www.siecindia.com
- > westdelhi@siecindia.com

Winy

- > www.winyedu.com
- > edu@winyedu.com

Nepal

Kathmandu Alfa Beta Institute

- > www.alfabetaedu.com
- > info@myalfabeta.com
- Also covers: India*

Nigeria

Glory Educational Services

- > www.gloryeduserve.com
- > enquiries@gloryeduserve.com

Saudi Arabia

International Group for Educational Consultancy

- > www.igec.com.au
- > info@igec.com.au
- Also covers: Iran, Jordan, UAE*

South Korea

IAE Global

- > www.iaeglobal.net
- > helpdesk@eduhouse.net
- Also covers: Brazil, Canada, China, Hong Kong, India, Indonesia, Mexico, Myanmar, Nepal, Taiwan, Vietnam*

Kokos International

- > www.ikokos.com
- > kokosusa@ikokos.com

Thailand

Mentor International

- > www.mentor.ac
- > info@mentor.ac
- Also covers: Myanmar*

United Arab Emirates

Intelligent Partners

- > www.intelligentgulf.com
- > dubai@intelligentgulf.com
- Also covers: Qatar, Saudi Arabia, Kuwait, India*

Vietnam

Access American Education

- > www.aaevietnam.com
- > info@aaeeduusa.com
- Also covers: Russia*

Australia (head office)

IDP Education

- > www.idp.com
- > usa.info@idp.com
- Covers: Azerbaijan, Bahrain, Bangladesh, China, Cambodia, Egypt, Hong Kong, India, Indonesia, Jordan, Kuwait, Libya, Malaysia, Mauritius, Oman, Philippines, Saudi Arabia, Singapore, Sri Lanka, South Korea, Taiwan, Thailand, Turkey, UAE, Vietnam*

United States (head office)

CollegeStudyUS

- > www.collegestudyus.com
- > info@collegestudyus.com
- Covers: India, Sweden, China, South Korea, Japan, Vietnam, Brazil, Trinidad & Tobago*

World Education Group

- > www.worldeducationgroup.com
- > info@worldeducationgroup.com
- Covers: Bangladesh, China, Croatia, Ghana, Ecuador, India, Israel, Kenya, Japan, Jordan, Lebanon, Macedonia, Mauritius, Mexico, Moldova, Morocco, Nepal, Nigeria, Russia, Saudi Arabia, South Korea, Sri Lanka, Taiwan*

Tuition, Fees and Other Costs



2012-13 Typical Expenses for Undergraduate Students at a SUNY Campus Nine-Month Academic Year (Use these amounts as a guide to costs in 2012-13)

Cost information as of June 2012 and is subject to change.

	State-Operated Campuses Baccalaureate Degree Programs	Community Colleges Associate Degree Programs
	Out-of-State Residents / International Students	Out-of-State Residents / International Students
	Living on Campus	Living on Campus
Tuition Fees ¹	\$14,820	\$7,940
Student Fees ¹	1,340	520
Room & Board	11,060	9,200
Books & Supplies	1,270	1,290
Personal Expenses	1,450	1,110
Transportation	1,050	1,320
TOTAL COST	\$30,990	\$21,380

¹Figure represents the average fee.

International students are expected to provide their own sponsorship. This sponsorship is usually personal savings, family savings, and educational loans from their own country or a combination of sources.

International students must provide financial documentation showing proof of their ability to pay for their first academic year before the campus can issue an I-20. The required amount for one academic year of full-time study will vary from campus to campus, but will include:

- > Tuition and fees
- > Books and supplies
- > Health insurance
- > Living expenses

Check individual campus websites for detailed information on expected costs.

Scholarships

Some campuses offer scholarships to international students, but availability varies from campus to campus and are typically competitive.

Some scholarships are for incoming students while others offer scholarships to continuing students based on academics and service.

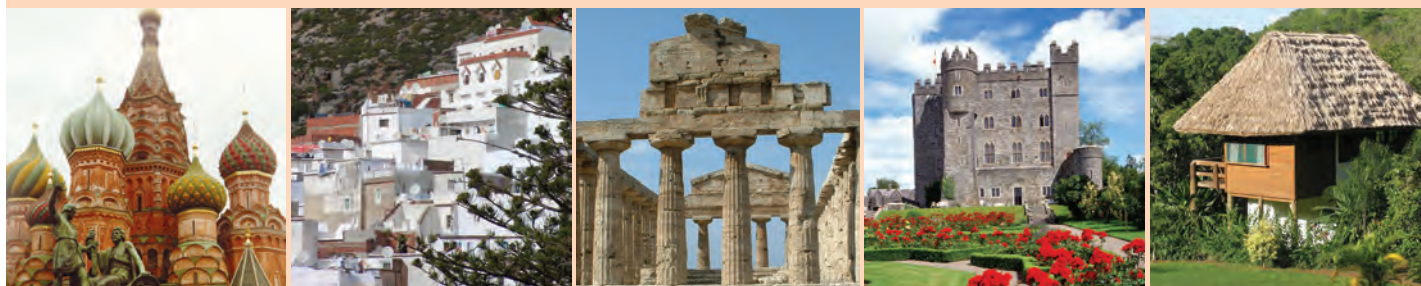
Working on Campus

Your student visa will allow you to work for up to 20 hours a week in an on-campus job. Please be aware that international students are not guaranteed jobs. You need to apply and be hired for these jobs.

While part-time work can provide some additional spending money, please be aware that these funds should not be expected as a means to pay for your education expenses.

Please note that costs vary depending on the campus, its location, program of study, housing, personal expenses and other individual factors.

International Student Services



Each SUNY campus provides **support for international students** to help you transition to life as a SUNY student.

Before you arrive

The SUNY campus where you were accepted will provide you with information about travel, applying for a student visa, requirements for health insurance, housing options, how to pay tuition fees, and much more.

When you arrive

- › Attend orientation programs and activities before classes begin. Each session is designed to help international students learn about all aspects of life on campus, including:
 - › Course registration
 - › Understanding rules and academic culture
 - › Using the library
 - › Health services and other resources
 - › Setting up cell phone and other accounts, and much more
- › Meet your academic advisor who will help you plan your academic life on campus.
- › Meet your international student advisor who will help you learn about the campus and all of the services available to you.

After you have settled in

- › Attend sessions for international students throughout the year.
- › Visit the international student services office to find out about:
 - › Ongoing support and guidance available to all international students
 - › Your responsibilities as an international student and how to maintain your immigration status

- › Cultural events and activities for international students
- › Options available to international students for on-campus employment and practical training related to your field of study

You will also receive important updates for international students throughout your stay.

Career and Counseling Services:

Campus services are available to assist students with their adjustment to campus as well as their career and educational plans. They can help you with:

- › Identifying a major
- › Deciding whether and where to transfer after your degree
- › Preparing to search for a job after you graduate
- › Personal issues related to cultural adjustment, life issues, other matters

Adjustment to a new culture can be a challenging time. These professionals, like your International Student Advisor, are here to assist you in a successful transition.

Health Services:

The Student Health Office on campus is a wonderful resource on health-related matters! They can answer questions about your health insurance requirements, and can often treat illnesses or other health-related concerns on campus. They can also refer you to a local doctor if needed.

International students are SUNY students. Every student is encouraged to participate in all aspects of campus life, including:

- › Clubs and organizations
- › Cultural events
- › Volunteer and service opportunities
- › Athletics
- › Tutoring and other academic support
- › Career development
- › Involvement in the local community
- › Writing for the campus newspaper
- › Broadcasting with the campus television and radio stations

Living Arrangements:

Many international students live on campus in dormitories. Campus living arrangements vary, but you will find many options available to you from single rooms to shared and suite-style accommodation. Students can also live off-campus, but you should learn about transportation options to and from campus before deciding to live off-campus.

You can study abroad during your program at SUNY:

If you are enrolled in a degree program at SUNY, your program may allow you to study at a university outside of the U.S. for a period of time. SUNY offers more than 550 study abroad opportunities in more than 50 countries, and on all continents. Programs also include international internships, service learning and dual diploma options and range from a two-week intensive course to an entire semester or year abroad. To learn more, visit www.suny.edu/student/studyabroad.

Campus Web Sites

CAMPUS	WEB SITE
University Centers and Doctoral Degree Granting Institutions	
University at Albany	www.albany.edu/admissions
Binghamton University	www.admissions.binghamton.edu
College of Environmental Science & Forestry	www.esf.edu
University Colleges	
The College at Brockport	www.brockport.edu
Buffalo State College	www.buffalostate.edu/admissions
SUNY Cortland	www.cortland.edu
SUNY Fredonia	www.fredonia.edu
SUNY Geneseo	www.geneseo.edu
SUNY New Paltz	www.newpaltz.edu
Old Westbury	www.oldwestbury.edu
College at Oneonta	www.oneonta.edu
SUNY Oswego	www.oswego.edu/admissions
SUNY Plattsburgh	www.plattsburgh.edu/admissions
SUNY Potsdam	www.potsdam.edu
Purchase College	www.purchase.edu
Technology Colleges	
Alfred State College	www.alfredstate.edu
SUNY Canton	www.canton.edu
SUNY Cobleskill	www.cobleskill.edu
SUNY Delhi	www.delhi.edu
Farmingdale State College	www.farmingdale.edu
Morrisville State College	www.morrisville.edu
SUNYIT	www.sunyit.edu
Community Colleges	
Broome Community College	www.sunybroome.edu
Clinton Community College	www.clinton.edu
Erie Community College	www.ecc.edu
Fulton-Montgomery Community College	www.fmcc.edu
Herkimer County Community College	www.herkimer.edu
Jamestown Community College	www.sunyjcc.edu
Mohawk Valley Community College	www.mvcc.edu
Monroe Community College	www.monroecc.edu
Nassau Community College	www.ncc.edu
North Country Community College	www.nccc.edu
Rockland Community College	www.sunyrockland.edu
Sullivan County Community College	www.sunysullivan.edu
Westchester Community College	www.sunywcc.edu
SUNY Korea	www.sunykorea.ac.kr

To order specific campus catalogs or inquire about admission decisions, call the campus directly.
Visit SUNY campuses online at: www.suny.edu/student.

What Others Say About SUNY



« I spent two years at SUNY Potsdam which I believe is perhaps the most treasurable time in my life by far. This is the place where I first watched Hockey games, attended gorgeous classical music concerts, and explored the beauty of Adirondack mountains. This is the place where I experienced the most intensive studies under the guidance of super-supportive professors. This is the place where my knowledge of the world had tremendously enhanced by talking and working with people from all around the globe. This is the place where I had equipped myself for a better life and a greater future.

*Yingying Xu, China
SUNY Potsdam*

Community College Students:



Coming from a foreign country I know that integration is not always easy. The faculty members are very welcoming and encouraging. Consequently, that is what

I love about BCC. BCC is not just a great educational institution, but also a place I found my desire in Environmental Science.

– Valerie Louis, Haiti



BCC has been one of the most exciting and greatest achievements I've had in my life. I have had the opportunity of meeting many new people, and begun to make new friends

and professional networks worldwide. I am very thankful for BCC being a part of my life.

– Diegory Guarchaj, Guatemala



“By studying abroad, I got used to communicating with others, and what is more, I decided to pursue my career in the Business field. My experience especially prepared me to get ready for job interviews. I would not have been able to find what I want to do in the future without this experience.”

*Natsuki Mikami, Japan
SUNY Plattsburgh*



My dream was always to pursue a field as a health care worker. I spent my time in Individual Studies of Health Science degree taking prerequisites, and finally got into

the nursing program at BCC. I found my passion in Nursing, and my desire in caring my patients. In addition, I am grateful in meeting so many new faces and cultures during my time here at BCC.

– Tsaiyi, Taiwan



In 2010 I came to the U.S and wished to improve my English. I took ESL classes at first, and then I chose Business Administration as my major. As a member of the BCC

family I receive faith in believing that I am able to succeed in the future. In addition, I have learned so much in problem solving and overcoming difficulties in life.

– Qian qian, China



The opportunity to come to the United States and start my career at BCC in the Engineering Science program introduced me to the wonderful knowledge that I

always wanted to acquire. The faculty and professors at BCC offer a comfortable and nice environment for students who want to accomplish a two years degree.

– Juan Carlos, Spain



Studying at SUNY BCC has been a marvelous experience since the first day that I came to campus. The classes in this school are very are very dynamic and the professors are always

there supporting us to be successful. In addition, there are several clubs that allow us to meet many new people. My experience at BCC is one of the best ever!

– Cristhian J., Honduras

“I will certainly remember the kind people here in Western New York, because they have helped me so much, and I think I will keep in touch with them even after I go back to China.”

*Lei Wang, China
Jamestown Community College*

“Faculty was really helpful, and I feel like I've learned a lot, not only in my major subjects, but other things, as well.”

*Redzepagic Haris, Montenegro
Nassau Community College*

What Others Say About SUNY



« “Alfred State gave me the opportunity to improve my English and my GPA, thanks to the high level of preparation the professors here offered. Also, I was part of the school radio station and I had a lot of fun with the people there. Finally, I enjoyed the little parties and events organized by the school.”

*Lara Mantenuto, Italy
Alfred State College*

“I found that there was an immediate strong connection with the international department. Because I had no idea where to start, they guided me through all the necessary steps in choosing my program and the courses to ease my difficult transition back the educational world.”

*Veronica Bartkofsky, Canada
Erie Community College*

» I lived in Whitaker Hall last semester and really loved it. It felt like a big family and the staff there was outstanding., I have had wonderful academic experiences with my professors and classmates. I learned different ways of study which are never used in China.

*Jinhang “Blake” Xue, China
SUNY Cortland*



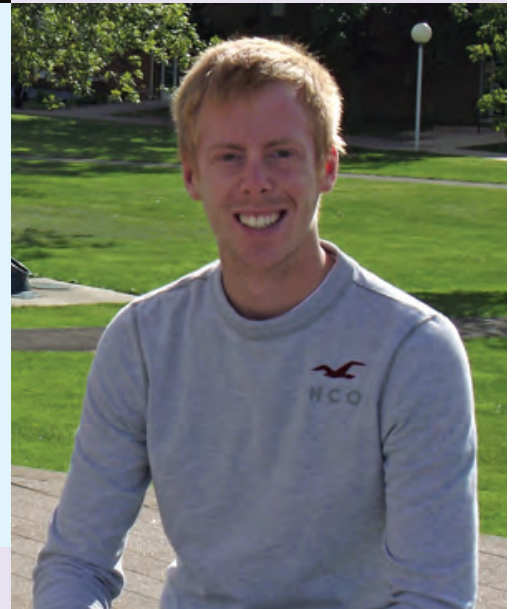
“I was looking for an institute with a degree in Economics. Along with that, I wanted a quality liberal arts education at a reasonable price. Well known for its rigor and high standards, SUNY Geneseo stood out to me. Plus the fact that SUNY Geneseo is one of the best value schools sealed the deal for me.”

*Rajan Burathoki, Nepal
SUNY Geneseo*



« I am happy about the exposure to students from many countries. This has not only afforded an opportunity to cohabit with them but also the pleasure of learning their culture and traditions. Thus, a walk around the campus is akin to a tour of the world. A study in multicultural activity is therefore an education by itself though not paid for.

*Jasmin Athas, Sri Lanka
SUNY Plattsburgh*



» “At SUNY Cobleskill I experienced a totally different environment. I learnt many aspects about life, such as skills management and time management.

Since SUNY Cobleskill is a small campus, it is easier to get in touch with all the professors, and learn something new from each of them.”

*Mohamed Saeed Baligh, Egypt
SUNY Cobleskill*



“The students here are very kind and so helpful. I feel very welcome in this area. The school offers many good international courses for my majors that will be useful back home. There are so many different activities and organizations to choose from which I enjoy a lot.”

*Daniel Palm, Sweden
SUNY Fredonia*

New York State Map with Participating Campus Locations



The State University of New York
www.suny.edu



2013 Undergraduate International Student Prospectus

The State University of New York