

# International Prospectus 2022/2023



**LINCOLN**  
UNIVERSITY  
TE WHARE WĀNAKA O AORAKI

# Things grow when the conditions are right.

It's true for industry, agriculture  
and it's most certainly true for people.  
At Lincoln University, helping you  
grow is what we are all about.

And we encourage you to do it your  
way, with diverse learning that fits  
your ambitions in an environment  
that allows you to flourish.

We partner you with industry to  
prepare you for the real world and to  
plant the seeds of a rewarding future.

So when the time comes, you're  
ready to go out there and grow the  
future for yourself and others.

Welcome to Lincoln University.  
A place to grow.



**LINCOLN**  
UNIVERSITY  
TE WHARE WĀNAKA O AORAKI



# Welcome



Kia ora from New Zealand's specialised land-based university.

We look forward to helping you to grow your future.

While the world is changing rapidly, one thing remains certain: studying at Lincoln University will help you to realise your potential and be part of shaping a future that benefits from a greater relationship with the land.

As the first specialised land-based university in the Southern Hemisphere, we have the experience to guide you towards the fulfilment of your goals, while our future focus ensures that your qualification is grounded in today's world.

Lincoln is a safe haven where you will enjoy a wealth of opportunities through our leading-edge educational facilities, powerful research activities, meaningful industry collaborations, global connections and world-class learning environments.

Just as importantly, you will be part of a thriving and inclusive student community, as you make friendships that last a lifetime.

After graduating from Lincoln, you will begin your career globally-connected, forward-thinking and ready to shape tomorrow.

We truly look forward to helping you grow.

A handwritten signature in black ink, appearing to read 'G Edwards', written in a cursive style.

**Professor Grant Edwards**  
Vice-Chancellor, Lincoln University

**Ka tipu, ka re a, ka whanake  
ake te rākau mātauraka**

**Ko tōna pakia ka,  
he waewae ha ere**

**Ko tōna kaup apa,  
he takata ora**

**Nau mai, ki Te Whare  
Wānaka o Aoraki**

*Plant, nurture and grow the tree of knowledge  
Whose roots allow it to move freely  
Whose purpose is to support healthy people*





<b>Why Lincoln</b>	<b>01</b>
New Zealand: a place like no other	02
New Zealand key facts	03
Welcome to Canterbury	04
It all happens in Christchurch	06
Christchurch key facts	07
Lincoln Campus	08
Great futures grow at Lincoln	10
Global reach and relevance	12
<b>Practical Information</b>	<b>15</b>
Student Support	16
Key information	18
Study abroad & exchange	20
Accommodation	21
<b>Study at Lincoln</b>	<b>23</b>
Semester & academic year	24
Undergraduate pathways	26
Postgraduate pathways	28
English language school	30
Areas of specialisation	32
English language requirements	36
Academic requirements	38
Intake & tuition fees	43
Scholarships	47
<b>How to apply</b>	<b>49</b>
<b>Appendix</b>	<b>53</b>
Terminology	54
Contacts	56

# Contents





# Why Lincoln?



# New Zealand: a place like no other

Forty-two degrees south of the equator, you'll find a country blessed with glorious landscapes and a population of 5 million of the world's friendliest people. And just like the many visitors who come every year, you are sure to find New Zealand an easy place to enjoy, be safe and feel at home.

He aha te mea nui o te ao? He takata! He takata! He takata!  
What is the most important thing in the world?  
It is people! It is people! It is people!



## NZ key facts



### 01.

**Located in the South Pacific, NZ is similar in size to Japan and the United Kingdom.**

### 02.

**Population of approximately 5 million.**

### 03.

**NZ has some of the world's most amazing scenery and is one of the best adventure destinations on the planet.**

### 04.

**Diverse and multicultural population.**

### 05.

**Rated 8th in Legatum (2021) Prosperity Index™.**

### 06.

**27.4% of people living in New Zealand were born overseas.**

(2018 NZ Census)

### 07.

**Over 200 ethnic groups were identified in the NZ 2018 census.**

### 08.

**New Zealand is the second-safest country in the world.**

(World Population Review 2020)

### 09.

**NZ is ranked the least corrupt country in the world (alongside Denmark).**

(Corruptions Perception Index, Transparency International, 2020)



# Welcome to Canterbury

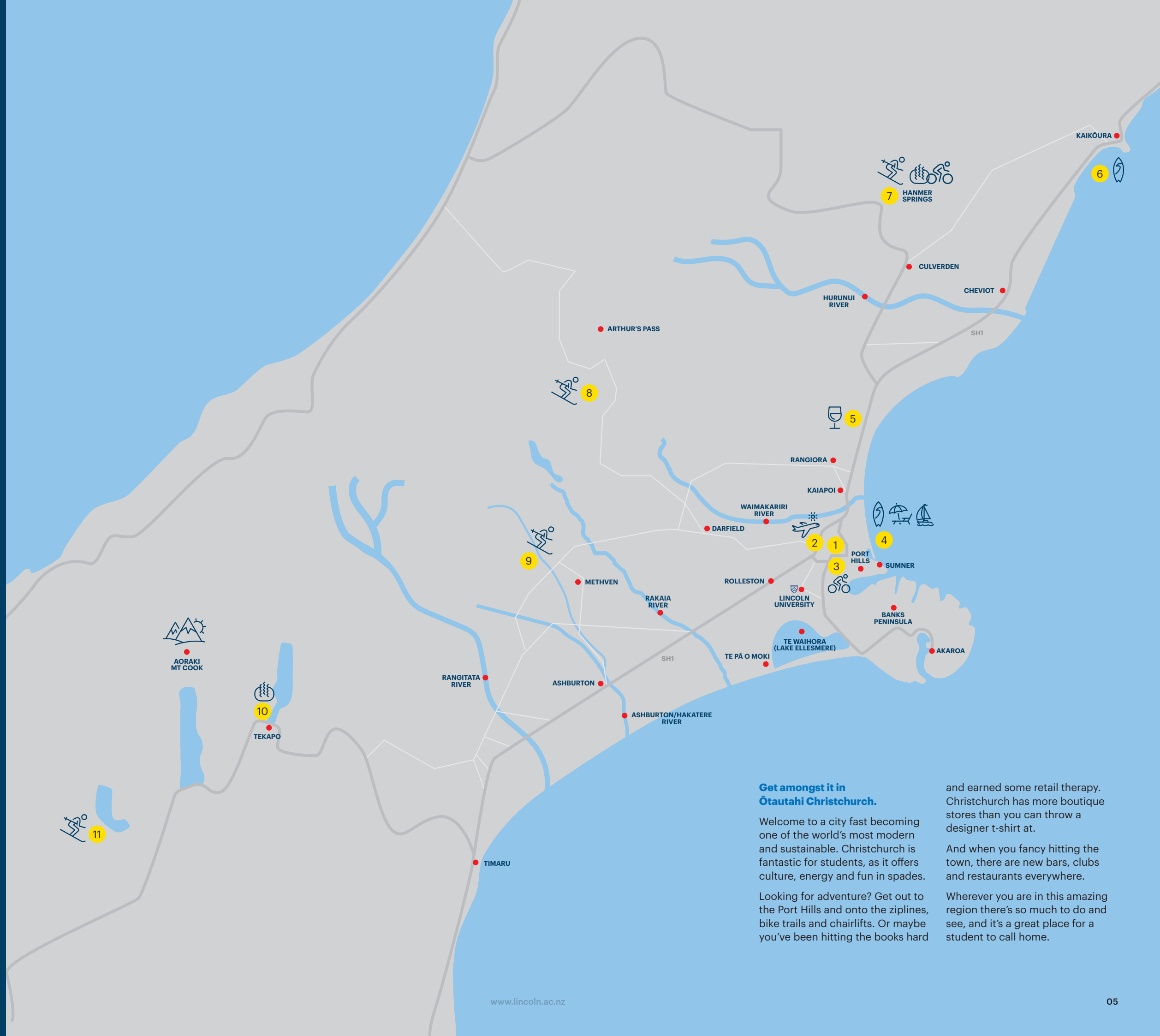
Our campus is located in Lincoln township, a thriving village on the Canterbury Plains.

Lincoln is small and friendly, boasting local pubs, great cafés and eateries, shops and even its own farmers and craft market.

The Canterbury region offers a plethora of attractions, activities and natural wonders, from snowy mountains and wide-open plains to the stunning coastline.

And when you feel like a weekend on the slopes, it's less than two hours' drive to the nearest ski area.

- 1 Ōtautahi Christchurch CBD – Hagley Park, Botanical Gardens
- 2 Christchurch International Airport
- 3 Christchurch Adventure Park
- 4 Beaches – New Brighton, Sumner, Taylors Mistake
- 5 Wineries
- 6 Surfing Kaikoura area
- 7 Hanmer Springs Thermal Pools and Spa, Hanmer Springs Ski Area
- 8 Ski areas – Porters, Cheeseman, Broken River, Craigieburn, Temple Basin, Mt Olympus
- 9 Mt Hutt Ski Area
- 10 Tekapo Springs (hot pools)
- 11 Ōhau Snow Fields



## Get amongst it in Ōtautahi Christchurch.

Welcome to a city fast becoming one of the world's most modern and sustainable. Christchurch is fantastic for students, as it offers culture, energy and fun in spades.

Looking for adventure? Get out to the Port Hills and onto the ziplines, bike trails and chairlifts. Or maybe you've been hitting the books hard

and earned some retail therapy. Christchurch has more boutique stores than you can throw a designer t-shirt at.

And when you fancy hitting the town, there are new bars, clubs and restaurants everywhere.

Wherever you are in this amazing region there's so much to do and see, and it's a great place for a student to call home.



# It all happens in Christchurch

Welcome to a city fast becoming one of the world's most modern and sustainable. Ōtautahi Christchurch is the South Island's most vibrant city and is fantastic for students, with culture, energy and plenty to do all year round.

Looking for adventure? Get out to the Port Hills and onto the ziplines, bike trails and chairlifts. Or maybe you've

been studying hard and earned a day shopping. Ōtautahi Christchurch has boutique stores all over town.

If you want a night out, there are new bars, clubs and restaurants everywhere.

Amazing things are happening in Ōtautahi Christchurch. Come and be part of it today.

- 1 Kaikōura (2 hrs north of Ōtautahi Christchurch) has some of the most incredible whale watching tours in New Zealand and is a great weekend trip.
- 2 Hit the slopes at a number of incredible ski fields close to Lincoln.
- 3 The Terrace along the Avon river front in the centre of Ōtautahi Christchurch is a great place to grab a drink or a bite to eat.
- 4 The Gondola up the Port Hills has amazing views over the city and is an exciting place to go for lunch.
- 5 There's a wide range of mountain biking and walking tracks all over Banks Peninsula.



Photo credits to ChristchurchNZ

# Christchurch key facts

## Largest.

Christchurch is the largest city in the South Island.

## 380,000.

Approximate population of 380,000.

## 1st.

Christchurch was the first official city of New Zealand.

## Friendliest

Christchurch is ranked as New Zealand's friendliest city, and the seventh friendliest city in the world. (Big 7 Travel 2019)

## Region.

Canterbury is New Zealand's biggest region.





# Lincoln Campus

**Welcoming  
international  
students  
since 1880**

In the heart of New Zealand's South Island, near Christchurch city is Lincoln University's Te Waihora campus.

Surrounding this historic yet modern campus are 58 hectares of green and pleasant fields. Around 3300 students from nearly 80 countries go busily about growing their future.

Great facilities are plentiful with advanced teaching spaces, a comprehensive library, leading-edge research laboratories with 24-hour access, eateries, a printery, world-class cricket facility and a fully equipped fitness centre.

It's the heart of one of the world's highest ranked small universities and New Zealand's best at harnessing the value of the land. And just like our students, Lincoln is changing and growing all the time.





# Great futures grow at Lincoln

Choosing the best university for you is especially important when you are coming all the way from another country to study. With Lincoln, you can tick all the boxes. Take a look below at the 12 most popular reasons international students choose us.



## 01.

### Great futures start here.

We believe the secret to an outstanding future is starting in the right place today. At Lincoln, you'll enjoy the perfect balance of credibility, experience and future-focus in a size that works for you.

Plus many of our programmes include practical work and field trips, for hands-on learning.

## 02.

### Our history, your future.

Lincoln is the Southern Hemisphere's oldest agriculturally-based university. Our story began with farming and as New Zealand and the international economy grew more diverse, we kept pace. Today we are uniquely placed to offer relevant learning, informed by the past, with a vision for the future.

## 03.

### A degree that works.

From Agribusiness to Landscape Architecture, Viticulture and Oenology to Tourism, Lincoln offers a wide range of degrees relevant for today and ready for tomorrow.

Lincoln offers a full range of qualifications including:

- Bachelor's Degrees
- Postgraduate Certificates & Diplomas
- Research & Taught Master's
- PhDs

## 04.

### Good for the planet.

So much of what we do at Lincoln involves land and how we treat the planet. Our world-leading research includes ground breaking innovations in decreasing emissions, alternative fuels and sustainable tourism. And through the Sustainable Action Group for our Environment (SAGE), we also have a group of passionate staff and students that work to make sure our campus is as sustainable as possible. [www.lincoln.ac.nz/sustainability](http://www.lincoln.ac.nz/sustainability)

## 05.

### Being small makes a big difference.

We're New Zealand's smallest university, and that's a huge advantage. You enjoy a more personal learning environment and much more face-to-face contact with lecturers. Plus, Lincoln's village atmosphere provides a real sense of community and more collaboration among students.

## 06.

### The grass is greener.

At Lincoln, we are careful to avoid stretching ourselves across everything. Rather, we put our resources into what we truly excel at. Our history is land-based and that's where our future lies. If yours does too, you're in the right place at Lincoln.

## 07.

### World's 15th best small university.

We keep pace with the very best. Lincoln is recognised around the world as an outstanding small university that delivers quality learning and achieves exceptional results.

## 08.

### 6% higher graduate employment.

Industry both here and overseas know we produce outstanding graduates. A degree from Lincoln opens more doors and helps you get your career moving faster.

## 09.

### 94% course completion.

Lincoln does more to help you succeed. We offer students the skills to achieve their study goals. That's why nearly all of our bachelor-level students successfully complete their courses.

## 10.

### More contact with lecturers.

Our staff pride themselves on always being available to talk to students. Our open-door policy is there to give you support and help you get the most from your studies.

## 11.

### Leaders in research.

Through our own research, as well as our collaborations with world-leading research institutes such as Plant & Food Research and AgResearch, we have more academics producing more world-class research than any other New Zealand university relative to size.

## 12.

### Gender balance.

With a 51:49 percent split between female and male students, Lincoln offers a diverse experience in an inclusive and enriching learning environment beyond just what you learn in your lectures.

# Global reach & relevance

Why do students from all over the world flock to study at Lincoln University year after year? It might have something to do with our beautiful campus and stunning New Zealand landscapes. Or all of the friendly, like-minded students and outstanding lecturers. Or perhaps it's our long list of international credentials:

## 15th.

**in the world for all small universities.**  
(QS World University Ratings 2020)

## Top 100

**in Agriculture.**  
(QS rankings 2022)



## 1st.

**Tertiary institution in an English speaking country to teach viticulture and oenology in a cool climate.**

## 1st.

**Agriculture-based university in the Southern Hemisphere.**

## One.

**Lincoln is ranked number one in New Zealand, and 51st globally in the UI Green Metric World University Rankings (2021).**

## Two.

**The only New Zealand university with two elite university alliances in Natural Resource Management, Agricultural and Forestry Sciences, Life Sciences, Food Science and Environmental Science:**

- EuroLeague of Life Science
- Global Challenges University Alliance

### World-class research facilities

By collaborating with the world's best research facilities and universities, it's no wonder Lincoln is renowned for its research.

#### Yili R&D Centre

Yili, one of Asia's largest dairy companies, established its R&D centre at Lincoln's campus in 2015. We work closely with them in researching all facets of dairy, from production to final consumer products.

#### Blinc

Created by five founding partners AgResearch, Landcare Research, Plant & Food Research (all Crown Research Institutes), DairyNZ, and Lincoln University – Blinc Innovation is focused on some of the most significant opportunities (and challenges) facing New Zealand's primary industries, with potential for enormous economic, social and environmental benefit.

#### Growing solutions

With a focus on the areas of land, food and ecosystems, our researchers are helping solve global challenges for people, planet and prosperity. Find out more at [research.lincoln.ac.nz](http://research.lincoln.ac.nz)

### Great local career prospects

The economic development and employment rate is much higher in Canterbury than other parts of New Zealand, full of potential and promising a bright future.

### It pays to specialise

Lincoln focuses on agriculture, food and the whole value chain (including the environment, sustainable development, production, processing, supply chain, marketing, trade, and the end user).

That focus includes land planning and sustainable development – landscape

architecture, environmental planning, land and property management, tourism and recreation management.

What does that add up to? Graduates who are true experts in their chosen fields.

### Small in numbers, big in performance

In numbers of students, Lincoln is the smallest in New Zealand. But when it comes to student performance, we come out on top.

- Highest ratio of Master's and PhD students in New Zealand: 15%
- Highest ratio of international students in New Zealand (48%) and around 1500 international students from more than 80 countries.
- Best teacher to student ratio in New Zealand 13.5:1
- New Zealand's most successful research university\*

\*In research income per full-time academic staff member.

### Highly recognised by government and industry

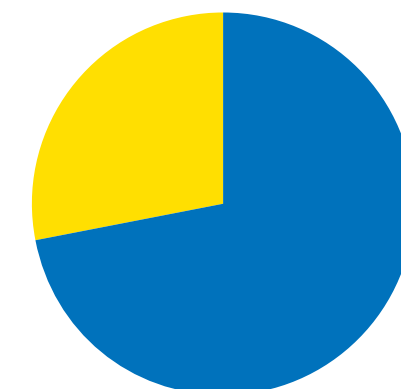
Lincoln University has always had a close relationship with New Zealand industry and national development. And that is especially true today.

Over half of our bachelor degrees have practical work and field trip components featuring lectures and research projects relevant to industry.

Lincoln consistently achieves the highest employment rate of any NZ university.

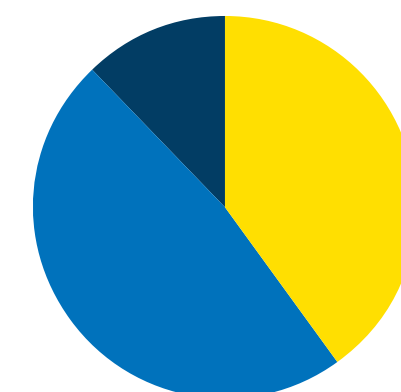
90% of our 2017 graduates are employed or in further study.

Lincoln is recognised by professional bodies in New Zealand and around the world and our graduates are always in demands



**72% Domestic  
28% International**

Student split



**38% Postgraduate  
47% Undergraduate  
15% Pre-undergraduate**

Qualification split

# 3484

Total students





# Practical Information



# Student support

Leaving your home country to attend university overseas is a huge step. And it's easy to feel a bit confused or lost when you get there. At Lincoln, we understand what you're going through, so we have lots of special support for international students on campus. And our friendly staff are here to help you feel settled and at ease.

## International Office

The International Office promotes and markets Lincoln University to prospective international students and works with its global network of education agents to provide high quality customer service. They also support students with programme and course advice and help students through the University's applications and enrolment processes. The team is proud to deliver essential pastoral care to international students during their time of study at Lincoln University.

## International Student Advisors

The friendly and helpful team who can help you with any issue or concern, whether it's personal, social or cultural. If it's a legal, financial or academic issue, we can point you in the right direction.

## Student Administration

Our team is ready to assist you with your student visa applications, enrolments, medical insurance, graduation, practical work and exam queries.

## LUSA

The Lincoln University Students' Association (LUSA) provides representation and support for students. They also organise events and coordinate clubs and sports groups to keep you busy and having fun throughout the year.

## Student Health and Support

We know sometimes things can seem daunting, or life can present an obstacle or two. And we really want you to know that we care and you don't have to deal with things alone. So we offer a full range of health and support services available on campus to make sure your time at Lincoln is a happy one.

## Chaplaincy

Many international students come from a faith background, such as Christian, Muslim, Hindu, Buddhist and many more. We are here for all of you, as well as those without a faith or religious background. The Lincoln Chaplaincy team offer pastoral and spiritual support anytime you need it.

## Learning Support

Located in our iconic Ivey Hall, the Learning, Teaching and Library team are here to help you develop your academic ability with learning support, access to our extensive collection of books and databases, study spaces and rooms, and much more.

## Careers and Employment Advice

Sometimes choosing the right career path is easy. But if it's not, our experienced advisors and extensive resource information can help you make an informed decision. Lincoln students and graduates can access Lincoln Careerhub, a site that provides information about the graduate job market, internships, graduate programmes, scholarships, immediate vacancies and employer events. Plus we also host a range of recruitment events throughout the year featuring employers on campus for drop-ins, information sessions and networking.



**The lecturers and staff are highly experienced and very knowledgeable with their courses and divisions. They are also very helpful and never hesitate to answer all of my questions. Coming to Lincoln is my best decision ever.**

**Dewi Soegiarto**  
Bachelor of Science  
(Indonesia)





# Key information

Lincoln has a full network of support for international students to make your transition to New Zealand a truly life changing experience. We also use a number of other agencies for advice – see below.

## Code of Practice

Lincoln University has agreed to observe and be bound by the Education (Pastoral Care of Tertiary and International Learners) Code of Practice 2021. Copies of the code are available from the NZQA website: [nzqa.govt.nz](https://nzqa.govt.nz)

## Immigration and your student visa

Full details of immigration requirements, advice on rights to employment in New Zealand while studying and reporting requirements are available from Immigration New Zealand and can be viewed on their website: [immigration.govt.nz](https://immigration.govt.nz)

## Eligibility for health services

Most international students are not entitled to publicly funded health services while in New Zealand. If you receive medical treatment during your visit, you may be liable for the full costs of that treatment. Full details on entitlements to publicly funded health services are available through the Ministry of Health and can be viewed on their website: [moh.govt.nz](https://moh.govt.nz)

## Accident insurance

The Accident Compensation Corporation provides accident insurance for all New Zealand citizens, residents and temporary visitors, but you may still be liable for all other medical and related costs. Further information can be viewed on the ACC website: [acc.co.nz](https://acc.co.nz)

## Medical and travel insurance

International students (including group students) must have appropriate and current medical and travel insurance while in New Zealand.

All New Zealand universities, including Lincoln University, endorse the insurance plan known as Studentsafe University. You can read more about the policy, premiums and contact details for claims: [lincoln.ac.nz/insurance](https://lincoln.ac.nz/insurance). The Studentsafe University policy can be purchased from Lincoln University when you complete your enrolment.

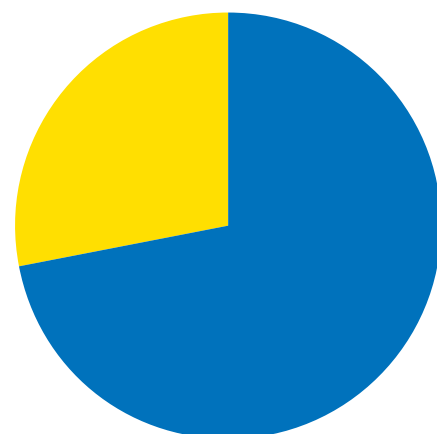
## Lincoln's global network

Once you successfully complete your studies at Lincoln University, you become what is known as an alumnus (male), alumna (female) or alumni (plural) of the university, meaning a former student.

You'll be part of a global community of alumni, able to connect with each other and friends of Lincoln University.

All students who complete a course of study are automatically members of the Lincoln University Alumni Association and membership is free.

Find out more at [alumnilinc.lincoln.ac.nz](https://alumnilinc.lincoln.ac.nz)



28%

of students at Lincoln University are international students



## Christian Garcia Cedeno

### Diploma in University Studies

Christian Garcia might be studying remotely at home in Mexico, but he has his future sights firmly set on a career in New Zealand.

Studying towards a Bachelor of Science with a Major in Biology as well as Conservation and Ecology, he would “love to be able to work in New Zealand after finishing my degree either studying the fauna or working in a lab focusing on biochemistry and/or genetics.”

He started his study at Lincoln through the Certificate in University Studies (CUS) online, excelled and then moved quickly onto the Diploma of University Studies (DUS). Christian said learning online was a challenging “but very fun and rewarding experience”.

“The course was very well organised, the tutors were remarkably thorough and they had an excellent disposition towards answering any inquiries.

He chose Lincoln University mainly because it was recommended to him “as one of the best universities for studying conservation and ecology” and because of its focus on field and laboratory research.

“Another thing that caught my eye was that I was told it has one of the highest employment rates after graduation, as well as plentiful opportunities to start engaging in summertime jobs related to my field.”



# Study abroad & exchange

## Study Abroad

Lincoln University offers a Study Abroad programme where you can attend Lincoln University for a semester or year and transfer the credits back to your degree at home. Studying overseas is a uniquely rewarding experience. You will develop a new perspective on life, grow your knowledge of your chosen subject and have the chance to explore a different part of the world.

## Exchange partners

We have a number of agreements with universities around the world. If you are studying at one of our partner universities below, please talk to your student exchange office about any further opportunities available to you as part of the Study Abroad programme.

### Austria

- University of Natural Resources and Life Sciences, Vienna

### Brazil

- University of Sao Paulo

### Canada

- University of Guelph

### Czech Republic

- Czech University of Life Sciences, Prague
- Mendel University

### Denmark

- Copenhagen Business School
- University of Copenhagen

### Finland

- Lahti University of Applied Sciences

### France

- ENSAT
- Toulouse INP-ENSAT

### Germany

- Geisenheim University
- University of Hohenheim
- Rhine-Waal University of Applied Sciences

### Indonesia

- University of Brawijaya

### Ireland

- University College Dublin

### Netherlands

- Wageningen University



1 Hooker Valley Track, Mt Cook National Park.

2 Study Abroad students at Emerald Lakes, a stunning part of Tongariro Alpine Crossing.



### Norway

- Norwegian University of Life Sciences

### Sweden

- Swedish University of Agricultural Sciences, Uppsala
- Umeå University

### Uruguay

- University of Montevideo

### United Kingdom

- University of Reading

### United States of America

- Colorado State University
- Oregon State University
- Purdue University

### Uruguay

- University of Montevideo

**Contact: The International Office**

**Email: [studyabroad@lincoln.ac.nz](mailto:studyabroad@lincoln.ac.nz)**

**Phone: +64 3 423 0000**

# Accommodation

## Welcome home

There's nothing like coming all the way from your own country and finding a place where you feel just as at home.

That's exactly what you'll find with Lincoln's on-campus accommodation. It's a friendly village-like atmosphere where students thrive and make lifelong friendships.

Our campus is home to around 600 students during the university year and you can choose between catered Halls of Residence, self-catered flats or houses.

Students living on campus say it's a fantastic way to enjoy their time at Lincoln. You'll make lots of friends; there's always something fun going on and you're just a short walk away from lectures, gym, shops, cafés and bars.

If living off campus is more your style, regular bus services to and from central Christchurch make that easy too. Lincoln Village, Riccarton and Rolleston (suburbs in Christchurch) are popular options for student flats because of their convenience and exciting student community.

**Find out more at [lincoln.co.nz/accommodation](http://lincoln.co.nz/accommodation)**

	Fully-catered	Self-catered: The Junction	Self-catered: Farm Road	Self-catered: Farm Road (with ensuite)
Academic year (39 weeks)	\$17,261.00	\$8,775.00	\$7,800.00	\$9,750.00

Prices as at print date.







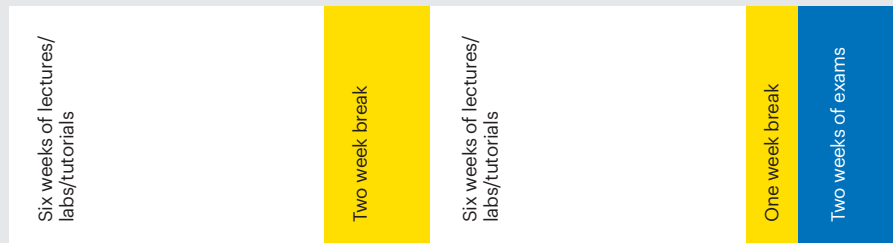
# Study at Lincoln



# Semester & academic year

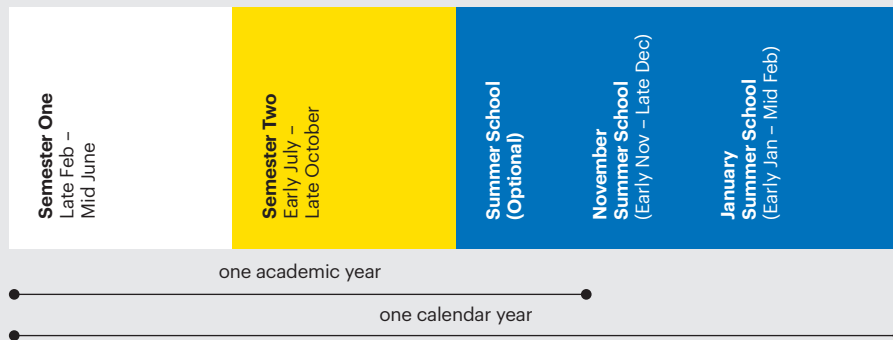
## How a semester works for a typical student

The University year is split into two semesters, with a two-week break in the middle. At the end of each semester there's a one-week study break, followed by two weeks for exams. Each semester looks like this.



## One academic calendar year

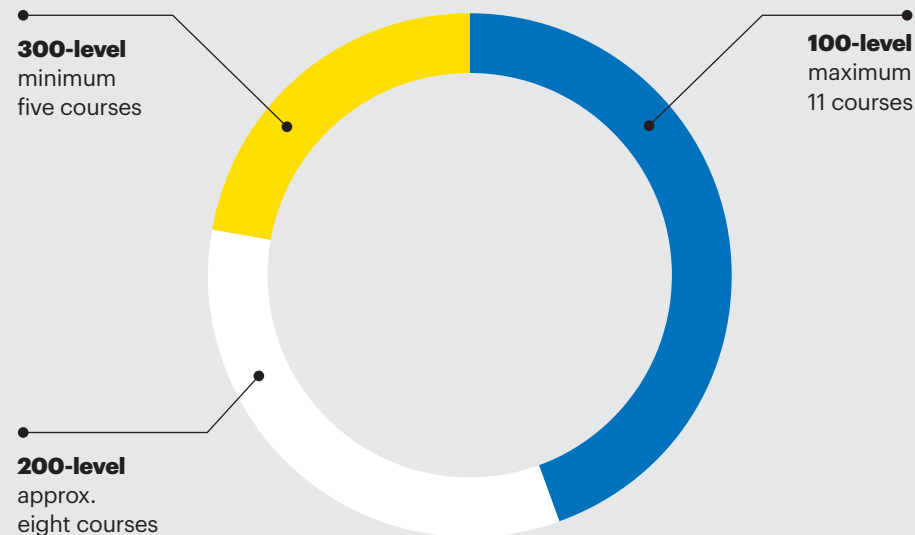
As a full time student you will normally study four courses a semester. Each course is usually equal to 15 credits, and you need a total of 360 credits for a three-year degree. Postgraduate students will normally study three courses equal to 20 credits each.



## Outline of a three-year degree

Courses are at different levels. Students start with courses at 100 level. These are sometimes referred to as "first year courses" but can be taken in other years. They generally prepare you for studying courses at the 200 and 300 levels, which are taken in your second and third years.

\*Summer school is available for some courses from November. Visit [www.lincoln.ac.nz/Study/Summer-School/](http://www.lincoln.ac.nz/Study/Summer-School/) for more.



## Workload

Students are required to spend between four to five hours per week on each course (including classes, labs and tutorials), a total of 16-20 hours per week. Students should also spend four to five hours per week on self-study. Therefore, at least 40 hours of studying is required per week. One credit = 10 hours.

The Bachelor of Agricultural Science, Landscape Architecture, Land and Property Management, and Environment Policy and Planning degrees include 480 credits. The rest of Lincoln University's Bachelor degrees are made up of 360 credits.

## Lincoln grading system

Lincoln grading system							
A+	90-100	B+	75-79	C+	60-64	D	40-49 (Fail)
A	85-89	B	70-74	C	55-59	E	0-39 (Fail)
A-	80-84	B-	65-69	C-	50-54		

## Online and remote learning

Lincoln University offers both online and remote learning study options.

Our online options are designed to be fully internet-based. You can study in your own time, at home or in a location of your choosing, either full-time or part-time.

Remote learning features a range of distance education programmes that will allow you to study off-campus until the option to study at Lincoln is available to you. Again you can do part-time or full-time study, with all lecture videos, notes, materials available online.

It allows you to start your study, and your Lincoln journey, while still offshore, so you have already begun your programme when you are able to join us in New Zealand.

You'll still enjoy the Lincoln experience through our connected support services as we help you to explore and cultivate your potential.

Programmes available online:

- Certificate in University Studies
- Diploma in Horticultural Business
- Postgraduate Certificate in Commerce
- Postgraduate Certificate in Environmental Management
- Postgraduate Diploma in Environmental Management
- Master of Business in Global Management and Marketing
- Master of Environmental Policy and Management
- Master of Wine and Viticulture.

For more information about the online or remote learning option please contact [international@lincoln.ac.nz](mailto:international@lincoln.ac.nz)



# Undergraduate pathways

Lincoln University provides accelerated and flexible pathway programmes to an undergraduate degree:

- Diploma in University Studies 2
- Diploma in University Studies 3
- Certificate in University Studies

Lincoln University accelerated degree pathway example



## Features

- The Diploma of University Studies (DUS) is made up of two or three semesters. There are three intakes per year – February, July, November.
- The Diploma of University Studies 2 (DUS2) takes two semesters. DUS2 is the only direct pathway into level 100 papers by a New Zealand university, and approved by New Zealand's national academic body.
- DUS and regular bachelor students will study the same course at level 100.
- The Diploma of University Studies 3 (DUS3) takes three semesters. The level 100 paper taken in semester one can be cross credited into semester two.
- Students with all A grades in Certificate in University Studies (CUS) are able to move directly into DUS2, saving one semester.
- There is a 90% pass rate for DUS2 and DUS3.
- If a student does not pass an individual 100 level course, it may still be possible to move onto the second year of degree study.
- Compulsory free tutorials take place after class.
- The Certificate in University Studies can be completed fully online. Courses in the Diploma of University Studies programme can also be completed remotely. Please contact us for more details.

## DUS2 Diploma in University Studies 2

Programme	DUS 2		Bachelor Degree Year 2		Bachelor Degree Year 3
Course of Study	8 x 100 level courses	→	8 x courses	→	8 x courses
Period of Study	1st Semester 2nd Semester	→	3rd Semester 4th Semester	→	5th Semester 6th Semester

### Admission requirements

- High school qualification\* or;
- All A grades in Certificate in University Studies, and;
- IELTS 5.5 (no band under 5.5) or equivalent.

\* Refer to website for full entry requirements: [www.lincoln.ac.nz](http://www.lincoln.ac.nz)

### Intake dates and duration to complete Bachelor

- Feb/Jul start – 3 years
- Nov start – 2.5 years\*

\* Only possible if enrolling in Bachelor of Agribusiness & Food Marketing, Bachelor of Commerce, Bachelor of Sports & Recreation Management or Bachelor of Tourism Management

## DUS3 Diploma in University Studies 3

Programme	DUS 3			Bachelor Degree Year 2		Bachelor Degree Year 3
Course of Study	3 x pre-degree courses 1 x 100 level course	8 x 100 level courses	→	8 x courses	→	8 x courses
Period of Study	1st Semester	2nd Semester 3rd Semester	→	4th Semester 5th Semester	→	6th Semester 7th Semester

### Admission requirements

- High school qualification\* and;
- IELTS 5.5 (at least 5.5 for Reading and Writing, and no other band under 5.0) or equivalent.

\* Refer to website for full entry requirements: [www.lincoln.ac.nz](http://www.lincoln.ac.nz)

### Intake dates and duration to complete Bachelor

- Feb/Jul start – 3.5 years
- Nov start – 3 years.

## CUS & DUS3 Certificate in University Studies & Diploma in University Studies 3

Programme	CUS	DUS 3			Bachelor Degree Year 2		Bachelor Degree Year 3
Course of Study	4 x pre-degree courses	3 x pre-degree courses 1 x 100 level course	8 x 100 level courses	→	8 x courses	→	8 x courses
Period of Study	1st Semester	2nd Semester	3rd Semester 4th Semester	→	5th Semester 6th Semester	→	7th Semester 8th Semester

### Admission requirements

- High school qualification\* and;
- IELTS 5.0 (no band under 5.0) or equivalent.

\* Refer to website for full entry requirements: [www.lincoln.ac.nz](http://www.lincoln.ac.nz)

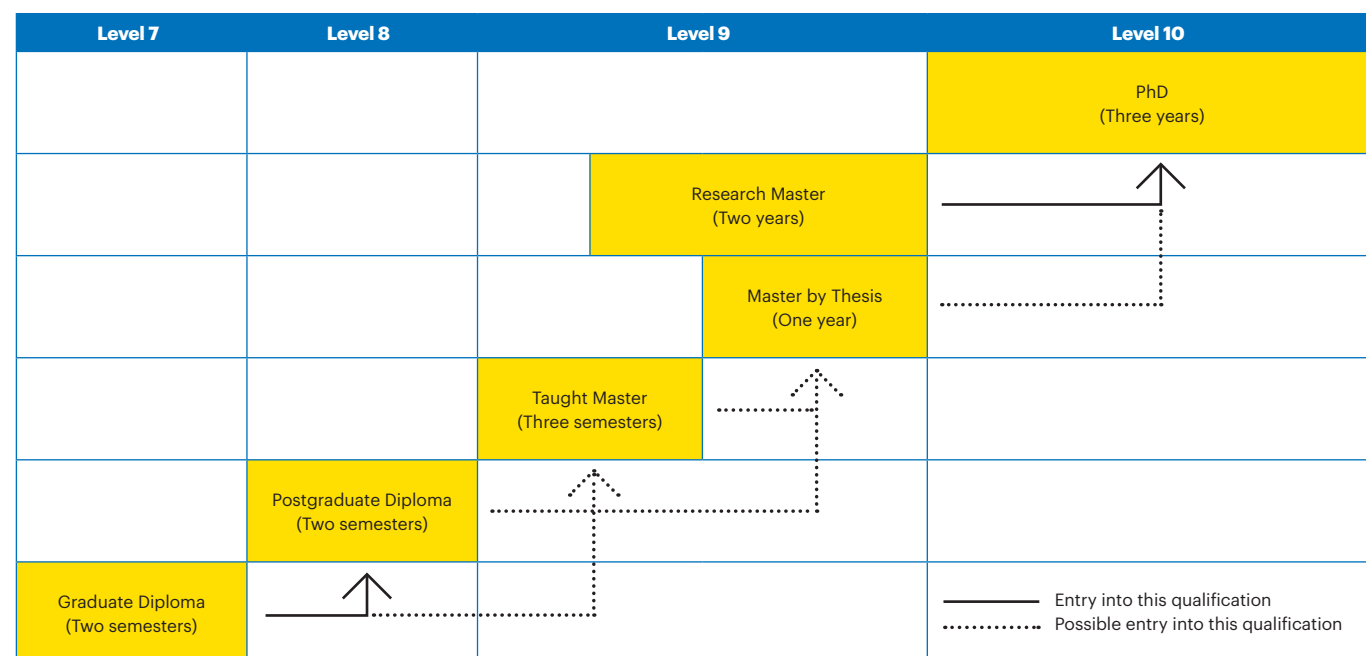
### Intake dates and duration to complete Bachelor

- Feb/Jul start – 4 years
- Jul start – 3.5 years (includes summer school)
- Nov start – 3.5 years.



# Postgraduate pathways

A postgraduate qualification from Lincoln University offers you the opportunity to pursue a chosen area in more depth or specialise further. From Postgraduate Diplomas through to a PhD, we have the perfect qualification to help you grow further.



\* Some programmes require a relevant academic background. For more up-to-date entry requirements, refer to [www.lincoln.ac.nz](http://www.lincoln.ac.nz)

# English language school

## Intake dates 2022:

14 Mar, 20 Apr, 23 May, 4 Jul, 1 Aug, 5 Sept, 10 Oct, 14 Nov

**If your English needs to improve before you begin your studies, we offer a special school that will help you reach the level you need to be:**

## English for Academic Purpose (EAP)

- The University's own English school has small class sizes
- Your pathway into any of Lincoln's programmes
- You are tested every four weeks, and if you pass, you can begin your programmes
- The most flexible EAP course of any NZ university.

Depending on your English level, you can study for 12 weeks, 16 weeks, 20 weeks, or 24 weeks (a four-week module). If you meet the required level before your enrolled period finishes, your remaining tuition fee can be transferred to the other programmes.

Students must have at least IELTS 4.0 to be eligible.

Our EAP course gives you the language and skills necessary for university study at undergraduate or postgraduate level. You can choose components to prepare for academic study, including:

- Reading academic books and journals
- Writing formal reports and research essays
- Studying academic vocabulary
- Using library resources
- Presenting academic seminars and talks, and taking notes.

## Graduate Certificate in Academic English (GCAE)

GCAE is the only New Zealand university English language programme at postgraduate level approved by the Committee on University Academic Programmes (CUAP) and is also the New Zealand Qualifications Authority (NZQA) Level 7. The objective is to provide an alternative to IELTS. More importantly, GCAE prepares you well for future postgraduate level study.

You don't need to take IELTS again after completing GCAE to continue postgraduate level programmes at Lincoln. It includes the Bachelor of Landscape Architecture (Graduate Entry); Graduate Diploma/Certificate; Postgraduate Diploma/Certificate; Masters Degree (research/taught); and PhD.

This certificate meets the English Language requirement of IELTS 6.5 of other New Zealand Universities.

Length: 16 weeks

Content	
Module 1: Weeks 1-12	ACEN301 (3 modules, total 12 weeks); Assessment after each module; Student may reach the requirement after two modules, and can proceed to ACEN303 in advance.
Module 4: Weeks 13-16	ACEN303 (one module, total four weeks) Includes literature review and research study skills

If you reach the required level within 12 weeks, then the remaining tuition fee can be transferred to your specified academic programme. If you reach the postgraduate required level, you can study the four-week ACEN303 course to prepare for further studies.

## Entry requirements

1. Bachelor Degree
2. IELTS 6.0 (no individual band is below 5.5)
3. If the student hasn't reached IELTS 6.0, they can study EAP and reach IELTS 6.0 before moving into GCAE.

## English further study awards

Any student who successfully completes a minimum of 12 weeks of EAP will receive a fees rebate award to the value of \$5,400 NZD when you enrol the next academic programme.

## Small class sizes

Academic English classes at Lincoln usually have about 12 students. Small class sizes mean you have the opportunity to speak with others and ask questions. It also means our teachers have the opportunity to dedicate more time to helping you.

## Full-time study

At Lincoln you will have 20 hours per week in class. In addition, you will be required to complete homework and reports. All of this is to help prepare you for your future studies. You will learn how to read, write and communicate in an academic context.



Week	Monday	Tuesday	Wednesday	Thursday	Friday
9.00-9.50	<b>English Grammar</b> Complex sentence structure	<b>Academic Writing</b> Academic essays, persuasive writing	<b>Academic Writing</b> Coherence & cohesion	<b>Academic Writing &amp; Grammar</b> Review of structure and grammar quiz	<b>Reading Test</b>
10.00-10.50				<b>Reading &amp; Vocabulary</b> Spelling Test	<b>Research Skills</b> How to write an effective report
11.10-12.00	<b>Reading / Weekly Vocabulary</b>	<b>Reading</b> Critical reading	<b>Reading</b> Academic reading skills and strategies	<b>Listening / Speaking</b> Asking questions in an academic context	
12.00-1.00	LUNCH				
1.10-2.00	<b>Listening / Speaking</b> Listening to academic lectures	<b>Listening / Speaking</b> Giving a personal introduction	<b>Writing Tutorial</b> Feedback on your writing	<i>Individual Study &amp; Teacher Support</i>	<i>Individual Study &amp; Teacher Support</i>
2.10-3.00			<i>Individual Study &amp; Teacher Support</i>		

Sample weekly schedule (on campus)



### Daryl Streat – Head of Programme for English Language

As the Head of Programme for English Language programmes at Lincoln, Daryl and his team prepare you for your studies and help you meet our English Language requirements. Their job is to help you settle into a new academic culture and build awareness of Lincoln's academic English expectations.

Born in New Zealand and raised in Saudi Arabia, Austria, Holland and Taiwan, Daryl is an active member in the community and is the current President of the National Association of English Language Teachers (TESOLANZ).

If you are interested please contact Daryl via his email: [daryl.streat@lincoln.ac.nz](mailto:daryl.streat@lincoln.ac.nz)



### Anita Santosh Gowda (India)

#### Master of Professional Accounting (CPA)

Anita Santosh Gowda has some advice for graduates seeking their dream role - you may need to take another job first but work hard and make contacts and it will happen.

Anita, from India, has just completed her Master of Professional Accounting (CPA) at Lincoln University, and secured her new role as a financial accountant with NXP (National Express Product) in Auckland after initially working as a packer at the company.

She chose to come to Lincoln as it was offering MPA with the CPA accreditation.

"It is the only university, which was offering two courses at the same time, a master's degree with a professional degree."

She enjoyed the "beautiful buildings and spacious rooms" on campus and using the LU Gym, and had special praise for the Postgrad Space where she could study until late, as she lived with five other flatmates at the time.

There were a lot of course options, very supportive and helpful lecturers and staff, a host of events and activities, job fairs, and games and quizzes which she enjoyed participating in.

She described Lincoln as beautiful, calm, and unspoiled and recommended to other students to come to New Zealand "as it is a very beautiful country to live".

### English for Academic Purposes (Distance Mode)

English for Academic Purposes (Distance Mode) means you can work to meet our English language requirements for degree study from home, and go straight into your undergraduate or postgraduate study when you come to New Zealand.

You will learn about academic writing, academic reading, and report writing, enabling you to meet the English language requirements at Lincoln University and prepare for successful study in a university environment. Each week, there will be 15 live-streamed classes via Zoom. Each subject (academic writing, academic reading and report writing) will have about 3-5 live classes per week. In addition, there are learning support classes.

The programme will run from 2pm - 6pm (New Zealand Time) Monday to Friday.

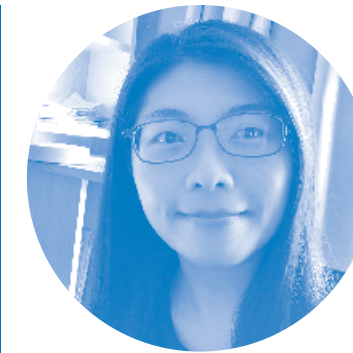
### Assessments

Each week there are tasks for each class to help you learn and improve your skills. These include assignments, forums, and quizzes. Three assessments contribute to your final grade:

- A reading test
- Writing tests (one essay, one data description)
- A research report (focused on in Research Skills classes).

Your live online classes will include reviewing preview materials, clarifying and explaining class content and completing activities to ensure you understand the subject material.

There are 37.5 learning hours per week, made-up of 15 live classes which are 50 minutes long. Writing, reading, and research classes have preview tasks and homework, use online language learning tools, and have quizzes and forums. You will also work on your research report.



### Xiaohong (Maggie) Yang (China)

Xiaohong (Maggie) Yang, has found studying the online EAP has allowed her to follow her "original learning plan" despite the disruptions of travel due to Covid-19. Studying from Shanghai, China, she recommends the online EAP programme to students who cannot come to New Zealand yet. After finishing the EAP, she will be able to continue her study in the Master of Professional Accounting (CPA) programme at Lincoln University, rather than having to wait until she can travel.

**There are some teaching tools to help enliven the learning atmosphere in the online classroom, and if you have any questions, you can send WeChat messages to the teacher, and they help you resolve any issues.**

Xiaohong (Maggie) Yang (China)



# Areas of specialisation

We have 10 areas of study that Lincoln specialises in. These areas of specialisations are designed to help you best identify what you need to study to accomplish your goals. A qualification from one or more of these areas will give you the skills to grow your future.

## Agriculture, Horticulture & Viticulture

Primary production is the foundation of our national economy and that is truer now than ever. Demand for university graduates well exceeds supply and our students are sought-after across all areas of the sector.

As New Zealand's leading agricultural university, we have a long history of supporting the land-based industries to increase their productivity and sustainability.

This trend is set to continue, with a 70 percent increase in global food production required by 2050 to feed an additional three billion people worldwide.

Thousands of extra jobs will open up, with skyrocketing international demand for New Zealand exports such as meat, milk and wool.

There's never been a better time to enter the industry.

Our agriculture and horticulture programmes cover a wide range of disciplines, including biology, chemistry, and plant, animal and soil science, as well as management skills. The practical experiences we offer set us apart from other universities and prepare you to make an immediate difference to the industry.

Employment opportunities are wide-ranging, from farm and horticultural consultancy to rural banking and valuation careers, agribusiness roles, and working for the fertiliser, seed and livestock industries.

## Business

Our business programmes open up a world of opportunities in a broad range of industries as diverse as agri-food, tourism, property, farms and global value chains.

We tailor our degrees to the business sectors, giving you a strong understanding of the concepts and industry-specific knowledge valued by employers. Our programmes produce work-ready graduates with a unique combination of skills that allow them to easily find employment or run their own businesses.

Our real-world examples and practical experiences will give you the skills to make an immediate difference in your chosen business career.

You'll learn from some of the best researchers and lecturers in the field and have access to the most up-to-date industry knowledge and many of our programmes, such as the Master of Professional Accounting degree with the CPA, have industry accreditation.

### More reasons to study Business

CFA accreditation of the Master of Business (Finance) programme.

Lincoln hosts New Zealand first Yunus Social Business Centre, which aims to benefit of poor or disadvantaged members of society.

Our Bloomberg Room allows you to get a taste of market trading.

## Environment

Studying environment with us means understanding the big picture in terms of sustainability, as well as focusing on some of the most complex issues facing the world today.

Our environmental graduates are in major demand, with many opportunities for well-paid employment in areas such as policy development, planning and impact assessment.

More and more companies are choosing to operate sustainably and minimise their impact on the environment, while raised environmental awareness and demand for greener production have increased employment opportunities in non-environmental industries.

Additionally, public and political interest in environmental issues, such as concerns over water allocation and climate change, is creating more opportunities for employment in environmental management.

At Lincoln, you'll learn from some of the best researchers and lecturers in the field and gain access to the most up-to-date industry knowledge, which is very attractive to a broad range of employers.

Throughout the world, people are faced with an ever-widening range of serious concerns such as resource depletion, pollution of air and water, and global warming. Decisions made now will have implications on the sustainability of the natural environment and on economic, social and cultural development.

## Food, Wine & Beer

Our food, wine and beer courses will help to prepare you for fulfilling careers all over the world.

The food science and innovation programmes allow you to explore the latest ideas and knowledge, from ingredients, nutrition, processing and engineering, all the way through to the development of new food products, including formulation and commercialisation.

Meanwhile, Agribusiness and Food Marketing teaches a savvy approach to food production that focuses on balancing finite resources and a growing global population with consumers' increasing demand for high-quality products.

Alternatively, you could prepare for entry into the wine sector, with programmes that have been instrumental in developing the highly successful New Zealand wine industry.

We're also home to the only single-semester beer brewing course in New Zealand. This offers an invaluable opportunity to enter a growing sector and gain the in-depth knowledge required for career success.

We offer plenty of opportunities for practical work, from group projects in the lab, to individual assignments at private companies. Our degrees are highly rated by industry, as they produce graduates with the practical skills that employers are looking for.

We also lead the way in viticulture, having established the first tertiary-level cool climate wine production programme in the English-speaking world. Our Centre for Viticulture and Oenology is a top research organisation designed to help increase the economic value of the New Zealand wine industry.

Many of our viticulture graduates are working in leading winemaking regions all over the globe, from Auckland to Wanaka, from Asia to the United States of America. We have many industry connections such as with Oceanic Dairy Group, Fonterra, and DairyNZ.

## Accelerated Degree and English Language Pathways

If you need to improve your English or study skills before beginning a degree, our English Language Courses and Accelerated Degree Pathways are for you.

Our English Language qualifications will prepare you for successful future studies or a career and you can use them to meet the English language entry requirements for our academic programmes. The Graduate Certificate in Academic English (GCAE) is specifically aimed at students wanting to enter postgraduate study. Both the Certificate and Diploma of University Studies are ideal if you have narrowly missed out on gaining a tertiary entrance qualification, as they will lead you into a bachelor's degree programme.

The Certificate in University Studies provides language, writing and study skills, along with concepts relating to communication and technology, mathematics, economics and environment. Once you have successfully completed the certificate, you can transfer to the Diploma in University Studies.

The diploma takes you from a predegree stage to entry into the second year of a bachelor's degree. Depending on your entry qualifications, you can complete it in two or three semesters. You'll develop your academic skills and study a range of courses from our bachelor's programmes.

## Landscape Architecture

Landscape architecture uses a combination of science and art to create outdoor spaces that promote better ways of living.

There's a huge industry demand for landscape architects. The New Zealand market is growing quickly as more businesses realise the invaluable qualities that landscape architecture principles can bring to a project.

In 1969, we founded New Zealand's first professional landscape architecture qualification in the field. When you attend our internationally recognised School of Landscape Architecture, you'll work with some of the world's leading practitioners on a broad mix of design, ecology, planning, field tours and real-world projects.

You'll enjoy a dedicated space on campus with beautifully designed studios, room to install equipment, and space to lay out plans for design work and model construction so that you can develop your creativity to its fullest potential.

Our landscape architecture graduates are sought-after all over the world because of the experience they gain during their studies. They're viewed by industry as the cream of the crop and are able to immediately begin successful careers after graduating.

We can introduce you to networking opportunities and help you to develop a strong professional ethos.

### More reasons to study Landscape Architecture

Our Bachelor of Landscape Architecture (BLA) and Master of Landscape Architecture (MLA) are formally accredited by the New Zealand Institute of Landscape Architects (NZILA) and the International Federation of Landscape Architects (IFLA). This means our graduates are eligible to become internationally recognised and registered professionals who end up working on major sites around New Zealand, Asia and the world.



## Property & Valuation

Our comprehensive property programme has wide accreditation by professional bodies, highlighting its leading position in New Zealand.

We have been teaching property for 80 years and are highly regarded by the industry.

You'll work with some of the most experienced lecturers in the field, and gain access to up-to-date knowledge from industry professionals, who also deliver parts of the programme. The sector employs a huge number of Lincoln graduates. In fact, our Bachelor of Land and Property Management programme has a 100% employment rate, as the courses are highly relevant to the sector and allow you to gain applied skills during required periods of practical work.

Additionally, our close ties with a huge range of businesses and professionals, many of them Lincoln graduates, mean you can form valuable connections during your studies.

We'll provide you with the ability to make important decisions in both the urban and rural property fields — decisions that benefit businesses, consumers, society and the environment.

Best of all, every country is made up of properties that need to be managed and valued, so a property degree can take you all over the world.

## Science

Our science programmes will prepare you to contribute to the sustainable management of land, water, air and the country's abundant natural resources.

There's a lot of demand for Lincoln science graduates in many industries, particularly areas such as agriculture, food science, environment and conservation.

Across all science disciplines, we use real-world examples and practical experiences to give you the skills to make an immediate difference in your chosen field.

Hands-on learning opportunities with leading scientists and industry professionals will get you a foot in the door as far as career options are concerned and the skills we teach are attractive to many employers.

Our strong research presence offers a broad world view of how science can be used to solve real problems, while our course content is highly focused, providing both theoretical and practical knowledge.

## Sport & Recreation

You can turn your love of sport and recreation into a career. Practical course content, friendly lecturers and connections with various organisations, which will give you a foot in the door before you complete your studies.

A degree in this area from Lincoln can open up a world of career opportunities in an exciting and fast-moving industry. The sector desperately needs more graduates and we offer a wider range of sport and recreation subjects than any other New Zealand university.

The career opportunities are diverse, from working in non-profit or professional sporting organisations to forging a career in outdoor recreation, public health, or the management of sports events and facilities.

The market value of the sector in New Zealand is estimated at more than \$5 billion, with gains in productivity and health benefits valued at over \$1 billion.

We'll supplement your practical experiences with a theoretical knowledge of sport and society, governance, event and people management, and issues associated with managing community parks and sport and recreation services.

Our industry partners are well aware of the value of our programmes. Many organisations have hired Lincoln graduates and found them to be immediately work-ready, a quality that is supremely attractive to employers.

## Tourism

There has never been a more exciting time to become a tourism professional. The sector is changing dramatically and will continue to do so over the next few years. Studying for a tourism degree now will put you at the forefront of this change and allow you to contribute to growing a more sustainable industry.

Our programmes are designed in consultation with industry to give you a broad knowledge of the sector at all levels. We provide knowledge and skills essential for a professional tourism career, with a range of programme options offering detailed insights into planning, events and business management.

University-educated tourism professionals continue to be in great demand, so a degree will help you to stand out from the crowd when seeking employment.

Our graduates are highly regarded by the sector, as they enter the job market with well-rounded tourism experience and have a strong grasp of the industry as a whole, from insights to practical applications.

We enjoy a close relationship with the sector, particularly as far as research programmes are concerned, so you'll have many opportunities to form valuable connections before you even finish your studies.

When you begin your career, you will be thoroughly prepared to hit the ground running, giving you the confidence you need to make an immediate difference to the industry.

### More reasons to study Tourism

Tourism is one of the biggest industries in New Zealand.

We enjoy a close relationship with the Tourism sector, particularly as far as research programmes are concerned, so you'll have many opportunities to form valuable connections before you even finish your studies.





# English language requirements

Lincoln qualification	Lincoln University English Language	IELTS (Academic)	TOEFL iBT <sup>^</sup>	Cambridge English: Advanced (CAE) and First (FCE)	Pearson Test of English (Academic)	NZ Certificates in English Language (NZCEL)	Language Cert
PhD Master's Degrees Postgraduate Diplomas Postgraduate Certificates Graduate Diploma (in all disciplines except for Commerce) Graduate Certificates (in all disciplines except for Commerce)	GCAE or LU EL 70%	6.5 overall, with no individual component less than 6.0	Overall score of 80 (with at least 21 in Writing and 18 in Speaking)	Overall score of 176, with no individual component less than 169	58 overall score - with no communicative skill less than 50	Level 5 (Academic or Professional Endorsement)	C1 Expert IESOL (LRWS) with HIGH PASS and no less than Pass in each skill or C2 Mastery IESOL (LRWS) with PASS and no less than Pass in each skill
Bachelor Degrees Undergraduate Diplomas Graduate Diplomas in Commerce Graduate Certificate in Commerce Bachelor Degrees	LU EL 65%	6.0 overall, with no individual component less than 5.5	Overall score of 60 (with at least 18 in Writing)	Overall score of 169, with no individual component less than 162	50 overall score - with no communicative skill less than 42	Level 4 (Academic Endorsement)	C1 Expert IESOL (LRWS) with PASS and no less than Pass in each skill
Diploma in University Studies – two semester pathway	LU EL 60% with no individual component less than 60%	5.5 overall, with no individual component less than 5.5	Overall score of 53 (with at least 18 in Writing)	Overall score of 169, with no individual component less than 162	42 overall score - with no communicative skill less than 42	Level 4 (General, Workplace or Academic Endorsement)	B2 Communicator IESOL (LRWS) with HIGH PASS and no less than Pass in each skill
Diploma in University Studies – three semester pathway	LU EL 60%	5.5 overall, with at least 5.5 for Reading and Writing, and no other component less than 5.0	Overall score of 46 (with at least 18 in Writing)	Overall score of 162, with at least 162 in Reading and Writing and 154 in Speaking and Listening	42 overall score, with at least 42 in Reading and Writing and at least 36 in other communicative skills	Level 4 (General, Workplace or Academic Endorsement)	B2 Communicator IESOL (LRWS) with PASS and no less than Pass in each skill
Certificate in University Studies	LU EL 55%	5.0 overall, with no individual component less than 5.0	Overall score of 35 (with at least 14 in Writing)	Overall score of 154, with no individual component less than 154	36 overall score with no communicative score of less than 36	Level 3 (General, Workplace or Academic Endorsement)	B1 Achiever IESOL (LRWS) with PASS and no less than Pass in each skill
Graduate Certificate in Academic English (GCAE)	LU EL 65%	6.0 overall, with no individual component less than 5.5	Overall score of 60 (with at least 18 in Writing)	Overall score of 169, with no individual component less than 162	50 overall score - with no communicative skill less than 42	Level 4 (Academic Endorsement)	C1 Expert IESOL (LRWS) with PASS and no less than Pass in each skill

<sup>^</sup> If supplying a TOEFL test score, please request an original copy to be sent to our institution, code number 9479. Please note the University may request additional evidence of meeting English Language requirements.





# Academic requirements

The following are the minimum entry standards that have been approved for admission and are correct at the time of publishing. Admission staff encourage applicants with alternative qualifications to apply for individual assessments.

	Certificate in University Studies	Diploma in University Studies (three-semester pathway)	Diploma in University Studies (two-semester pathway)	Bachelor
New Zealand	58 NCEA credits at Level 2 or higher (including 30 credits over three approved subjects plus UE literacy and numeracy)  OR Any Lincoln First Level 3 programme successfully completed  <i>Note: Students will not normally be accepted into the Certificate in University Studies directly from Year 12. To enrol in the Certificate directly from secondary school, students should have completed Year 13.</i>	32 NCEA credits at Level 3 or higher (including 20 credits over two approved subjects with a minimum of 10 credits in each subject, plus UE literacy and numeracy)  OR Any Lincoln First Level 4 programme with high achievement  OR Any Lincoln First Level 3 programme with high achievement	38 NCEA credits at Level 3 or higher (including three approved subjects with a minimum of 10 credits in each subject, plus UE literacy and numeracy)  OR Any Lincoln First Level 4 programme with high achievement	<ul style="list-style-type: none"> <li>NCEA level 3 (i.e. a minimum of 60 credits at level 3 or above plus 20 credits at level 2 or above); and</li> <li>A minimum of 14 credits at level 3 or higher in each of three approved subjects; and</li> <li>Literacy – 5 reading credits and 5 writing credits at Level 2 or higher from standards on the NZQA list of university entrance literacy standards; and</li> <li>Numeracy – 10 credits from standards on the NZQA list of numeracy standards, or all three of the following unit standards: 26623, 26626, 26627.</li> </ul>
Bangladesh	Year 12 Higher Secondary Certificate with a minimum GPA of 3.0	Year 12 Higher Secondary Certificate with a minimum GPA of 3.75	Year 12 Higher Secondary Certificate with a minimum GPA of 4.5	Successful completion of at least one year at a recognised university
Brazil	Successful completion of High School (third year of second level)	Certificado de Ensino Medio with an average of 6.0 in four academic courses	Certificado de Ensino Medio with an average of 7.0 in four academic courses	Successful completion of at least one year at a recognised university
China	Senior High School Graduation Diploma, 65% – 69% overall average over three years  OR Year 10 and 11 overall average 70%	Senior High School Graduation Diploma, 70% – 79% overall average over four academic subjects over three years, excluding English, Chinese and politics  OR Gaokao score, 60% – 64%	Senior High School Graduation Diploma, 80% overall average over four academic subjects over three years, excluding English, Chinese and politics  OR Senior High School Graduation plus one year of further study at a recognised institution  OR Gaokao score, 65% – 69%	<p>Gaokao score, 70% or above</p> <p>OR</p> <p>Senior High School Graduation – plus one year of successful study (full time equivalent) at a recognised institution of university standing. 70% score or better (minimum Tier 1 score)</p>
Fiji	School Leaving Certificate, an aggregate of 200 out of 400, over four courses	School Leaving Certificate, with a B in English and Mathematics and passes in all other courses with an overall score of 240 or higher	Fiji Form 7 with an aggregate of 200 marks out of 400 over four subjects	<p>Fiji Form 7 – Aggregate of 250 over 4 courses, with a minimum of 50 in English</p> <p>OR</p> <p>USP Foundation Year – In either Science or Social Science with a grade average of B or higher</p>

	Certificate in University Studies	Diploma in University Studies (three-semester pathway)	Diploma in University Studies (two-semester pathway)	Bachelor
Hong Kong	Successful completion of Secondary 5, minimum. Applications assessed on relevance and achievement.	Hong Kong Diploma of Secondary Education (HKDSE) score of 10, based on an aggregate of the applicant's best four subjects from Core, Category A and Category C electives. Subjects must be at Level 2 or higher.	Hong Kong Diploma of Secondary Education (HKDSE) score of 12, based on an aggregate of the applicant's best five subjects from Core, Category A and Category C electives. At least two subjects must be at level 3 and no subjects lower than Level 2.	Hong Kong Diploma of Secondary Education (HKDSE) score of 15, based on an aggregate of the applicant's best five subjects (i.e. 5 subjects at an average of Level 3 in each subject. Subjects must be from Core, Category A and Category C electives.
India	Year 12 Senior School Certificate, average 50% in four courses  OR Indian School Certificate, Second Division Pass  OR Higher School Certificate, Second Division Pass	Year 12 All India Senior School Certificate with a minimum average of 55% over four academic courses	Year 12 All India Senior School Certificate with a minimum average of 60%	<p>All India Senior Certificate (AISSC) Applicants must have completed 12 years of schooling and a minimum average of 75%, and 60% in English</p> <p>OR</p> <p>India School Certificate (ISC) Applicants must have completed 12 years of schooling and a minimum average of 75%</p> <p>OR</p> <p>One year of study at a recognised university 50% average (minimum)</p>
Indonesia	An average grade of 56 in one of the following:  • National Exam (SMA/SMK) or  • National Exam (SMA/SMK) and School Exam results	An average grade of 71 in either:  • National Exam (SMA/SMK) or  • National Exam (SMA/SMK) and the School Exam results	An average grade of 86 over the National Exam (SMA/SMK) and the School Exam results	<p>Sekolah Menengah Atas (SMA) – Minimum score 8.5</p> <p>OR</p> <p>Successful completion of at least one year at a recognised university</p>
International Baccalaureate (IB)	On application. Minimum IB diploma score 18	On application. Minimum IB diploma score 20	On application. Minimum IB diploma score 22	On application. Minimum IB diploma score 24
Japan	Senior High School, Kotogakko Certificate, overall average 2.5 over 3 years	Senior High School Kotogakko Certificate 3 average over 3 years	Senior High School Kotogakko Certificate 3.5 average over 3 years	<p>High School Diploma (Kotogakko) – Minimum B average</p> <p>OR</p> <p>Junior College Diploma – Successful completion of programme of two of three years' duration</p>
Malaysia	SPM Grade 4 average in five courses  OR Unified Examination Certificate (UEC), maximum 25 over five subjects	Unified Examination Certificate (UEC) with a maximum of 24 over six subjects  OR STPM, 3 passes with at least 1 principal pass  OR SPM, A average	Unified Examination Certificate (UEC) with a maximum of 21 over six subjects  OR STPM, 2 principal passes	<p>STPM – Three Principal passes</p> <p>OR</p> <p>Unified Examination Certificate (UEC) – a maximum of 18 points over six academic subjects</p>



	Certificate in University Studies	Diploma in University Studies (three-semester pathway)	Diploma in University Studies (two-semester pathway)	Bachelor
Pakistan	Year 12 Higher School Certificate 50% average in academic courses	Higher Secondary or Intermediate Certificate 70% average in four academic courses	One year successful study towards a bachelor degree at a recognised institution	One year of study at a recognised university – 50% average minimum
Papua New Guinea	Year 12 Higher School Certificate or Upper Secondary School results with C average or better over five courses, and a minimum C grade in mathematics	Year 12 Higher School Certificate or Upper Secondary School results with 75% average (or an average of B) over five courses, and a minimum C grade in mathematics	Year 12 Higher School Certificate or Upper Secondary School results with 85% average (or an average of A) over five courses, and a minimum C grade in Mathematics  OR Successful two year diploma from a recognised institution	South Pacific Form Seven Certificate – Three or more B grades plus Grade Five or better in PSSC English, and Grade Six or better in PSSC Maths  OR USP Foundation Year – In either Science or Social Science with a grade average of B or higher
Philippines	Successful completion of Grade 12	High School Diploma (Grade 12) with an average 70%, or better	High School Diploma (Grade 12) with an average 85%, or better	One year of successful study at a recognised university
Russia	Certificate of Secondary School: Attestat with 3.0 or higher in four academic courses, including mathematics	Certificate of Secondary School: Attestat with 3.5 or higher in four academic courses, including mathematics	Successful completion of Certificate of Unified State Examination	Successful completion of at least one year at a recognised university
Singapore	GCE O level, passes in four courses	A minimum of two H2 passes in academic subjects	Minimum of three H2 passes with at least two at grade C, or better	H Levels – a minimum of three H2 passes at C grade
South Korea	Successful completion of Year 11 with a minimum overall average 70%	Senior High School with 60% average in four academic courses, or better	Senior High School Diploma with a minimum average of 80% in four academic subjects, or better	University entrance examination – Minimum score 250
Sri Lanka	GCE O levels, C average in four courses	Sir Lankan GCE A levels with at least 2 A level passes	GCE A levels with passes in two academic courses with one at C, or better	Obtained three passes in GCE A level with one grade at C or better, excluding General Studies, OR  Successful completion of at least one year at a recognised university
Taiwan	Senior High School Leaving Certificate 65% average in five courses  OR Year 11, superior grades	Senior High School Year 3 with a 70% minimum average across four academic courses	Senior High School Leaving Certificate with a minimum average of 85% across four courses	One year of successful study at a recognised university  OR Senior High School and a two-year Junior College Diploma  OR Junior High School and a five-year Junior College Diploma

	Certificate in University Studies	Diploma in University Studies (three-semester pathway)	Diploma in University Studies (two-semester pathway)	Bachelor
Thailand	Matayom 6 (Maw 6) with an average grade of 1.5 or better;  OR Completion of Matayom 5 with an average of 3.0 or better in academic subjects	Matayom 6 (Maw 6) with an average grade of 2.0 or better	Matayom 6 (Maw 6) with an average grade of 3.0 or better	One year of successful study at a recognised university or Matayom 6 with an average grade of 3.2
United Kingdom	GCSE or GCE O level, passes in four courses	GCE A levels with passes in two academic courses	GCE A levels with passes in two academic courses with one at grade C or better	GCE 'A' Levels - Three passes with one a C or better
United States of America	High School Graduation Diploma. Applications are assessed on a case by case basis	High School Graduation Diploma with a minimum SAT score of 950, or ACT 18	High School Graduation Diploma with a minimum SAT score of 1110, or ACT 22	High School Diploma and SAT result - At least 50 in each SAT test and a minimum combined score of 1150.
Vietnam	Completion of Year 12 with a 5.0 average; or Completion of Year 11 with a 8.0 average in four academic courses.	Completion of Year 12 with a 6.0 average	Completion of Year 12 with a 7.0 average	One year of successful study at a recognised university or minimum GPA of 8.0 from selected high school

## Post Graduate Entry Requirements

Programme	Academic Entry Requirements
Graduate Diploma	Completion of an undergraduate degree from an accredited higher education institution in New Zealand, or an approved equivalent status (ad eundem statum).
Postgraduate Diploma	A relevant degree with at least a B- average in the 300 level courses and final year (full-time equivalent).
Taught Masters	A relevant degree with at least a B grade average in your 300-level or higher courses and final year overall (full-time equivalent).
Research Masters	A relevant degree with at least a B grade average in your 300 level or higher courses and final year overall (full-time equivalent).
Research Masters by Thesis (one year)	An appropriate and relevant postgraduate honours degree awarded with at least second class honours, division one, or equivalent (B+ grade average or higher).
PhD	An appropriate and relevant postgraduate Honours or Master's degree awarded with at least second class honours, division one or equivalent (a grade average of a B+ or higher). In addition, your previous qualification must include a significant research component, such as a project, dissertation or thesis, requiring at least 40 credit equivalents of research skills in your previous qualification.





# Intakes & tuition fees 2022

Qualifications	Intakes	Tuition (NZ\$)	Length
English for Academic Purposes (EAP)	10 intakes a year	\$5,400 (\$450/week)	12 weeks
English for Academic Purposes (EAP) Online Mode	10 intakes a year	\$4,320 (\$360/week)	12 weeks
Graduate Certificate in Academic English (GCAE)	10 intakes a year	\$7,200 (\$450/week)	16 weeks
Certificate in University Studies (CUS)	Feb, Jul or Nov	\$10,500	1 semester
Diploma in University Studies III (DUS 3)	Feb, Jul or Nov	\$37,300	3 semesters
Diploma in University Studies II (DUS 2)	Feb, Jul or Nov	\$27,300	2 semesters
Diploma in Horticulture*	Feb or Jul	\$22,800	1 academic year
Diploma in Horticulture Management*	Feb or Jul	\$29,700	1 academic year
Diploma in Agriculture*	Feb	\$22,800	1 academic year
Diploma in Farm Management*	Feb	\$29,700	1 academic year
Pathway Certificate for MPA Entry	Feb, Apr, Jul or Sep	\$14,850	1 semester

## Bachelor Degrees

Qualifications	Intakes	Tuition (NZ\$)	Length
Agribusiness and Food Marketing*	Feb, Jul or Nov	\$29,700 per year	3 academic years
Agricultural Science*	Feb or Jul	\$33,000 per year	4 academic years
Agriculture*	Feb or Jul	\$33,000 per year	3 academic years
Commerce – Accounting & Finance / Food & Resource Economics / Global Business / Hotel & Tourism Management* / Marketing / Supply Chain Management	Feb, Jul or Nov	\$29,700 per year	3 academic years
Commerce (Agriculture)	Feb, Jul or Nov	\$29,700 per year	3 academic years
Commerce (Agriculture and Professional Accounting)*	Feb, Jul or Nov	\$29,700 per year	4 academic years
Commerce (Horticulture)*	Feb	\$29,700 per year	3 academic years
Environment and Society*	Feb or Jul	\$29,700 per year	3 academic years
Environment Management	Feb or Jul	\$33,000 per year	3 academic years
Environment Policy and Planning (Honours)	Feb or Jul	\$33,000 per year	4 academic years
Land and Property Management	Feb, Jul or Nov	\$29,700 per year	4 academic years
Landscape Architecture*	Feb or Jul	\$33,600 per year	4 academic years
Landscape Architecture (Graduate Entry)*	Feb (2 academic years) Jul (2.5 academic years)	\$42,000 per year	2 - 2.5 academic years
Science – Brewing and Fermentation / Conservation & Ecology / Environmental Science / Food Science*	Feb or Jul	\$33,000 per year	3 academic years
Sport and Recreation Management	Feb, Jul or Nov	\$29,700 per year	3 academic years
Tourism Management*	Feb, Jul or Nov	\$29,700 per year	3 academic years
Viticulture and Oenology*	Feb or Jul	\$33,000 per year	3 academic years



## Graduate Certificate

Qualifications	Intakes	Tuition (NZ\$)	Length
Applied Science	Feb or Jul	\$16,500	1 semester
Commerce / Tourism Management / Recreation Management / Business & Sustainability / Resource Studies	Feb or Jul	\$14,850	1 semester

## Graduate Diploma

Qualifications	Intakes	Tuition (NZ\$)	Length
Applied Science	Feb or Jul	\$33,000	1 academic year
Viticulture and Oenology	Feb	\$33,000	1 academic year
Brewing and Fermentation	Feb or Jul	\$33,000	1 academic year
Commerce / Tourism Management / Recreation Management / Valuation / Property Management / Business & Sustainability / Resource Studies	Feb or Jul	\$29,700	1 academic year

## Postgraduate Certificate

Qualifications	Intakes	Tuition (NZ\$)	Length
Applied Science	Feb or Jul	\$16,066	1 semester
Commerce / Environmental Management / Land and Society / Parks, Recreation and Tourism	Feb or Jul	\$14,933	1 semester

## Postgraduate Diploma

Qualifications	Intakes	Tuition (NZ\$)	Length
Applied Science / Agricultural Science / Horticultural Science / Water Resource Management	Feb or Jul	\$32,133	1 academic year
Commerce / International Rural Development / Land & Society / Parks, Recreation & Tourism / Environmental Management	Feb or Jul	\$29,866	1 academic year

## Taught Master (180 credits)

Qualifications	Intakes	Total Tuition (NZ\$)	Length
Applied Computing	Feb or Jul (18 months) Nov (12 months)	\$48,200	12 - 18 months
Business (Finance)	Feb or Jul (18 months) Nov (12 months)	\$44,800	12 - 18 months
Business (Global Management & Marketing)	Feb or Jul (18 months) Nov (12 months)	\$44,800	12 - 18 months
Environmental Policy & Management	Feb or July	\$48,200	18 months
Fintech and Investment Management	Feb or Jul (18 months) Nov (12 months)	\$44,800	12 - 18 months
Management in Agribusiness	Feb or Jul	\$44,800	18 months
Management in Agricultural Systems	Feb	\$44,800	18 months
Pest Management	Feb	\$48,200	18 months
Professional Accounting (CPA)	Feb or Jul	\$44,800	18 months
Science in Food Innovation	Feb or Jul	\$48,200	12 months
Sport and Recreation Management	Feb or Jul (18 months) Nov (12 months)	\$44,800	12 - 18 months
Tourism Management	Feb or Jul (18 months) Nov (12 months)	\$44,800	12 - 18 months
Wine & Viticulture	Feb	\$48,200	12 - 18 months

## Taught Master (240 credits)

Qualifications	Intakes	Tuition (NZ\$)	Length
Planning	Feb or Jul	\$28,800 per year	24 months
Landscape Architecture	Feb	\$34,200 per year	24 months

## Research Master (240 credits)

Qualifications	Intakes	Tuition (NZ\$)	Length
Commerce & Management	Feb or Jul	\$29,700 per year	2 academic years
Commerce (Agricultural)	Feb or Jul	\$35,500 per year	2 academic years
Agricultural Science	Feb or Jul	\$35,500 per year	2 academic years
Applied Science	Feb or Jul	\$35,500 per year	2 academic years
Horticultural Science	Feb or Jul	\$35,500 per year	2 academic years
Landscape Architecture	Feb or Jul	\$35,500 per year	2 academic years
Science	Feb or Jul	\$35,500 per year	2 academic years
Water Resource Management	Feb or Jul	\$40,000 per year	2 academic years

## “Twinning” Research Master

International Nature Conservation	Feb or Jul	\$35,500 per year	2 academic years
Natural Resources Management and Ecological Engineering	Feb or Jul	\$35,500 per year	2 academic years

## PhD

Qualifications	Intakes	Tuition (NZ\$)	Length
All areas above	Monthly intakes	\$7,650 per year	3 years

## Study Abroad

Qualifications	Intakes	Tuition (NZ\$)	Length
1 semester (60 credits)	Feb or Jul	\$12,700	1 semester
2 semesters (120 credits)	Feb or Jul	\$25,400	2 semesters

\*compulsory practical work required to complete qualification

### Student Services Fee

Semester 1, 2 or Full Summer school (30 credits or more)	\$425.00 per semester
Semester 1, 2 or Full Summer School (less than 30 credits)	\$210.00 per semester
November or January Summer School only	\$125.00
Research (full year)	\$850.00
Off-Campus (30 credits or more)	\$270.00 per year
Off-Campus (less than 30 credits)	\$135.00 per year
English language	\$17.50 per week
Off Campus English language	\$10.00 per week

### Other Fees

Medical insurance	\$348.50 per semester \$697 per annum
-------------------	--

### Semester Dates

November intake: 15 November 2021 – 15 February 2022 (Summer School)  
 February intake: 21 February 2022 – 23 June 2022 (Semester One)  
 July intake: 18 July 2022 – 10 November 2022 (Semester Two)  
 November intake: 14 November 2022 – early February 2023 (Summer School)

### Remote Learning

Remote learning options are available for some programmes. Please contact us to find out more.

### Goods and Services Tax (GST)

GST is charged at 15% on goods and services in New Zealand, which includes study fees. However, it is not charged to a non-resident who is outside New Zealand at the time the services are delivered. Please visit [www.lincoln.ac.nz/study/fees/](http://www.lincoln.ac.nz/study/fees/) for more information.





# Scholarships

Lincoln University scholarships for international students are awarded based on academic ability. These scholarships will provide a contribution towards tuition fees and are usually awarded for the first year of study.

## English for Further Study Award

Any student who successfully completes a minimum of 12 weeks of English for Academic Purposes (EAP) will receive a fees rebate award when they enrol in the next academic programme.

## Lincoln University International Pathway Merit Scholarship

Scholarships valued at NZ\$2,500 are available for new students seeking admission into the Certificate in University Studies or Diploma in University Studies programmes. To be eligible for a scholarship, students need to meet academic and English requirements.

Application deadline:

31 January for Semester 1 intake  
30 June for Semester 2 intake  
31 October for Summer School Semester intake

## Lincoln University International Undergraduate Vice-Chancellor's Scholarship

Scholarships valued at NZ\$5,000 are available for new students who are studying Bachelor's degree programmes. To be eligible for a scholarship, students must meet academic and English requirements.

Application deadline:

31 January for Semester 1 intake  
30 June for Semester 2 intake  
31 October for Summer School Semester intake

## Lincoln University International Undergraduate Scholarship

Scholarships valued at NZ\$3,000 are available for new students who are studying undergraduate programmes. To be eligible for a scholarship, students must meet academic and English requirements.

Application deadline:

31 January for Semester 1 intake  
30 June for Semester 2 intake  
31 October for Summer School Semester intake

## Lincoln University International School Leaver's Scholarship

Scholarships valued at NZ\$10,000 are available for new students who are studying Bachelor's degree programmes. To be eligible for a scholarship, students must meet academic and English requirements.

Application deadline:

31 January for Semester 1 intake  
30 June for Semester 2 intake  
31 October for Summer School Semester intake

## International Taught Master Merit Scholarships

Qualifying international students will be awarded with a scholarship of NZ\$7,000 - NZ\$10,000 towards the overall cost of their study in one of the 180 credit taught master's programmes. Students must have a GPA of at least B+ average in the last year of their bachelor's degree to meet requirements. No separate application is required. Lincoln will assess and offer the scholarship automatically to qualifying international students.

### NZ\$10,000 – apply to the following programmes:

- Master of Business (Global Management and Marketing)
- Master of Business (Finance)
- Master of Professional Accounting (CPA)
- Master of Sport and Recreation Management
- Master of Tourism Management
- Master of Management in Agribusiness
- Master of Management in Agricultural Systems
- Master of Fintech and Investment Management

### NZ\$7,000 – apply to the following programmes:

- Master of Applied Computing
- Master of Environmental Policy & Management
- Master of Pest Management
- Master of Science in Food Innovation
- Master of Wine and Viticulture





# How to apply



# Prepare

Ready. Set. Grow.  
Apply to Lincoln University following these easy steps:

1

#### Decide what to study.

See from pages 30–35 to discover which qualification is right for you or visit [www.lincoln.ac.nz/Apply](http://www.lincoln.ac.nz/Apply) to find out more.

OR

Visit [www.lincoln.ac.nz](http://www.lincoln.ac.nz) for information about:

- Qualification finder
- Entry requirements
- Course advice

2

#### Prepare personal information.

To make your application easier, you will need to have the following documents:

- Transcripts (Academic Results)
- IELTS (International English Language Testing System) results if required
- One valid form of identification: passport or birth certificate
- Resume if required (Postgraduate)
- Email address
- Statement of research interest if required (Postgraduate)

We will contact you via email, so check your inbox and spam/junk folder regularly and if you have a Gmail account, check your promotions folder.

3

#### Set up your online account.

- Go to MyLinc at [mylinc.ac.nz](http://mylinc.ac.nz)
- Select 'Create Account'
- Fill in required fields
- Check your inbox for a verification email and click the link to verify your account. Now you are able to login into your new MyLinc account using your email address and password.

\*Remember your email and password for your account as you will need them in order to use MyLinc to apply and check the progress of your application.

Once you have logged into your account follow the steps provided to apply for your chosen programme.

1

**Choose your programme and semester you would like to commence study.**

2

**Fill in your previous education details.**

3

**Fill in your language details and upload proof of your English language tests if required.**

#### Prepare personal information.

- Proof of identification
- Academic transcript

4

Hints & Tips:

- Make sure all of your document file names are in English and only contain letters and numbers
- Don't upload files that are bigger than 250MB
- Ensure you have uploaded the required documents in all of the compulsory document fields identified with a \*

5

#### Additional information.

- Please feel free to add any additional information (this is optional)

For example: the supervisor you have been in contact with if you wish to study a PhD.

6

#### Declaration and submission.

- Once you have read the declaration, tick the box and submit.

7

#### Access your dashboard.

- You can now access your Dashboard, where you are able to track the progress of your application
- Your dashboard is where you can also:
  - Apply for accommodation
  - Pay your accommodation deposit
  - Update your details (email, password or postal address)
  - View your completed applications
- Make sure you monitor your emails because we will contact you about your application via email

8

#### Accept your offer.

- You will receive an offer of admission by email
- Please log into MyLinc to accept your offer
- Once you accept your offer you will be sent login details for LUCAS, our student management system, where you are able to select your courses and enrol

# Apply



# Enrol



## Helpful Tip:

LUCAS is our student management system where you can see available courses for your programme of study and you are able to enrol in your courses for each semester of study. You will find a link to LUCAS on your Mylinc Dashboard.

**1**

**After Oct 1st each year you are able to enrol in your courses (page 32–35) for the first semester of the following year. You must enrol in your courses each semester.**

**2**

**Follow the 'To Do List' and complete all of the steps to complete your enrolment.**

- Finish adding information
- Check your programme
- Enrol in the compulsory courses and electives
- Pay your fees

**3**

**Once payment is confirmed you will officially be enrolled and be able to get your Lincoln University Student I.D. card.**



For more information or help in applying, email [mylinc@lincoln.ac.nz](mailto:mylinc@lincoln.ac.nz) or visit [www.lincoln.ac.nz/Apply/Student-Help/](http://www.lincoln.ac.nz/Apply/Student-Help/)

# Apply





# Terminology

## Block

Each course is assigned to a timetable block. Each block is then allotted certain hours in the week, during which lectures will take place.

## Course

Each qualification consists of a number of courses, which are set out in the regulations for the qualification. A course is a module of work for which a grade is given that appears on the student's transcript.

## Credits

The number of credits allocated to a course is a measure of the size of the course, eg. 120 credits equals one full-time year.

## Elective

An elective is a course that is not part of the core of a programme, but which is available to students enrolled in that programme.

## Enrolment

The process where students notify the university of their intention to study by providing detailed information and enrolling in (selecting) courses.

## Faculty

A group of staff members who conduct or assist with teaching and research in a particular field. Faculties also group departments and research centres together. The head of the faculty is the Dean.

## Laboratory

Many courses have laboratory requirements. These are usually practical sessions related to lecture material.

## Lecture

The main method of teaching at university. These are classes held at prescribed times for each course. The university timetable outlines when each lecture is held for each course.

## Level

Courses are taught at different levels that reflect the difficulty and the degree of advancement of the course. For example, 100-level courses are generally taken in the first year of a Bachelor's degree; 600-level courses are usually taken at Master's degree level.

## Major

An area of study in which you specialise by taking a group of subjects including advanced level subjects.

## Orientation

A programme of events at the start of the semester to introduce new students to university life. The first week of lectures is often known as O Week (Orientation Week).

## Postgraduate

Further study usually undertaken by students who have completed an appropriate Bachelor's degree.

## Practical Work

Some programme regulations require a specified period of related practical work to be completed before the student may graduate or be awarded their certificate or diploma. This is work undertaken in a workplace with criteria that must be met in order to achieve the qualification.

## Prerequisite

In some cases, students may not enrol in an advanced course unless they have satisfactorily completed a lower level course in the same field. In this case, the required lower level course is called a prerequisite. A course is only listed as a prerequisite for an advanced course if students could not reasonably be expected to handle the advanced course without having the prerequisite.

## Qualification

Each qualification consists of a number of courses which are set out in the regulations for the qualification.

## Recommended preparation (prep)

When one course is thought to be important, but not absolutely essential, as preparation for an advanced course, the course will be listed as recommended preparation for the advanced course. Students are advised to have taken the recommended preparation before enrolling in the advanced course. They are not, however, required to have taken the recommended preparation.

## Restriction

Students may not receive credit for two courses that have a substantial amount of material in common. If there are two courses in the same schedule that have a substantial amount of common material, then there will be a restriction between them. In that case, you may not credit both to the degree or diploma.

## Semester

The academic year is divided into two halves called semesters. The word 'semester' derives from the Latin words 'for six and month'.

## Subject

The components or modules of a course. A subject is a module of work for which a grade is given that appears on the student's transcript.

## Timetable

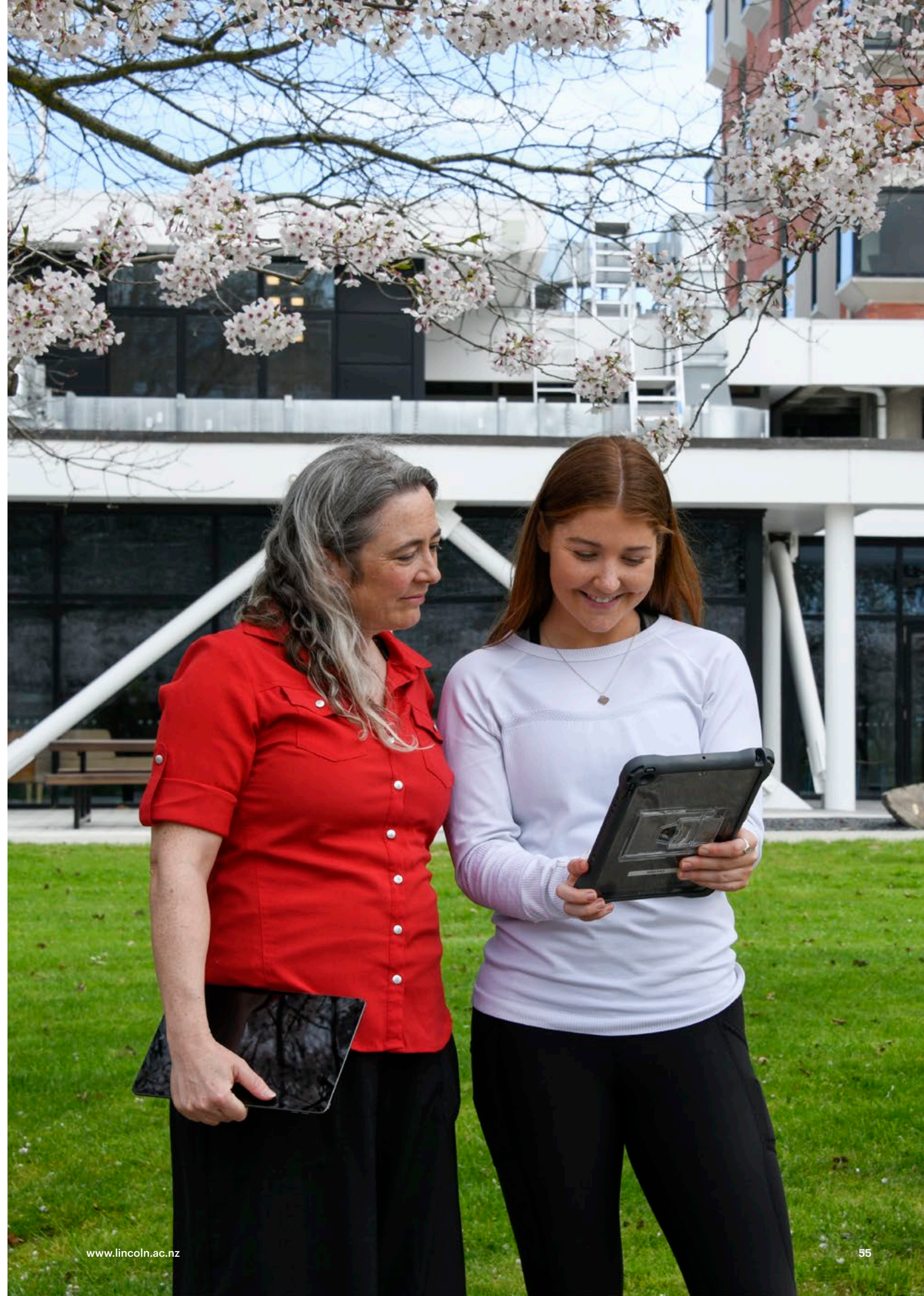
A daily programme of the time and place where subjects are taught. All students receive a copy of their course timetable at registration.

## Tutorial

A small group teaching session where academic issues and problems of a subject are discussed with a tutor.

## Undergraduate

An undergraduate is a university student studying for a Bachelor's degree or a certificate or diploma that did not require a previous degree for admission.





# Contacts

## Lincoln University Te Waihora Campus

Ellesmere Junction Road/Springs Road  
PO Box 85084  
Lincoln 7647  
Canterbury, New Zealand

P: 0800 10 60 10 (NZ)  
P: +64 3 423 0000 (INT)  
E: [grow@lincoln.ac.nz](mailto:grow@lincoln.ac.nz)

## International Team

The International Office promotes and markets Lincoln University to prospective international students and works with its global network of education agents to provide high quality customer service. We also support students with programme and course advice and help students through the University's applications and enrolment processes.



## Key dates

For key date information head to  
[www.lincoln.ac.nz/key-dates](http://www.lincoln.ac.nz/key-dates)



**Roger Shew**  
**International Director**  
E: [roger.shew@lincoln.ac.nz](mailto:roger.shew@lincoln.ac.nz)  
P: +64 3 423 0015



**Julian Becker**  
**International Manager**  
Regions: North & South America,  
Europe, Middle East, Africa  
E: [julian.becker@lincoln.ac.nz](mailto:julian.becker@lincoln.ac.nz)  
P: +64 3 423 0006



**Annie Goh**  
**International Manager**  
Regions: Southeast Asia, India  
and Sub-continent, Pacific  
E: [annie.goh@lincoln.ac.nz](mailto:annie.goh@lincoln.ac.nz)  
P: +64 3 423 0034



**Sheetal Sharma**  
**International Recruitment Officer**  
E: [sheetal@lincoln.ac.nz](mailto:sheetal@lincoln.ac.nz)  
P: +64 3 423 0023



**Patrick Yeung**  
**International Operations Manager**  
Regions: New Zealand, Japan, Korea,  
Hong Kong, Taiwan, Russia  
E: [patrick.yeung@lincoln.ac.nz](mailto:patrick.yeung@lincoln.ac.nz)  
P: +64 3 423 0018



**Jeff Sun**  
**Director of Greater China**  
E: [jeff.sun@lincoln.ac.nz](mailto:jeff.sun@lincoln.ac.nz)  
P: +64 3 423 0041

**Disclaimer** Every effort is made to ensure that information in this publication is correct at the time of printing, but the content may be subject to change. Lincoln University reserves the right to make changes, amendments or deletions – including the withdrawal of courses – should circumstances change. Lincoln University does not assume, and hereby disclaims, any express or implied liability whatsoever to any party for any loss or damage caused by errors or omissions, whether these errors or omissions result from negligence, accident or any other cause. February 2022.







**LINCOLN**  
**UNIVERSITY**  
TE WHARE WĀNAKA O AORAKI